

# Stylishly Contemporary



Elegant and modern bathrooms



# Introduction

## Britton — Form & Function.

Britton Bathrooms offers comprehensive, modular ranges of beautifully designed contemporary bathroom products. All of the ranges presented here were designed by international designer Tim Powell, arguably one of the most experienced bathroom product designers around. Tim’s intimate knowledge ensures both form and function is built into every product, with the very best in engineering and performance.



See page 02



See page 52



See page 62



See page 114



See page 151

# Contents

## CERAMICS

There are four beautiful ceramic ranges; Fine, Curve, Cube and Compact. All offer comprehensive ranges of models to suit your needs including the option of Tall height washbasins and WCs making your bathroom space more comfortable.

Pages 02-51



Ceramics Overview	02-07
Fine	08-19
Cube	20-31
Curve	32-43
Compact	44-51

## TAPS & ACCESSORIES

The two brassware ranges, Crystal and Sapphire, offer every option from basin mixers through to bath shower mixers, ensuring a seamless look across your entire bathroom. The new thermostatic shower valves, paired with fantastic new shower heads, introduce safe and controllable showering for you and your family.

Pages 52-61



Taps	52-55
Baskets & Wastes	56-57
Accessories	58-59
Towel Rails	60-61

## FURNITURE

The Britton Aqua-Cabinets furniture ranges are designed specifically for bathroom use. From free-standing options to fitted furniture, both available with seamless basin options and all packed with useful features, they provide a great storage space for today’s bathroom necessities.

Pages 62-113



Furniture Overview	62-69
Compact	70-75
Gullwing & Arc	76-81
D45	82-91
D30 Fitted	92-103
Mix & Match	104-107
Cloakrooms	108-113

## BATHS

The Britton Cleargreen baths bring superb design and a wide choice of size and model configurations to meet your needs. From standard baths, to specially shaped shower baths and even free-standing baths, each manufactured from 30% recycled material.

Pages 114-150



Baths Overview	114-115
Freestanding Baths	116-127
Single Ended Baths	128-131
Double Ended Baths	132-137
Off-Set Baths	138-139
Bath Shower Screens	140-141
Showering Baths	142-150

## SHOWER TRAYS & VALVES

With the widest range of shapes and sizes available, combined with their rigid construction with metal re-inforcing, plus a low 35mm high step in, Zamori shower trays are the perfect choice for the modern bathroom.

Pages 151-159



Thermostatic Showering	151
Shower Tray Overview	152-153
Shower Trays	154-159



# Ceramics

Britton ceramic ranges include the exquisite Fine range with ultra sleek edges, Curve with sweeping corners, Cube with geometric and angular shapes and the Compact, a new range designed with short projection especially for bathrooms with limited space. Every basin design is interchangeable onto various pedestal options. From the sleek, round-fronted full or semi pedestal options, to the geometric square-fronted full or semi pedestal options, you can tailor make your own bathroom design to suit your individual tastes. Why not select our stunning and dramatic pedestal option in stainless steel, both as full or semi pedestal sizes, in a rounded style, for an eye-catching appearance? The Tall pedestal and Tall WC options make the bathroom a more comfortable environment for taller users and the elderly. All our stylish ranges include various basin, WC and bidet options for a consistently beautiful bathroom.



# The Ceramic Range

*Stunning Ceramic design to suit your individual tastes*

Britton’s design of each core ceramic range is governed largely by the washbasin style. From Fine with its delicate rim, Curve with subtle sweeping edges, Cube with geometric angles or the new Compact range with generous depth and short projection.



**FINE**

The Fine range of basins, WCs and bidets are exquisitely crafted to form ultra slim edges to each of the ceramic pieces. These products are to be firm favourites, creating a unique designer feel to the contemporary bathroom space.

*Pages 8-19*



**CURVE**

Spacious with soft, subtle lines, the Curve range gives a simplistic aesthetic to the modern day bathroom for those who prefer sweeping edges and a minimal appearance.

*Pages 32-43*



**CUBE**

The Cube collection is a distinctive and stylishly designed range with geometric shapes and subtle angular edges, which work beautifully within a contemporary styled bathroom.

*Pages 20-31*



**COMPACT**

The gorgeous new compact range for Britton features stunning ceramic pieces designed with a shorter projection to maximise the use of space in your bathroom.

*Pages 44-51*





# The Tall option

As Britton ceramics are designed to be completely modular, you have the option to pair the round fronted Tall pedestal design with any basin style. It has been designed to be completely modular across Fine, Cube, Curve and the new Compact ranges. Similarly, WC back-to-wall or close-coupled pans also feature as a Tall option. These have been designed specifically to ensure your bathroom is beautiful, functional and easy to use. Tall pedestals and WC pans are 6cm higher than the standard option making your bathroom easier for both taller people and the elderly. The pedestals help to reduce back pain when arching over to wash your hands whilst the WC pans help to keep knee angles at approximately 90 degrees providing more comfort in use. They also offer an easier solution to getting off the toilet for those less able.



**Tall Pedestal**  
Curve 60cm basin shown with a Tall pedestal

**Standard Pedestal**  
Curve 60cm basin shown with a standard pedestal



**Tall Close Coupled WC**  
Curve Tall close coupled WC with cistern with lid with Carbamide soft-close seat

**Standard Close Coupled WC**  
Curve close coupled WC with cistern with lid with Carbamide soft-close seat

# Fine

**nanoGLAZE**  
ceramic that stays cleaner

*A cleaner toilet, by design and with NANO Glaze*

We believe that the toilet bowl should still remain as clean as possible, even with reduced flushing water and we therefore engineer our toilet bowls to maintain the correct water area as previous British Standards and by coating the toilet bowl with NANO Glaze to make them exceptionally easy to keep clean.

Close-coupled back-to-wall WC with one piece cistern  
Also available as back-to-wall or wall-hung options.



Back-to-wall bidet  
Also available as wall-hung.



The Fine range of basins, WCs and bidets are exquisitely crafted to form ultra slim edges to each of the ceramic pieces. These products continue to be firm favourites, creating a unique designer feel to the contemporary bathroom space. A widely anticipated addition to the range is the new semi-recessed Fine basin, which can be elegantly set into counter-tops or as part of our Aqua-Cabinets furniture range.

50cm Washbasin  
Available with full or semi pedestal options in square or round designs in ceramic or stainless steel.



## BASIN OPTIONS ↓

The Fine washbasin is also available as a 60cm and can be wall-hung with a bottle trap or mounted on a work-top. A new Fine 55cm semi-recessed basin is also available.







The Fine basin features a beautifully and uniquely minimal edge, which looks superior when paired with a full pedestal in either a round or square fronted design. The height and stance works perfectly with close-coupled WCs, available with cisterns with lids, or as a single piece of ceramic. The back-to-wall options allow you to hide all the plumbing for the neatest look.

#### PEDESTAL OPTIONS ↓

All Fine basins can be mounted on Cube square full and semi pedestals, allowing the freedom to create the perfect look



*This page:* Fine back-to-wall bidet with Crystal bidet mixer, Fine back-to-wall WC with Carbamide soft-close seat with concealed cistern and flush plate and toilet roll holder. *Opposite:* Fine 60cm basin and square full pedestal with Crystal basin mixer and click-clack waste. Fine close-coupled back-to-wall WC with cistern with lid and Carbamide soft-close seat and soap dispenser.

See page 16 for technical details on the Fine basin and page 18 for technical details on the Fine WC range.

**SEMI-RECESSED BASIN***Design a bathroom to suit your specific needs*

A widely anticipated addition to the Fine range, a stunning semi-recessed basin with a 55cm width allows you to tailor your bathroom to suit your own individual tastes. Set into counter-tops, or pair with our stunning furniture range by Aqua-Cabinets.

*See page 16 for technical details on the Fine basin.*



*This page:* Fine 55cm semi-recessed basin with Crystal basin mixer and click-clack waste.

*Opposite page:* Fine wall-hung WC with Carbamide soft-close seat, concealed cistern and flush plate, toilet roll holder and Fine wall-hung bidet with Crystal bidet mixer.





*This page:* Fine 50cm basin with round fronted semi pedestal each with Crystal basin mixer each and click-clack waste each. *Opposite:* Fine 60cm basin and square full pedestal with Crystal basin mixer and click-clack waste. Fine wall-hung WC with Carbamide soft-close seat with concealed cistern and flush plate, toilet roll holder and Fine wall-hung bidet with Crystal bidet mixer.

See page 16 for technical details on the Fine basin.



#### COUNTER-TOP BASIN OPTION → *Design a bathroom to suit your specific needs*

View our full range of basins online at  
[www.brittonbathrooms.com](http://www.brittonbathrooms.com)

To make the most out of your beautiful bathroom, utilise the stunning Fine 50cm basin on a countertop as a vanity option. This creates the illusion of space with a floating appearance. Fine 50cm basin with Crystal basin mixer and click-clack waste.



Basins - Fine



FINE 50 & 60CM BASINS WITH SQUARE FRONTED PEDESTAL

50cm basin	40.1974
60cm basin	40.1973
Square fronted Pedestal	(C) FP.1978

FINE 50 & 60CM BASINS WITH SEMI PEDESTALS

50cm basin	40.1974
60cm basin	40.1973
Round fronted semi pedestal	(D) SP.1033
Square fronted semi pedestal	(E) SP.1979

The 50cm and 60cm basins in this section can be used with either the round fronted or the square fronted semi pedestals

FINE 55CM SEMI-RECESSED BASIN

55cm semi-recessed basin	(F) 40.6610
--------------------------	-------------

The 55cm semi-recessed basin is 45cm deep



All our semi pedestals come complete with a fixing set



On all sanitaryware  
See website for details

FINE 50 & 60CM BASINS WITH STANDARD AND TALL PEDESTALS

50cm basin	40.1974
60cm basin	40.1973
Tall Pedestal	(A) FP.1977
Standard Pedestal	(B) FP.1032

The 50cm and 60cm basins on this page can be used with either the Standard or the Tall pedestal  
The 50cm basin is 40cm deep; the 60cm basin is 45cm deep



WCs & Bidets - Fine

All Britton Cistern fittings are WRAS approved



FINE STANDARD HEIGHT WCs

Type	Model	As Shown	Width	Depth	Overall Height	Pan Height	Pan Code	Cistern Code
Close Coupled WC	With One-Piece cistern	(B)	36cm	65cm	85cm	42cm	40.1968	CC.1034
Close Coupled WC	With Angled lid cistern	(E)	36cm	65cm	85cm	42cm	40.1968	CC.1980
Close Coupled WC	With Standard lid cistern	(F)	36cm	65cm	85cm	42cm	40.1968	CC.1036
Back to wall WC	With concealed cistern tank with top/front access and dual flush button	(D)	36cm	52cm	42cm	42cm	40.1971	W31A
Wall Hung WC	With concealed cistern tank with top/front access and rectangular dual flush plate	(G)	36cm	52cm	variable	36cm	40.1969	W32A

\* Complete WC price is for a complete WC as described. Price excludes seat.  
\*\* Concealed cistern must be ordered as a separate item to the WC pan. Price excludes seat.

Please note that both the flush plate & push button cistern can be used with the back to wall and wall hung WCs.

SEATS

Colour	Material	Standard Seat	Soft Close Seat	Angled Soft Close Seat
		Code	Code	Code
White	Carbamide	PP.1943	SS.1026	SS.1027

BIDETS

Model	Ceramic	Width	As Shown	Depth	Bidet Height	Overall Height	Code
Floor Standing	-	36cm	(H)	52cm	42cm	42cm	40.1972
Wall hung	-	36cm	(I)	52cm	33cm	42cm	40.1970



All Britton WC fittings are factory set at 3L and 6L flush. They can be adjusted on site to flush at 2½L and 4½L.

FINE TALL HEIGHT WCs

Model	Ceramic	As Shown	Width	Depth	Overall Height	Pan Height	Pan Code	Cistern Code
Close Coupled WC	With One-Piece cistern	(A)	36cm	65cm	91cm	48cm	48.1959	CC.1034
Close Coupled WC	With Angled lid cistern		36cm	65cm	91cm	48cm	48.1959	CC.1980
Close Coupled WC	With Standard lid cistern		36cm	65cm	91cm	48cm	48.1959	CC.1036
Back to wall WC	With concealed cistern tank with top/front access and dual flush button	(C)	36cm	52cm	48cm	48cm	48.1963	W31A
Back to wall WC	With concealed cistern tank with top/front access and rectangular dual flush plate	(C)	36cm	52cm	48cm	48cm	48.1963	W32A

\* Complete WC price is for a complete WC as described. Price excludes seat. Fine Tall WCs use Curve Tall pans.  
\*\* Concealed cistern must be ordered as a separate item to the WC pan. Price excludes seat.

Please note that both the flush plate & push button cistern can be used with the back to wall and wall hung WCs.



On all sanitaryware  
See website for details





# Cube

Cube 50cm basin with square full ceramic pedestal and Crystal basin mixer without waste and click-clack basin waste.

See page 28 for technical details on the Cube basin.

**nanoGLAZE**  
ceramic that stays cleaner

*A cleaner toilet, by design and with NANO Glaze*

We believe that the toilet bowl should still remain as clean as possible, even with reduced flushing water and we therefore engineer our toilet bowls to maintain the correct water area as previous British Standards and by coating the toilet bowl with NANO Glaze to make them exceptionally easy to keep clean.

**Close-coupled back-to-wall WC**  
Also available as back-to-wall or wall-hung options.



**Back-to-wall bidet**  
Also available as wall-hung.



The Cube collection is a distinctive and stylishly designed range with geometric shapes and subtle angular edges, which work beautifully within a contemporary styled bathroom. Basins available with either full or semi pedestal options in both square and round styles or pair with a stainless steel option for an ultra modern and sleek look. Choose matching WCs and bidets to complete the look.

**50cm washbasin**  
Available with full or semi pedestal options in square or round designs in ceramic or stainless steel.



## BASIN OPTIONS ↓

The Cube washbasin is also available as a 60cm option or a 55cm semi-recessed for use within our stylish furniture pieces by Aqua-Cabinets or as a counter-top basin







Cube 50cm basins with round semi pedestal each, Crystal basin mixers without pop-up waste each and click-clack basin waste each. 60cm white mirrored double door cabinets each and 170cm x 70cm Sustain bath.

See page 28 for technical details on the Cube basin.



A perfect solution for modern bathrooms with limited space. The Britton Cube wall-hung range gives a seamless and unified look throughout your bathroom, whilst creating un-interrupted clean lines between walls and floors.

#### PEDESTAL OPTIONS ↓

All Cube basins can be mounted on Curve round full and semi pedestals, allowing the freedom to create the perfect look



Cube wall-hung bidet with Crystal bidet mixer with pop-up waste and Cube wall-hung WC with Carbamide soft-close seat and concealed cistern with flush plate. Cube 50cm basin with round semi-predestal, Crystal basin mixer and click-clack basin waste.



*This page:* Cube back-to-wall bidet with Crystal bidet mixer with pop-up waste. Cube back-to-wall WC with Carbamide soft-close seat and concealed cistern with flush plate. Cube 55cm semi-recessed basin with Crystal basin mixer without pop-up waste, Cube 60cm white semi-recessed basin unit, 30cm white drawer unit, and 90cm white worktop. 60cm white mirrored double door cabinet, 30cm white double shelf unit and stainless steel round towel ring.

*See page 30 for technical details on the Cube WC and Bidet range.*



This back-to-wall range provides a clean attractive look to your contemporary bathroom. Pair Cube sanitaryware with white fitted furniture for a crisp, clean bathroom with functional storage space. See p62 for more details on fitted furniture.



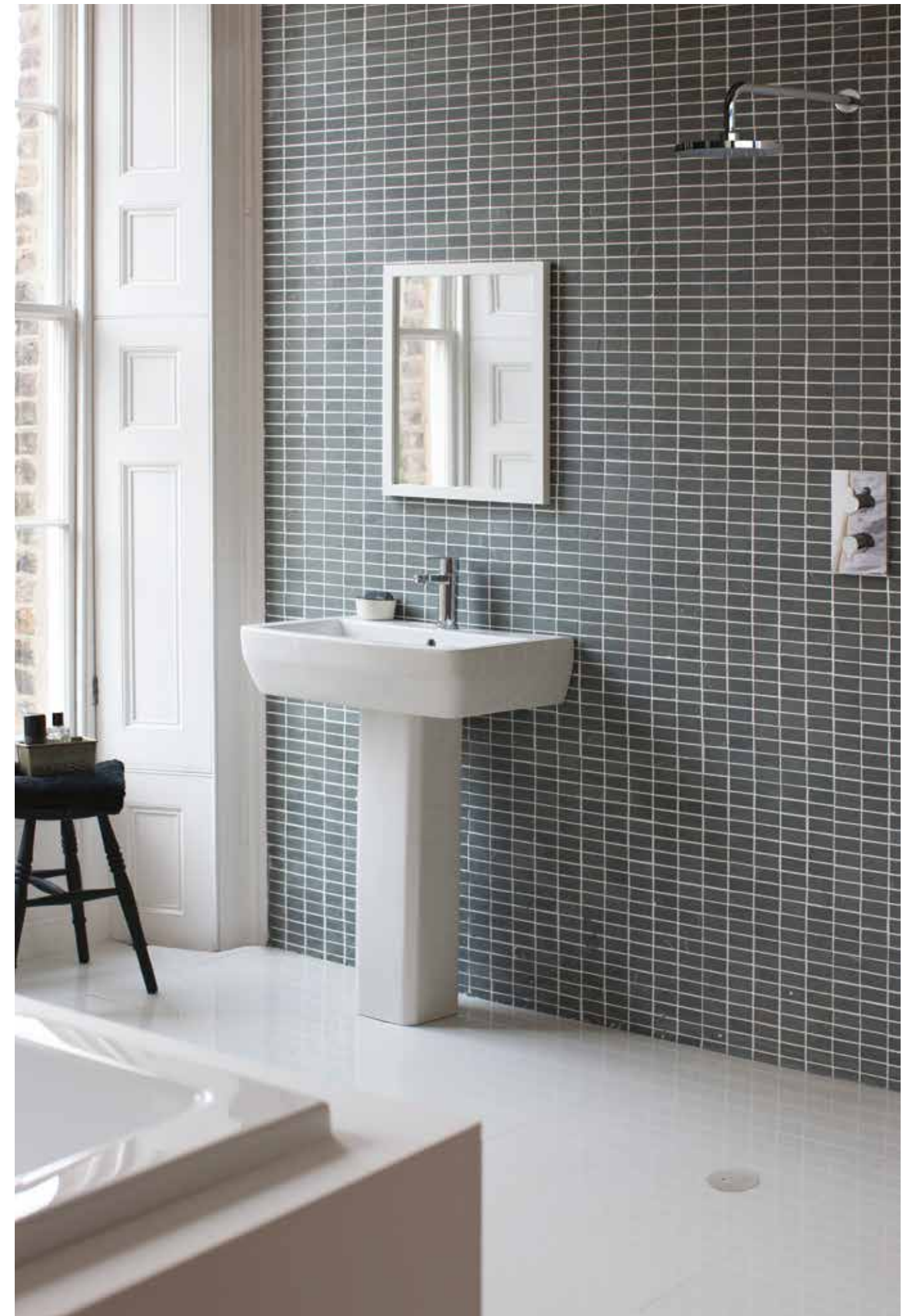


A conventional and eye-catching close-coupled range of Cube styled products suits any contemporary bathroom. Select the close-coupled WC with a unique one piece cistern for a sleek, unified ceramic look (see page 31). All Cube basins can also be paired with round fronted full and semi pedestals to suit your own individual tastes.

*This page and opposite:* Cube 60cm basin on square fronted full pedestal with Crystal basin mixer without waste and click-clack basin waste.

*Opposite page:* Sustain bath 170 x 70cm (just seen). Single outlet thermostatic shower valve including arm and rose.

*See page 28 for technical details on the Cube basin.*



Basins - Cube



CUBE 50 & 60CM BASINS WITH SQUARE FRONTED PEDESTAL

50cm basin	20.1956
60cm basin	20.1955
Square fronted Pedestal	(C) FP.1978
Towel rail	TR.1026

CUBE 50 & 60CM BASINS WITH SEMI PEDESTALS

50cm basin	20.1956
60cm basin	20.1955
Round fronted semi pedestal	(D) SP.1033
Square fronted semi pedestal	(E) SP.1979

The 50cm and 60cm basins in this section can be used with either the round fronted or the square fronted semi pedestals

CUBE 55CM SEMI-RECESSED BASIN

55cm semi-recessed basin	(F) 20.1954
--------------------------	-------------

The 55cm semi-recessed basin is 45cm deep



All our semi pedestals come complete with a fixing set



On all sanitaryware  
See website for details

CUBE 50 & 60CM BASINS WITH STANDARD AND TALL PEDESTALS

50cm basin	20.1956
60cm basin	20.1955
TALL Pedestal	(A) FP.1977
STANDARD Pedestal	(B) FP.1032

The 50cm and 60cm basins on this page can be used with either the Standard or the Tall pedestal  
The 50cm basin is 40cm deep; the 60cm basin is 45cm deep





WCs & Bidets - Cube

All Britton WC fittings are factory set at 3L and 6L flush. They can be adjusted on site to flush at 2½L and 4½L.



All Britton Cistern fittings are WRAS approved



CUBE STANDARD HEIGHT WCs

Type	Model	As Shown	Width	Depth	Overall Height	Pan Height	Pan Code	Cistern Code
Close Coupled WC	With One-Piece cistern	(A)	36cm	65cm	85cm	42cm	20.1949	CC.1034
Close Coupled WC	With Angled lid cistern	(B)	36cm	65cm	85cm	42cm	20.1949	CC.1980
Close Coupled WC	With Standard lid cistern	(C)	36cm	65cm	85cm	42cm	20.1949	CC.1036
Back to wall WC	With concealed cistern tank with top/front access and dual flush button	(D)	36cm	52cm	-	42cm	20.1952	W31A
Wall Hung WC	With concealed cistern tank with top/front access and rectangular dual flush plate	(E)	36cm	52cm	42cm	33cm	20.1950	W32A

\* Complete WC price is for a complete WC as described. Price excludes seat.  
\*\* Concealed cistern must be ordered as a separate item to the WC pan. Price excludes seat.

Please note that both the flush plate & push button cistern can be used with the back to wall and wall hung WCs.



SEATS

Colour	Material	Standard Seat	Soft Close Seat	Angled Soft Close Seat
		Code	Code	Code
White	Carbamide	-	SS.1025	-

BIDETS

Model	Ceramic	Width	As Shown	Depth	Bidet Height	Overall Height	Code
Floor Standing	-	36cm	(F)	52cm	42cm	42cm	20.1953
Wall hung	-	36cm		52cm	33cm	42cm	20.1951



On all sanitaryware  
See website for details

# Curve

## nanoGLAZE

*A cleaner toilet, by design and with NANO Glaze*

We believe that the toilet bowl should still remain as clean as possible, even with reduced flushing water and we therefore engineer our toilet bowls to maintain the correct water area as previous British Standards and by coating the toilet bowl with NANO Glaze to make them exceptionally easy to keep clean.

**Close-coupled back-to-wall WC**  
Also available as open-back, back-to-wall or wall-hung options.



**Back-to-wall bidet**  
Also available as wall-hung.



Spacious with soft, subtle lines, the Curve range gives a simplistic aesthetic to the modern day bathroom for those who prefer sweeping edges and a minimal appearance. A stunning new innovation to the range includes a stand-alone single piece basin and pedestal, with no breaks or joins, this piece of ceramic is sure to catch the eye and provide a centerpiece to your contemporary bathroom, *see page 36*.

**50cm Washbasin**  
Available with full or semi pedestal options in square or round designs in ceramic or stainless steel.



## BASIN OPTIONS ↓

The Curve washbasin is also available as a 60cm option, or a 55cm semi-recessed for use within our stylish furniture pieces by Aqua-Cabinets, or as a countertop basin.







This close-coupled set is both minimal and stylish, offering you simple installation. The subtle lines create a beautiful aesthetic but also provide great functionality with deep basins giving ample room to wash your hands.

*This page:* Curve 60cm basin with Crystal basin mixer without pop-up waste and click-clack waste. *Opposite:* Curve 60cm basin, full round pedestal and Crystal basin mixer without pop-up waste, Curve back-to-wall close-coupled WC with angled lid cistern and Carbamide soft-close seat, Curve back-to-wall bidet with Crystal bidet mixer with pop-up waste.

*See page 40 for technical details on the Curve basin and page 42 for technical details on the Curve WC range.*







The all in one curve basin is a striking piece for those wanting to make an impact in a modern bathroom. Pair with a Curve back to wall WC and Britton accessories to ensure this basin is the centrepiece of the bathroom.



Curve free-standing basin including white ceramic waste with Sapphire basin mixer without waste.

See page 40 for technical details on the Curve basin.



A smart option for smaller bathrooms, our wall-hung products give a great impression of space and hide all the plumbing. Pair wall-hung WCs and bidets with the beautiful Curve basin in either 50cm or 60cm sizes as vanity work-top basins, maximising space available and providing useful work surfaces.

#### PEDESTAL OPTIONS ↓

All Curve basins can be mounted on Cube round full and semi pedestals, allowing the freedom to create the perfect look



Curve 60cm basin, Sapphire basin mixer without pop-up waste and click-clack basin waste. Curve wall-hung WC with Carbamide soft-close seat and concealed cistern with flush plate, Curve wall-hung bidet with Crystal bidet mixer.

See page 40 for technical details on the Curve basin and page 42 for technical details on the Curve WC range.



Back-to-wall options continue to be a popular choice with those wishing to create an illusion of space within smaller bathrooms. Pair with wall-hung basins, basins set into fitted furniture or counter-tops to create functional storage options.



**THE FINISHING TOUCH →**  
*Sleek, modern Britton accessories*

View our full range of accessories on pages 56-61

Britton offers a selection of sleek accessories, which help transform your bathroom into a place of both form and function. Smooth ceramic is balanced with cool, crisp stainless steel from soap dispensers, brush and tumbler holders to towel rails for every size of Britton basin.



*Opposite page:* Curve back-to-wall bidet with Crystal bidet mixer, Curve back-to-wall WC with Carbamide angled soft-close seat.

*This page and opposite:* Curve 50cm basin with round semi-pedestal with Crystal basin mixer and click-clack basin waste.

*See page 40 for technical details on the Curve basin*

Basins & Pedestals - Curve



CURVE 50 & 60CM BASINS WITH SQUARE FRONTED PEDESTAL

50cm basin	30.1967
60cm basin	30.1966
Square fronted Pedestal	(C) FP.1978

CURVE FREESTANDING BASIN

58.3cm freestanding basin	(D) 30.1968
---------------------------	-------------

The freestanding basin is 42cm deep, 86cm tall and includes a click-clack waste

CURVE 50 & 60CM BASINS WITH SEMI PEDESTALS

50cm basin	30.1967
60cm basin	30.1966
Round fronted semi pedestal	(E) SP.1033
Square fronted semi pedestal	(F) SP.1979

The 50cm and 60cm basins in this section can be used with either the round fronted or the square fronted semi pedestals

CURVE 55CM SEMI-RECESSED BASIN

55cm semi-recessed basin	(G) 30.1965
--------------------------	-------------

The 55cm semi-recessed basin is 45cm deep



All our semi pedestals come complete with a fixing set



On all sanitaryware  
See website for details

CURVE 50 & 60CM BASINS WITH STANDARD AND TALL PEDESTALS

50cm basin	30.1967
60cm basin	30.1966
TALL Pedestal	(A) FP.1977
STANDARD Pedestal	(B) FP.1032

The 50cm and 60cm basins on this page can be used with either the Standard or the Tall pedestal  
The 50cm basin is 40cm deep; the 60cm basin is 45cm deep



WCs & Bidets - Curve

All Britton Cistern fittings are WRAS approved



CURVE STANDARD HEIGHT WCs

Type	Model	As Shown	Width	Depth	Overall Height	Pan Height	Pan Code	Cistern Code
Close Coupled (back to wall) WC	With One-Piece cistern	(A)	36cm	65cm	85cm	42cm	30.1957	CC.1034
Close Coupled (open back) WC	With One-Piece cistern		36cm	65cm	85cm	42cm	30.1958	CC.1034
Close Coupled (back to wall) WC	With Angled lid cistern	(B)	36cm	65cm	85cm	42cm	30.1957	CC.1980
Close Coupled (open back) WC	With Angled lid cistern		36cm	65cm	85cm	42cm	30.1958	CC.1980
Close Coupled (back to wall) WC	With Standard lid cistern	(C)	36cm	65cm	85cm	42cm	30.1957	CC.1036
Close Coupled (open back) WC	With Standard lid cistern	(D)	36cm	65cm	85cm	42cm	30.1958	CC.1036
Back to wall WC	With concealed cistern tank with top/front access and dual flush button	(E)	36cm	52cm	42cm	42cm	30.1962	W31A
Wall Hung WC	With concealed cistern tank with top/front access and rectangular dual flush plate	(F)	36cm	52cm	42cm	33cm	30.1960	W32A

\* Complete WC price is for a complete WC as described. Price excludes seat.  
\*\* Concealed cistern must be ordered as a seperate item to the WC pan. Price excludes seat.

Please note that both the flush plate & push button cistern can be used with the back to wall and wall hung WCs.



SEATS

Colour	Material	Standard Seat	Soft Close Seat	Angled Soft Close Seat
		Code	Code	Code
White	Carbamide	PP.1943	SS.1026	SS.1027

BIDETS

Model	Ceramic	Width	As Shown	Depth	Bidet Height	Overall Height	Code
Floor Standing	-	36cm	(G)	52cm	42cm	42cm	30.1964
Wall hung	-	36cm	(H)	52cm	33cm	42cm	30.1961



All Britton WC fittings are factory set at 3L and 6L flush. They can be adjusted on site to flush at 2½L and 4½L.

CURVE TALL HEIGHT WCs

Type	Model	As Shown	Width	Depth	Overall Height	Pan Height	Pan Code	Cistern Code
Close Coupled WC	With One-Piece cistern	(I)	36cm	65cm	91cm	48cm	48.1959	CC.1034
Close Coupled WC	With Angled lid cistern		36cm	65cm	91cm	48cm	48.1959	CC.1980
Close Coupled WC	With Standard lid cistern		36cm	65cm	91cm	48cm	48.1959	CC.1036
Back to wall WC	With concealed cistern tank with top/front access and dual flush button	(J)	36cm	52cm	48cm	48cm	48.1963	W31A
Back to wall WC	With concealed cistern tank with top/front access and rectangular dual flush plate	(J)	36cm	52cm	48cm	48cm	48.1963	W32A

\* Complete WC price is for a complete WC as described. Price excludes seat. Fine Tall WCs use Curve Tall pans.  
\*\* Concealed cistern must be ordered as a seperate item to the WC pan. Price excludes seat.

Please note that both the flush plate & push button cistern can be used with the back to wall and wall hung WCs.



On all sanitaryware  
See website for details





# Compact



**nanoGLAZE**  
ceramic that stays cleaner

*A cleaner toilet, by design and with NANO Glaze*

We believe that the toilet bowl should still remain as clean as possible, even with reduced flushing water and we therefore engineer our toilet bowls to maintain the correct water area as previous British Standards and by coating the toilet bowl with NANO Glaze to make them exceptionally easy to keep clean. This is of great benefit for WC pans with a shorter projection such as the Compact range, where the angle of the ceramic is steeper. NANO Glaze aids a cleaner toilet bowl.



**Close-coupled WC**  
Also available as wall-hung or back-to-wall options.



The gorgeous new compact range for Britton features stunning ceramic pieces designed with a shorter projection of 40cm to maximise the use of space in your bathroom. Available in 45cm, 55cm and 65cm widths.

**55cm washbasin**  
Available with both full or semi pedestal options.



## BASIN OPTIONS ↓

The Compact washbasin is also available as a 45cm option to suit smaller bathrooms.





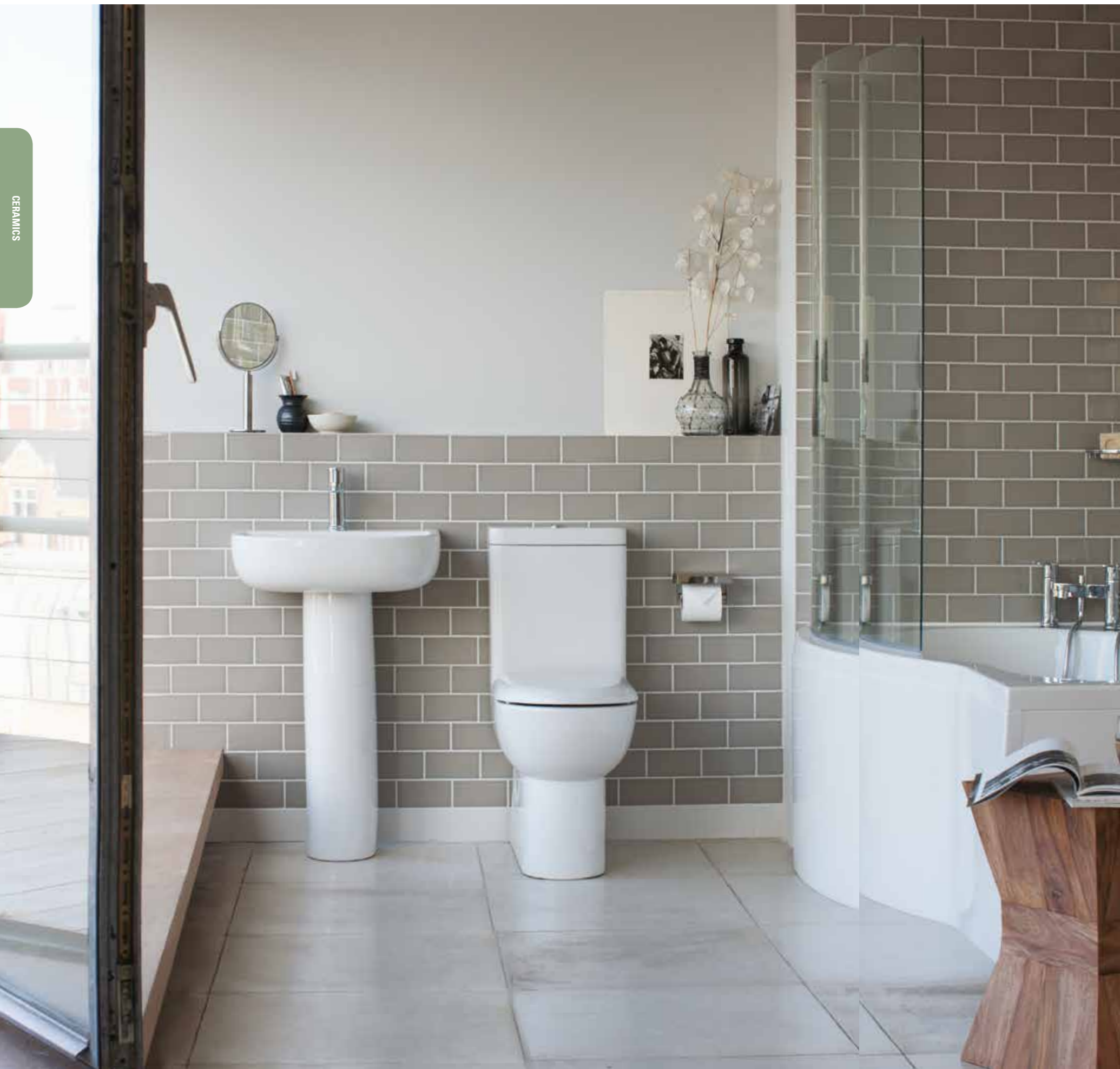
*This page:* Compact 45cm basin with round semi pedestal, Crystal basin mixer and click-clack basin waste. Compact wall-hung WC with Compact Carbamide soft-close seat. *Opposite:* Compact 65cm basin with round pedestal, Crystal basin mixer and click-clack basin waste. Ceramic soap dispenser. Compact back-to-wall WC with Compact Carbamide soft-close seat, toilet roll holder. Compact 45cm basin with round semi pedestal, Crystal basin mixer and click-clack basin waste.

*See page 51 for technical details on the Compact basin and page 50 for technical details on the Compact WC range.*



NEW





The close-coupled option in this new Compact range offers a stylish and ultra-modern solution to bathroom requirements where space is limited. To maximise space in your bathroom, choose a combination showering bath from the Cleargreen range which also are available in smaller sizes, at just 150cm.

*This page and opposite:* Compact 55cm basin with round full pedestal, Crystal basin mixer without pop-up waste and click-clack basin waste. Compact close-coupled WC with cistern and lid and Compact Carbamide soft-close seat, stainless steel toilet roll holder. Ecoround 150cm left-handed bath with front panel and end panel, click-clack bath waste, bath screen and Crystal bath shower mixer.

*See page 50-51 for technical details on the Compact basin and page 50 for technical details on the Compact WC range.*



WCs - Compact



All Britton WC fittings are factory set at 3L and 6L flush. They can be adjusted on site to flush at 2 1/2 L and 4 1/2 L.

COMPACT CLOSE COUPLED  
BACK TO WALL WC

Cistern with cistern lid	CM.0007
Standard pan	CM.0006
Soft close seat	SS.1028
Complete close coupled WC -	Image (C)

COMPACT WALL HUNG WC

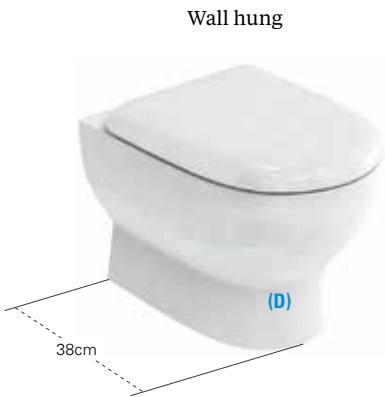
Wall hung pan	CM.0005
Concealed cistern tank with top/front access and dual flush button	W31A
Soft close seat	SS.1028
Complete cistern, pan & seat -	Image (D)

COMPACT BACK TO WALL WC

Back to wall pan	CM.0004
Concealed cistern tank with top/front access and rectangular dual flush plate	W32A
Soft close seat	SS.1028
Complete pan & seat -	Image (E)

\* Concealed cistern must be ordered as a separate item to the WC pan. Price excludes seat. Please note that both the flush plate & push button cistern can be used with the back to wall and wall hung WCs.

Please note that both the flush plate & push button cistern can be used with the back to wall and wall hung WCs.



COMPACT & TALL BASINS &  
PEDESTALS

45cm basin	40cm deep	CM.0001
55cm basin	40cm deep	CM.0002
65cm basin	40cm deep	CM.0003

TALL pedestal	(A)	FP.1977
STANDARD pedestal	(B)	FP.1032
Semi pedestal		SP.1033



On all sanitaryware  
See website for details



Crystal Taps



Basin mixer  
with pop-up waste  
15.3cm x 5.2cm x 16.4cm  
CTA2



Basin mixer  
without pop-up waste  
13.8cm x 5.2cm x 16.4cm  
CTA1



Mini basin mixer  
without pop-up waste  
13.8cm x 4.8cm x 15cm  
CTA8



Single lever  
bath filler  
19.6cm x 5.5cm x 16.6cm  
CTA5



Bath filler  
deck mounted  
17.5cm x 23.2cm x 16.9cm  
CTA6



Bidet mixer with  
pop-up waste  
13.3cm x 5.2cm x 16.4cm  
CTA4



Tall basin mixer  
without pop-up waste  
13.7cm x 5.2cm x 32.4cm  
CTA3



Single lever bath filler on  
stand pipe  
Floor standing  
19.6cm x 5.5cm x 90.3cm  
Bath filler CTA5  
Stand pipe W24  
Combined price



Bath filler  
on stand pipes  
Floor standing  
17.5cm x 23.2cm x 89.5cm  
Bath filler CTA6  
Stand pipes W7  
Combined price



Detail of  
swivelling  
hose mount  
on Crystal  
bath  
shower  
mixer  
CTA 7

Bath shower mixer  
on stand pipes  
Floor standing  
17.5cm x 30.2cm x 89.5cm  
Bath filler CTA7  
Stand pipes W7  
Combined price



Detail of  
swivelling  
hose mount  
on Crystal  
bath  
shower  
mixer  
CTA 7

Bath shower  
mixer  
Deck mounted  
17.5cm x 30.2cm x 25cm  
CTA7

Crystal Taps

Each range features extensive options including basin mixers with and without pop-up waste, tall options for vanity basins, mini options for cloakroom uses, bidet mixers, bath fillers and bath shower mixers which can be deck mounted or used with floor-standing legs to provide the ultimate luxury in your contemporary bathroom.



Sapphire Taps



Sapphire Basin & Bath Taps



Basin mixer  
with pop-up waste  
16.2cm x 5.2cm x 15.4cm  
CTA11



Basin mixer  
without pop-up waste  
15cm x 5.2cm x 15.4cm  
CTA9



Mini basin mixer  
without pop-up waste  
14.5cm x 4.8cm x 14.6cm  
CTA10



Bidet mixer with  
pop-up waste  
13.3cm x 5.2cm x 15.4cm  
CTA13



Single lever  
bath filler  
20cm x 55cm x 16.2cm  
CTA14



Bath filler  
deck-mounted  
17.9cm x 23.2cm x 15.9cm  
CTA15



Tall basin mixer  
without pop-up waste  
15cm x 5.2cm x 31.3cm  
CTA12



Single lever bath filler on  
stand pipe  
Floor standing  
20cm x 5.5cm x 89.8cm  
Bath filler CTA14  
Stand pipe W24  
Combined price



Bath filler  
on stand pipes  
Floor standing  
17.9cm x 23.2cm x 89.5cm  
Bath filler CTA15  
Stand pipes W7  
Combined price



Bath shower mixer  
on stand pipes  
Floor standing  
17.9cm x 30.2cm x 89.5cm  
Bath filler CTA16  
Stand pipes W7  
Combined price



Detail of  
swivelling hose  
mount

Bath shower  
mixer  
Deck mounted  
17.9cm x 30.2cm x 25cm  
CTA16





CLEANING MADE EASY  
The easy-clean clip-on, clip-off brass basket mounting system.



Small rectangular wire basket  
13cm x 11cm x 3.4cm A28CHR



Large rectangular wire basket  
26cm x 12cm x 5.4cm A29CHR



Large deep rectangular wire basket  
26cm x 12cm x 8.4cm A30CHR



Small corner wire basket  
15cm x 15cm x 3.3cm A31CHR



Large corner wire basket  
19cm x 19cm x 3.4cm A32CHR



Large deep corner wire basket  
19cm x 19cm x 8.2cm A33CHR



Square, flat bottomed, basin bottle trap  
36cm x 7cm x 17cm W17



Round, flat bottomed, basin bottle trap  
36cm x 7cm x 18cm W13



Rounded bottle trap  
37cm x 7cm x 20cm W14



Click-clack basin waste  
Slotted for use with overflow basins  
6cm x 6cm x 7cm W11



Click-clack basin waste  
Unslotted for use with basins with no overflow  
6cm x 6cm x 9cm W22



Flip top basin waste  
Slotted for use with overflow basins  
6cm x 6cm x 7cm W18



Cabinet basin waste bottle trap  
Reduces space taken up by normal bottle trap inside cabinet  
W26



Cleaning made easy  
The clip-on, clip-off wire basket mounting system allows for easier cleaning



On all Crystal taps  
See website for details

# Accessories

Britton provides an extensive range of stylish and contemporary accessories in stainless steel, chromium plated brass and ceramic to turn your bathroom into both a beautiful and functional space. Combine soap dishes, tumblers, dispensers or WC brushes all in smooth white ceramic with cool stainless steel shelves.

For our full range of Britton accessories visit [www.brittonbathrooms.com](http://www.brittonbathrooms.com)



Stainless steel shelf  
With ceramic soap dish  
D:11cm x W:10cm x H:5cm  
BR1+4



Stainless steel shelf  
With ceramic tumbler  
D:11cm x W:10cm x H:11cm  
BR2+4



Stainless steel shelf  
With ceramic soap dispenser  
D:11cm x W:10cm x H:20cm  
BR3+4



Offset stainless steel shelf  
With ceramic soap dish  
D:11cm x W:20cm x H:5cm  
BR1+6



Offset stainless steel shelf  
With ceramic tumbler  
D:11cm x W:20cm x H:11cm  
BR2+6



Offset stainless steel shelf  
With ceramic soap dispenser  
D:11cm x W:20cm x H:20cm  
BR3+6



Stainless steel toilet  
roll holder  
D:11cm x W:15cm x H:8cm  
BR12



Stainless steel shelf  
With double ceramic soap dish  
D:11cm x W:20cm x H:5cm  
BR1+1+5



Stainless steel shelf  
With double ceramic tumblers  
D:11cm x W:20cm x H:11cm  
BR2+2+5



Long stainless steel shelf  
D:11cm x W:55cm x H:3cm  
BR7



Stainless steel shelf  
With ceramic soap dish and  
ceramic tumbler  
D:11cm x W:20cm x H:11cm  
BR1+2+5



Stainless steel shelf  
With ceramic tumbler and  
ceramic soap dispenser  
D:11cm x W:20cm x H:20cm  
BR2+3+5



Stainless steel shelf  
With ceramic soap dish and  
ceramic soap dispenser  
D:11cm x W:20cm x H:20cm  
BR1+3+5



WC brush in a  
ceramic holder  
On a stainless steel shelf  
D:11cm x W:10cm x H:39cm  
BR11



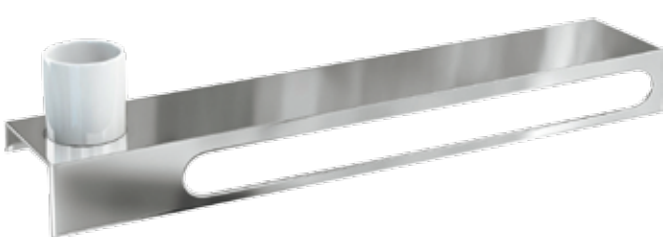
Stainless steel towel rail	
Short 27cm	BR19
Medium 35cm	BR14
Long 55cm (pictured)	BR13



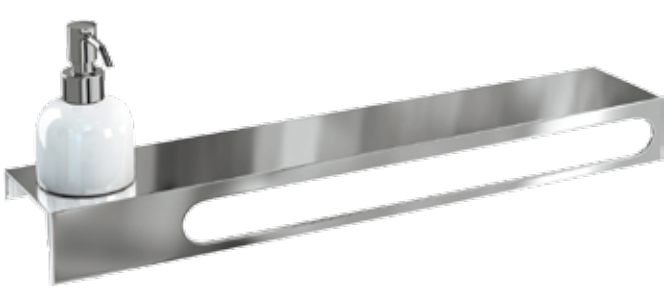
Stainless steel towel rail with shelf	
Medium 35cm	BR15
Long 55cm (pictured)	BR8



Offset stainless steel shelf and towel rail	
With ceramic soap dish	
Medium 35cm	BR1+BR10
Long 55cm (pictured)	BR1+BR9



Offset stainless steel shelf and towel rail	
With ceramic tumbler	
Medium 35cm	BR2+BR10
Long 55cm (pictured)	BR2+BR9



Offset stainless steel shelf and towel rail	
With ceramic soap dispenser	
Medium 35cm	BR3+BR10
Long 55cm (pictured)	BR3+BR9



Stainless steel towel ring	
18cm	BR18



On all accessories  
See website for details



FOR CUBE & FINE:

50cm basin	TR.1027
60cm basin	TR.1026

FOR CURVE:

50cm basin	TR.1029
60cm basin	TR.1028







# Furniture

Britton offers fantastic furniture solutions with its Aqua-Cabinets range; the first furniture range specifically designed for the complexities of the bathroom environment. We provide ample storage solutions for your bathroom, making it both a beautiful and functional space. From fully fitted furniture to free-standing options packed with innovative features such as soft-close doors and drawers, internal lighting or wide opening doors each designed to pair with selected countertop basins. Every piece comes in five colours; White, Reef, Black, Ocean and Anthracite. Whatever your requirements for storage in your bathroom, Aqua Cabinets by Britton covers your needs and tastes perfectly.

All images within this brochure are, where possible, a true representation of our products. Some colours may vary. Please visit the website for more details or visit your local dealer for colour samples.



As shown: Compact white 90cm cabinet & Quattrocast basin (CM2W & Q9040; page 75)

## Clever features & smart details



### ADJUSTABLE GLASS SHELVES

6mm shatterproof safety glass is used to improve visibility inside the units, and to improve hygiene and easy cleaning!



### FIVE COATS OF PAINT

To keep your furniture looking its best five layers of paint are applied, with the top layer being UV resistant to protect against fading by sunlight.



### SOFT-CLOSE DOORS & DRAWERS

All cabinets and furniture pieces are equipped with soft-close drawers and doors for that extra bit of luxury in your bathroom.



### INTEGRATED BASINS

Choose from a range of basins, which cover the entire width of your furniture. This not only looks great with no joins, but also provides a great work-surface.



### CABINET & DRAWER LIGHTING

A battery operated LED light illuminates the inside of your cabinet or drawer. No switches - our motion detector turns on the light with any movement.



### MOOD LIGHTING

Mood lighting under all our mirrored units with lights - to create a warm designer feel within the bathroom.



As shown: Arc white 90cm left hand cabinet & Quattrocast basin (CL3W & Q9045L; page 80)



# Designed using the best materials

*Modern materials that can cope with the demanding environment of a bathroom*



## CERAMIC

Ceramic is a remarkable material with unparalleled resistance to abrasion and staining. It has excellent strength and due to a quality manufacturing process, finished with a silica glaze, our basins have greater depth of colour and prevent porosity.

**The Britton Aqua-Cabinet furniture range has been designed to provide both stylish and functional furniture, which is attractive and fit for purpose in the modern day bathroom.**

## SPACE

Designed with you in mind, the furniture pieces all provide maximum storage abilities, some with wide open doors and curved edges to allow for great accessibility. Integrated basins and worktops also provide ample space for all bathroom necessities.

## BATHROOM SPECIFIC

Crafted using moisture resistant materials, all furniture is resistant to warm and moist environments. Finished with UV resistant lacquers, any natural or illuminated light will also not damage your furniture or cause the colours to fade.

## QUATTROCAST®

Quattrocast is a modern material perfectly adapted for use in the bathroom. Finished with a coat of polyester resin, the basins have a durable layer impervious to bacteria. The base layer is manufactured using exceptionally high-quality materials and allows us to design sharply defined basins with long runs of worktops, perfect for our free-standing furniture pieces. These shapes would be impossible to achieve with traditional materials.







# Freestanding Furniture

## COMPACT

A stunning collection from Britton Aqua-Cabinets comes in the form of the Compact furniture range, including wall-hung or free-standing curved vanity units in either 60cm or 90cm with integral Quattrocast basins. These beautiful additions to the range feature deep soft-close drawers for maximum storage.

*Pages 70-75*



## GULLWING & ARC

Curvaceous free-standing furniture units with integral basins. The rounded doors open wide, allowing for greater use of space and functionality. Motion sensed lighting is optional and soft-closing doors and a glass shelf make this piece an ingenious and innovative stylish storage solution.

*Pages 76-81*



## D 45

The D45 units can be paired with other furniture units from the Aqua-Cabinets range to create a suitable storage solution tailored to your specific needs. Choose from a range of sizes 60cm, 90cm or 120cm as either a single or double basin option. Also available with motion sensed lighting.

*Pages 82-90*



# Fitted Furniture

## D30

D30 Aqua bathroom furniture is the classic format of the modern bathroom. The base cabinets are only 30cm deep, with generous semi-inset basins. The range is versatile with the option to combine drawers, cupboard units and WC's. For maximum storage the range includes a 190cm tall unit. Also available are a complete set of mirrors and mirrored cabinets.

*Pages 91-103*



# Mix & Match

## VARIOUS

Aqua-Cabinets have been designed so that you can match the D45 base units with the D30 base units to maximise function storage space.

*Pages 104-107*

# Cloakroom

## VARIOUS

Perfect for those rooms where space is a challenge - Aqua Cabinets cloakroom furniture offers wall hung and floor standing slimline units offering a solution for every space no matter how small.

The basins are large enough for a main bathroom and there is the luxury of ample storage in the cloakroom range.

*Pages 108-113*



NEW  
COLOUR



aqua  
CABINETS

COMPACT

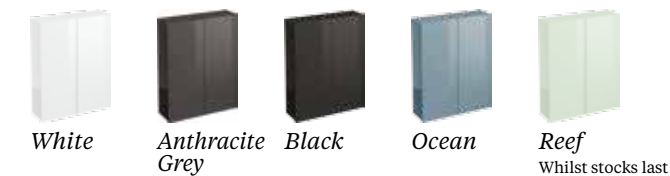


**COMPACT** A stunning collection from Britton Aqua-Cabinets comes in the form of the Compact furniture range, including wall-hung or free-standing curved vanity units in either 60cm or 90cm with integral Quattrocast basins. These beautiful additions to the range feature deep soft-close drawers for maximum storage.

*As shown, this page:* Compact ocean 60cm mirror cabinet (C500; page 75)  
Compact 60cm cabinet & Quattrocast basin (CM10 & Q6040; page 75)

*As shown, opposite page:* Compact anthracite 60cm illuminated mirror (M50A; page 75)  
Compact 60cm cabinet & Quattrocast basin (CM3A & Q6040; page 75)

## Colours



\* To order the correct furniture colour simply remove the 'z' from the product code and replace it with 'W' for White, 'R' for Reef, 'B' for Black, 'G' for Anthracite Grey or 'O' for Ocean.



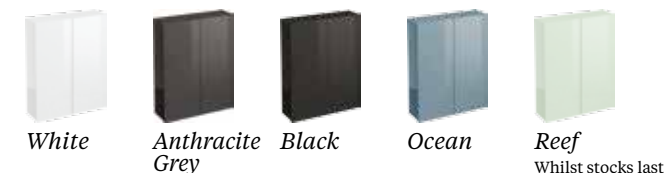


Integral basins provide an ingenious solution to combine beauty and function in your bathroom. The range also includes matching curved mirrors or wall-hung mirrored cabinets for a seamless appearance.

*As shown, this page:* detail of **Compact** white 60cm mirror cabinet (C50W; page 75)

*As shown, opposite page:* **Compact** white 90cm mirror cabinet (C60W; page 75) **Compact** 90cm cabinet & Quattrocast basin (CM2W & Q9040; page 75)

## Colours



\* To order the correct furniture colour simply remove the 'z' from the product code and replace it with 'W' for White, 'R' for Reef, 'B' for Black, 'G' for Anthracite Grey or 'O' for Ocean.



## Compact Cabinets & Mirrors



Compact 60cm two drawer floor standing cabinet with soft-close drawers  
W: 60cm, D: 40cm, H 85cm (with basin)  
Code: CM1z\*



Compact 60cm one drawer wall hung cabinet with soft-close drawers  
W: 60cm, D: 40cm, H 39cm (with basin)  
Code: CM3z\*



Compact 90cm two drawer floor standing cabinet with soft-close drawers  
W: 90cm, D: 40cm, H 85cm (with basin)  
Code: CM2z\*



Compact 90cm one drawer wall hung cabinet with soft-close drawers  
W: 90cm, D: 40cm, H 39cm (with basin)  
Code: CM4z\*



Compact 60cm illuminated wall mirror with LED lights, LED mood lights & infrared sensor  
W: 60cm, D: 15cm, H 71cm  
Code: M50z\*



Compact 60cm mirrored wall cabinet with two soft close doors & glass shelf  
W: 60cm, D: 15cm, H 75cm  
Code: C50z\*



Compact 90cm illuminated wall mirror with LED lights, LED mood lights & infrared sensor  
W: 90cm, D: 15cm, H 71cm  
Code: M60z\*



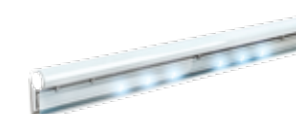
Compact 90cm mirrored wall cabinet with two soft close doors & glass shelf  
W: 90cm, D: 15cm, H 75cm  
Code: C60z\*



Compact 60cm Quattrocast basin with overflow, 1 tap hole only  
W: 60cm, D: 40cm, H: 30cm  
Code: Q6040



Compact 90cm Quattrocast basin with overflow, 1 tap hole only  
W: 90cm, D: 40cm, H: 30cm  
Code: Q9040



Cabinet light  
22cm light for inside cabinets. The LED light switches on via a movement sensor and switches off automatically after 15 seconds after no movement is detected. Powered by four AAA batteries  
Code: LED1



Demisting pad  
Sticks to the rear of the mirror, it prevents the mirror from fogging up in a 35cm² area!  
Code: X01A

### Colours



\* To order the correct furniture colour simply remove the 'z' from the product code and replace it with 'W' for White, 'R' for Reef, 'B' for Black, 'G' for Anthracite Grey or 'O' for Ocean.

As shown: Compact black 90cm illuminated mirror (M60B; page 75) Compact black 90cm cabinet, Quattrocast basin (CM4B & Q9040; page 75). Cube back to wall WC shown on page 30.



**GULLWING** A 60cm curvaceous free-standing furniture unit with integral Quattrocast basin. The rounded doors open wide, allowing for greater use of space and functionality. These can be fitted with motion sensed internal lighting which automatically switches off when no movement is detected. Soft-closing doors and a glass shelf make this piece an ingenious and innovative solution for storage.



Colours



White Anthracite Grey Black Ocean Reef  
Whilst stocks last

\* To order the correct furniture colour simply remove the 'z' from the product code and replace it with 'W' for White, 'R' for Reef, 'B' for Black, 'G' for Anthracite Grey or 'O' for Ocean.

As shown, this & opposite page: Gullwing ocean 60cm illuminated mirror (M200; page 81) Gullwing ocean 60cm cabinet, Quattrocast basin (G410 & Q6045; page 80).  
Accessories page 59. Tap page 52.



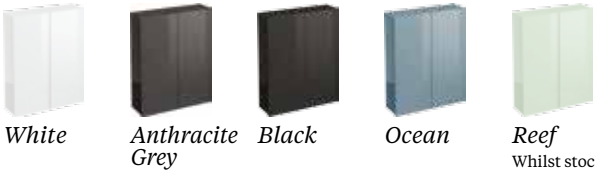


**ARC** 90cm free-standing furniture unit available in both left and right handed options. A useful combination of drawers, shelving and open wide doors, this furniture piece gives great storage potential. Fit with additional motion sensed internal lighting on a timer to automatically switch off when no movement is detected. Pair with 90cm Arc Quattrocast basin which gives a generous depth of 45cm.

NEW  
COLOUR



Colours



\* To order the correct furniture colour simply remove the 'z' from the product code and replace it with 'W' for White, 'R' for Reef, 'B' for Black, 'G' for Anthracite Grey or 'O' for Ocean.

*As shown, this page:* Arc white 90cm illuminated mirror (M30W; page 81) Arc white 90cm left cabinet & 90cm Quattrocast® left basin (Q9045L) (G31W; page 80) .  
*Accessories page 59. Tap page 52.*

*As shown, opposite page:* Arc anthracite 90cm left cabinet (C31A; page 80). 90cm Quattrocast® left basin (Q9045L) (G31W; page 81).  
*Accessories page 59. Tap page 52.*





## Gullwing & Arc Floor Cabinets & Basins



Gullwing 60cm floor standing cabinet  
with two soft close doors & glass shelf  
W: 60cm, D: 45cm, H 86cm (with basin)  
Code: G41z\*



Arc 90cm left floor standing cabinet  
with three soft close doors, 2 glass shelves & a soft close drawer  
W: 90cm, D: 45cm, H 86cm (with basin)  
Code: C31z\*



Arc 90cm right floor standing cabinet  
with three soft close doors, 2 glass shelves & a soft close drawer  
W: 90cm, D: 45cm, H 86cm (with basin)  
Code: C42z\*



Gullwing 60cm Quattrocast basin  
with overflow, 1 tap hole only  
W: 60cm, D: 45cm, H 3cm  
Code: Q6045G

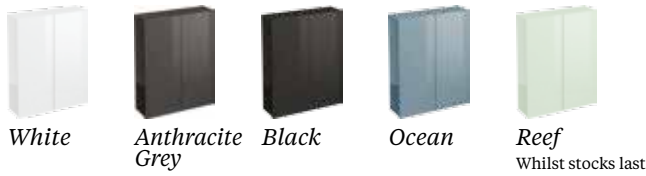


Arc 90cm left Quattrocast basin  
with overflow, 1 tap hole only  
W: 90cm, D: 45cm, H 3cm  
Code: Q9045L



Arc 90cm right Quattrocast basin  
with overflow, 1 tap hole only  
W: 90cm, D: 45cm, H 3cm  
Code: Q9045R

### Colours



\*To order the correct furniture colour simply remove the 'z' from the product code and replace it with 'W' for White, 'R' for Reef, 'B' for Black, 'G' for Anthracite Grey or 'O' for Ocean.



Cabinet light  
22cm light for inside cabinets. The LED light switches on via a movement sensor and switches off automatically after 15 seconds after no movement is detected. Powered by four AAA batteries  
Code: LED1 £33



## Gullwing & Arc Wall Cabinets & Mirrors



30cm Wall cupboard  
with soft close door & two glass shelves  
W: 30cm, D: 15cm, H 75cm  
Code: C10z\*



30cm Mirrored wall cupboard  
with soft close door & two glass shelves  
W: 30cm, D: 15cm, H 75cm  
Code: C30z\*



60cm Wall cupboard  
with two soft close doors & two glass shelves  
W: 60cm, D: 15cm, H 75cm  
Code: C20z\*



60cm Mirrored wall cupboard  
with two soft close doors & two glass shelves  
W: 60cm, D: 15cm, H 75cm  
Code: C40z\*



50cm illuminated wall mirror  
with LED lights, LED mood lights & infrared sensor  
W: 50cm, D: 15cm, H 74cm  
Code: M10z\*



60cm illuminated wall mirror  
with LED lights, LED mood lights & infrared sensor  
W: 60cm, D: 15cm, H 74cm  
Code: M20z\*

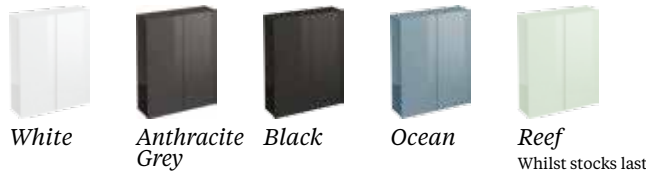


90cm illuminated wall mirror  
with LED lights, LED mood lights & infrared sensor  
W: 90cm, D: 15cm, H 74cm  
Code: M30z\*



Demisting pad  
Sticks to the rear of the mirror, it prevents the mirror from fogging up in a 35cm² area!  
Code: X01A

### Colours



\*To order the correct furniture colour simply remove the 'z' from the product code and replace it with 'W' for White, 'R' for Reef, 'B' for Black, 'G' for Anthracite Grey or 'O' for Ocean.

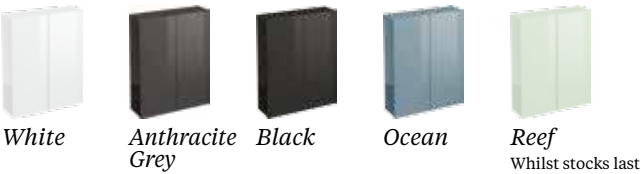
All cabinet doors can be installed with the hinges on the left or the right.

For taps & wastes see pages 52-57.  
For detailed measurements and specifications see: [www.brittonbathrooms.com/aquacabinets/gullwing-floor](http://www.brittonbathrooms.com/aquacabinets/gullwing-floor)



**D45 CERAMIC** A ceramic worktop with integral basin, pair with various furniture units from the Aqua-Cabinets range to create a suitable storage solution tailored to your specific needs. Choose from a range of sizes 60cm, 90cm or 120cm as either a single or double basin option. Also available is motion sensed internal lighting which automatically switches off when no movement is detected.

Colours



\* To order the correct furniture colour simply remove the 'z' from the product code and replace it with 'W' for White, 'R' for Reef, 'B' for Black, 'G' for Anthracite Grey or 'O' for Ocean.

*As shown, this page: D45 90cm ceramic basin (Q9045 page 88) 90cm black double drawer cabinet D46B; page 89). Accessories page 59. Tap page 52.*

*As shown, opposite page: D45 120cm illuminated mirror (M40W; page 90) and D45 120cm ceramic basin (C1245; page 88) two of D45 60cm drawer cabinets each (D45W; page 89). Accessories page 59. Taps page 52.*



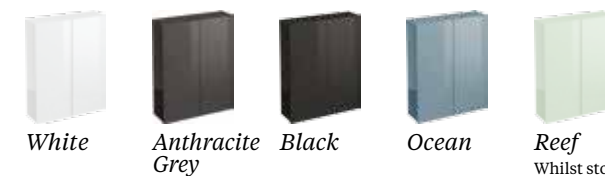




**D45 CERAMIC** This range boasts traditional ceramic basins. The basins are manufactured from Fine Fire Clay. This material has the benefit of greater stability during firing in the kiln, allowing us to create exceptionally large ceramic pieces. The worktops are a generous 45cm deep, and come in a variety of lengths and options - from 60cm to 120cm long, with single or double bowls. The basins are fully formed from within the worktop for a seamless finish.



## Colours



\* To order the correct furniture colour simply remove the 'z' from the product code and replace it with 'W' for White, 'R' for Reef, 'B' for Black, 'G' for Anthracite Grey or 'O' for Ocean.

As shown, this page: D45 120cm ceramic double basin (C1245D; page 88) two of D45 60cm drawer cabinets (D45B; page 89).  
Accessories page 59. Taps page 52



On all furniture  
See website for details

As shown: D45 90cm illuminated mirror (M300; page 90) D45 90cm ceramic basin (C9045; page 88) D45 90cm drawer cabinets (D460; page 89).  
Accessories page 59. Taps page 52.

For taps & wastes see pages 52-57.





**D45 QUATTROCAST®** The D45 Quattrocast® range is versatile and complete. The worktops are a generous 45cm deep, and come in a variety of lengths and options - from 60cm to 120cm long, with single or double basins. The basin has a soft shape, and is fully formed from within the worktop for a pure finish with no seams or joins.



On all furniture  
See website for details

*As shown, this page:* D45 90cm quattrocast basin (Q9045 page 88). D45 90cm floor standing cupboard cabinet (D430 page 89). Accessories page 59. Taps page 52.

*As shown, opposite page:* D45 120cm quattrocast basin (Q1245D page 88). Two of D45 60cm floor standing double drawer unit each (D45W page 89).

For taps & wastes see pages 52-57.

D45 Quattrocast® Basins



D45 60cm Quattrocast basin  
with overflow, 1 tap hole only  
W: 60cm, D: 45cm, H: 3cm  
Code: Q6045



D45 90cm Quattrocast basin  
with overflow, 1 tap hole only  
W: 90cm, D: 45cm, H: 3cm  
Code: Q9045



D45 120cm Quattrocast basin  
with overflow, 1 tap hole only  
W: 120cm, D: 45cm, H: 3cm  
Code: Q1245



D45 120cm Quattrocast double basin  
with overflows, 2 x 1 tap hole only  
W: 120cm, D: 45cm, H: 3cm  
Code: Q1245D

D45 Ceramic Basins



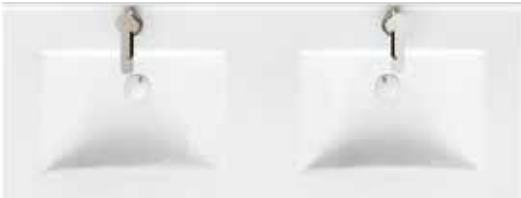
D45 60cm Ceramic basin  
with overflow, 1 tap hole only  
W: 60cm, D: 45cm, H: 2cm  
Code: C6045



D45 90cm Ceramic basin  
with overflow, 1 tap hole only  
W: 90cm, D: 45cm, H: 2cm  
Code: C9045



D45 120cm Ceramic basin  
with overflow, 1 tap hole only  
W: 120cm, D: 45cm, H: 2cm  
Code: C1245



D45 120cm Ceramic double basin  
with overflows, 2 x 1 tap hole only  
W: 120cm, D: 45cm, H: 2cm  
Code: C1245D

D45 Floor Standing Cabinets



D45 30cm floor standing cupboard  
& drawer unit  
with soft close door, glass shelf & soft  
close drawer  
W: 60cm, D: 45cm, H: 82cm  
Code: D41z\*



D45 30cm floor standing triple  
drawer unit  
with two external & one internal soft  
close drawers (see photo on page 82  
for internal drawer layout)  
W: 30cm, D: 45cm, H: 82cm  
Code: D44z\*



D45 60cm floor standing  
cupboard cabinet  
with two soft close doors & glass shelf  
W: 60cm, D: 45cm, H: 82cm  
Code: D42z\*



D45 60cm floor standing double  
drawer unit  
with one external & one internal soft  
close drawers (see photo on page 82  
for internal drawer layout)  
W: 60cm, D: 45cm, H: 82cm  
Code: D45z\*



D45 90cm floor standing  
cupboard cabinet  
with two soft close doors & glass shelf  
W: 90cm, D: 45cm, H: 82cm  
Code: D43z\*



D45 90cm floor standing double  
drawer unit  
with one external & one internal soft  
close drawers (see photo on page 82  
for internal drawer layout)  
W: 90cm, D: 45cm, H: 82cm  
Code: D46z\*

D45 Floor Standing Combinations



120cm combination including:  
60cm cupboard, 2 x 30cm triple drawer units  
Code: D42z\* + D44z\* + D44z\*



120cm combination including:  
2 x 60cm double drawer units  
Code: D45z\* + D45z\*



120cm combination including:  
60cm cupboard, 2 x 30cm cupboard &  
drawer units  
Code: D42z\* + D41z\* + D41z\*

Colours



\* To order the correct furniture colour simply remove the 'z' from the product code and replace it with 'W' for White, 'R' for Reef, 'B' for Black, 'G' for Anthracite Grey or 'O' for Ocean.



Cabinet light  
22cm light for inside cabinets. The LED light  
switches on via a movement sensor and  
switches off automatically after 15 seconds  
after no movement is detected. Powered by  
four AAA batteries  
Code: LED1



D45 Wall Cabinets & Mirrors



30cm Wall cupboard  
with soft close door & two glass shelves  
W: 30cm, D: 15cm, H 75cm  
Code: C10z\*



30cm Mirrored wall  
cupboard  
with soft close door & two glass shelves  
W: 30cm, D: 15cm, H 75cm  
Code: C30z\*



60cm Wall cupboard  
with two soft close doors & two glass shelves  
W: 60cm, D: 15cm, H 75cm  
Code: C20z\*



60cm Mirrored wall  
cupboard  
with two soft close doors & two glass shelves  
W: 60cm, D: 15cm, H 75cm  
Code: C40z\*



50cm illuminated wall  
mirror  
with LED lights, LED mood  
lights & infrared sensor  
W: 50cm, D: 15cm, H 74cm  
Code: M10z\*



60cm illuminated wall  
mirror  
with LED lights, LED mood  
lights & infrared sensor  
W: 60cm, D: 15cm, H 74cm  
Code: M20z\*



90cm illuminated wall  
mirror  
with LED lights, LED mood lights  
& infrared sensor  
W: 90cm, D: 15cm, H 74cm  
Code: M30z\*



120cm illuminated wall  
mirror  
with LED lights, LED mood lights  
& infrared sensor  
W: 120cm, D: 15cm, H 74cm  
Code: M40z\*

Colours



White



Anthracite  
Grey



Black



Ocean



Reef  
Whilst stocks last



Demisting pad  
Sticks to the rear of the mirror, it  
prevents the mirror from fogging  
up in a 35cm² area!  
Code: X01A

\* To order the correct furniture colour simply remove the 'z' from the product code and replace it with 'W' for White, 'R' for Reef, 'B' for Black, 'G' for Anthracite Grey or 'O' for Ocean.





# Fitted furniture

## *The illusion of space*

A fitted bathroom with a straight line of base and wall cabinets covering one wall, often looks bigger than one with free-standing individual pieces. The un-interrupted straight lines accentuate the length of the interior and provide clever storage space in the modern bathroom.

### STEP 1 CHOOSE YOUR COLOUR

Our fitted furniture is available in five colours: White, Anthacite, Reef\*, Black and Ocean.

### STEP 2 WORK OUT THE SIZE

Choose the length of your furniture run - 60cm, 90cm, 120cm, 150cm or 180cm.

### STEP 3 CHOOSE YOUR BASE UNITS

Choose your base units to add up to the length of your run. You will need at least one basin unit, possibly a WC unit, and then make up the rest of the run with low or tall storage units.

### STEP 4 SELECT YOUR BASIN

You can choose from a Quattrocast top with an integrated basin, or a ceramic semi-inset basin with a wooden worktop. The Quattrocast should be the same length as the sum of your low storage, WC and basin units combined. For example, a 60cm basin, plus a 60cm WC plus a 30cm low storage unit requires a 150cm Quattrocast top.

### STEP 5 WHICH WORKTOP?

If you are using a ceramic semi-inset basin then choose a worktop to cover the run of cabinets. The ceramic basin will be cut into the worktop during installation.

### STEP 6 ADD WALL UNITS

Choose wall units to go above your base units. Combinations of 30cm or 60cm wide cupboards with or without mirror doors. Alternatively choose a mirror or illuminated mirror - size options of 50cm, 60cm, 90cm or 120cm wide.

### STEP 7 FINISHING TOUCHES

Include a demisting pad for fitting behind the mirror to stop your mirror misting up. The mirror will need to be wired to the mains. Add internal lighting to cabinets to illuminate your storage when movement is detected.

\*Whilst stocks last

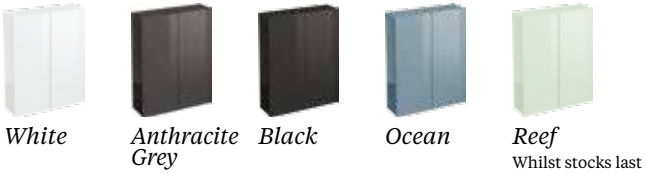
As shown opposite page: D30 semi recessed basin cabinet (D370)  
D30 30cm floor standing cupboard cabinet (2 x D31O)  
D30 60cm mirrored wall cupboard (C40O)  
D30 wall cupboard (2 x C10O)  
D30 30cm cupboard cabinet (D31O)  
D30 back to wall cabinet with flush plate (W32O)





**D30 FITTED BATHROOM FURNITURE** D30 Aqua bathroom furniture is the classic format of the modern bathroom. The base cabinets are only 30cm deep, with generous semi-inset basins. The essence of this range is its versatility - the units can be combined to fit exactly into the space available, combining drawers and cupboards, basins and WC's. For maximum storage the range even includes a 190cm tall unit. To complete the look the range has a complete set of wall cabinets and mirrors. The illuminated mirrors provide a good light for shaving (or even putting on a bit of lipstick).

Colours



\* To order the correct furniture colour simply remove the 'z' from the product code and replace it with 'W' for White, 'R' for Reef, 'B' for Black, 'G' for Anthracite Grey or 'O' for Ocean.

*Opposite page:* 150cm combination of 150cm left quattrocast basin (Q1530L), 60cm semi recessed unit (D37R), 60cm floor standing cabinet (D34R), D30 30cm floor standing cupboard cabinet (D31R), 60cm illuminated wall mirror (M20R).

*This page, top left:* 120cm combination of 30cm drawer unit, 60cm semi recessed unit, and 30cm double shelf unit, with 120cm work top, 55cm Cube semi recessed basin.

*Top right:* 120cm combination of tall unit, 60cm semi recessed unit, 30cm drawer unit, with 90cm Quattrocast® basin left.

*See page 75 for technical details on the Compact furniture range.*





*This page: 120cm combination of 60cm semi recessed unit, 60cm WC unit with flush button, with 120cm Quattrocast® basin left.*

*See page 75 for technical details on the Compact furniture range.*



*This page: 120cm combination of 60cm semi recessed unit with flush button, 120cm Quattrocast basin left, with D30 30cm floor standing tall cupboard cabinet.*

For taps & wastes see pages 52-57.



D30 Back to Wall WC & Bidet Cabinets



60cm back to wall cabinet with concealed cistern tank with top/front access and dual flush button  
W: 60cm, D: 30cm, H 82cm  
Cabinet \*W31z  
Concealed cistern tank W32A  
Combined Price\*



60cm back to wall cabinet with concealed cistern tank with top/front access and rectangular dual flush plate  
W: 60cm, D: 30cm, H 82cm  
Cabinet \*W32z  
Concealed cistern tank W32A  
Combined Price\*



60cm back to wall bidet cabinet  
W: 60cm, D: 30cm, H 82cm  
Code: B31z\*

\*Prices exclude WC's and Bidets

D30 Wall Hung WC & Bidet Cabinet



60cm wall hung WC cabinet including 3 / 6 litre cistern & flush button and internal metal mounting frame  
W: 60cm, D: 30cm, H 82cm  
W33z  
W33A Steel frame for WC Unit



60cm wall hung WC cabinet including 3 / 6 litre cistern & flush plate and internal metal mounting frame  
W: 60cm, D: 30cm, H 82cm  
W32z  
W33A Steel frame for WC Unit



60cm wall hung bidet cabinet including internal metal mounting frame  
W: 60cm, D: 30cm, H 82cm  
B31z  
B32A Steel frame for bidet unit

\*Prices exclude WC's and Bidets

Colours



\* To order the correct furniture colour simply remove the 'z' from the product code and replace it with 'W' for White, 'R' for Reef, 'B' for Black, 'G' for Anthracite Grey or 'O' for Ocean.



All Britton WC fittings are factory set at 3L and 6L flush. They can be adjusted on site to flush at 2½L and 4½L.



All Britton Cistern fittings are WRAS approved



D30 Floor Standing Cabinets



D30 60cm semi-recessed basin cabinet with two soft close doors & glass shelf  
W: 60cm, D: 30cm, H 82cm  
Code: D37z\*  
\* excludes basin



D30 60cm floor standing cupboard cabinet with two soft close doors & two glass shelves  
W: 60cm, D: 30cm, H 82cm  
Code: D33z\*



D30 60cm floor standing cupboard cabinet with soft close doors, glass shelf & soft close drawer  
W: 60cm, D: 45cm, H 82cm  
Code: D34z\*



D30 30cm floor standing cupboard cabinet with soft close doors & two glass shelves  
W: 30cm, D: 30cm, H 82cm  
Code: D31z\*



D30 30cm floor standing cupboard cabinet with soft close door, glass shelf & soft close drawer  
W: 30cm, D: 45cm, H 82cm  
Code: D32z\*



D30 30cm floor standing tall cupboard cabinet with two soft close doors & four glass shelves  
W: 30cm, D: 45cm, H 190cm  
Code: D35z\*



Cabinet basin waste bottle trap  
Reduces the space taken up by a normal bottle trap inside your cabinet  
Code: W26



Cabinet light  
22cm light for inside cabinets. The LED light switches on via a movement sensor and switches off automatically after 15 seconds after no movement is detected. Powered by four AAA batteries  
Code: LED1



Plumbing cover  
W: 90cm, D: 17cm, H 25cm  
Code: X02G

Plumbing cover is only available in Anthracite





D30 60cm Basins



Fine 60cm ceramic semi-recessed basin  
with overflow, 1 tap hole only  
see page 13 & 16  
W: 60cm, D: 45cm, H 2cm  
Code: 40.6610



Cube 60cm ceramic semi-recessed basin  
with overflow, 1 tap hole only  
see page 24 & 28  
W: 60cm, D: 45cm, H 2cm  
Code: 20.1954



Curve 60cm ceramic semi-recessed basin  
with overflow, 1 tap hole only  
see page 40  
W: 60cm, D: 45cm, H 2cm  
Code: 30.1965



60cm Quattrocast basin  
with overflow, 1 tap hole only  
see page 40  
W: 60cm, D: 30cm, H 3cm  
Code: Q6030

D30 90cm Basins



D30 90cm left Quattrocast basin  
with overflow, 1 tap hole only  
W: 90cm, D: 30cm, H 3cm  
Code: Q9030L



D30 90cm right Quattrocast basin  
with overflow, 1 tap hole only  
W: 90cm, D: 30cm, H 3cm  
Code: Q9030R

D30 120cm Basins



D30 120cm left Quattrocast basin  
with overflow, 1 tap hole only  
W: 120cm, D: 30cm, H 3cm  
Code: Q1230L



D30 120cm right Quattrocast basin  
with overflow, 1 tap hole only  
W: 120cm, D: 30cm, H 3cm  
Code: Q1230R



D30 120cm double Quattrocast basin  
with overflows, 2 x 1 tap holes only  
W: 120cm, D: 30cm, H 3cm  
Code: Q1230D

D30 150cm Basins



D30 150cm left Quattrocast basin  
with overflow, 1 tap hole only  
W: 150cm, D: 30cm, H 3cm  
Code: Q1530L



D30 150cm right Quattrocast basin  
with overflow, 1 tap hole only  
W: 150cm, D: 30cm, H 3cm  
Code: Q1250R



D30 Wall Cabinets



30cm Wall cupboard  
with soft close door & two glass shelves  
W: 30cm, D: 15cm, H 75cm  
Code: C10G\*



30cm Mirrored wall cupboard  
with soft close door & two glass shelves  
W: 30cm, D: 15cm, H 75cm  
Code: C30G\*



60cm Wall cupboard  
with two soft close doors & two glass shelves  
W: 60cm, D: 15cm, H 75cm  
Code: C20G\*



60cm Mirrored wall cupboard  
with two soft close doors & two glass shelves  
W: 60cm, D: 15cm, H 75cm  
Code: C40G\*

D30 Worktops



60cm Worktop  
W: 60cm, D: 30cm, H 2cm  
Code: T31G\*



90cm Worktop  
W: 90cm, D: 30cm, H 2cm  
Code: T32G\*



120cm Worktop  
W: 120cm, D: 30cm, H 2cm  
Code: T33G\*



150cm Worktop  
W: 150cm, D: 30cm, H 2cm  
Code: T34G\*

Colours



White



Anthracite Grey



Black



Ocean



Reef

Whilst stocks last

\* To order the correct furniture colour simply remove the 'z' from the product code and replace it with 'W' for White, 'R' for Reef, 'B' for Black, 'G' for Anthracite Grey or 'O' for Ocean.

All cabinet doors can be installed with the hinges on the left or the right.

For taps & wastes see pages 52-57.  
For detailed measurements and specifications see: [www.brittonbathrooms.com/aquacabinets/wall-cabinets](http://www.brittonbathrooms.com/aquacabinets/wall-cabinets)

## D30 Illuminated Mirrors



50cm illuminated wall mirror  
with LED lights, LED mood lights & infrared sensor  
W: 50cm, D: 15cm, H 74cm  
Code: M10z\*



60cm illuminated wall mirror  
with LED lights, LED mood lights & infrared sensor  
W: 60cm, D: 15cm, H 74cm  
Code: M20z\*



90cm illuminated wall mirror  
with LED lights, LED mood lights & infrared sensor  
W: 90cm, D: 15cm, H 74cm  
Code: M30z\*



120cm illuminated wall mirror  
with LED lights, LED mood lights & infrared sensor  
W: 120cm, D: 15cm, H 74cm  
Code: M40z\*

Mirrors also available in the  
Compact range. Page 75.



Demisting pad  
Sticks to the rear of the mirror, it prevents  
the mirror from fogging up in a 35cm<sup>2</sup> area!  
Code: X01A



Cabinet light  
22cm light for inside cabinets. The LED light  
switches on via a movement sensor and  
switches off automatically after 15 seconds  
after no movement is detected. Powered by  
four AAA batteries  
Code: LED1

## Cabinet Lighting

## The Magic of Light

The success of a bathroom design is critically dependent on lighting. Not only does it define the interior space, but the bathroom is essential for those important grooming rituals.

Aqua-Cabinets has developed a unique lighting system. To soften harsh shadows a row of white LED lights run along the front top edge, which is then reflected back by the mirror as well - these multiple strips of crisp light provide the optimum light levels. The 'multiple' sources of light mimic sophisticated photographic portraiture lighting set ups.

A further row of white LED lights run along the bottom edge of the mirror. This illuminates the basin/work top area. The multiplicity of light sources not only creates a perception of space, but softens the mood of the living space.

A movement sensor switch is used as the on/off control - this means the lighting can be controlled by the wave of a hand inside the bathroom, rather than having the switch outside (or controlled by a nasty pull cord hanging from the ceiling).

The demisting pad prevents the mirror 'fogging up' if the bath or shower is used. It fits onto the back of the mirror.

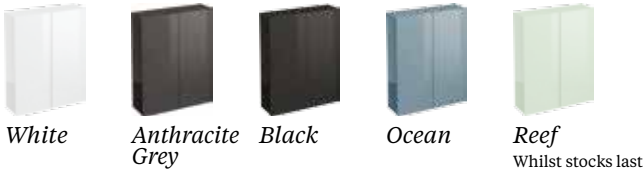


Under-canopy LED lighting



LED mood lighting on underside of mirror

### Colours



\* To order the correct furniture colour simply remove the 'z' from the product code and replace it with 'W' for White, 'R' for Reef, 'B' for Black, 'G' for Anthracite Grey or 'O' for Ocean.



Create your bathroom from a series of storage units and work surfaces to include counter-top basins. Each unit comes in a choice of five colours; Anthracite as shown here, Ocean, White, Black and Reef (whilst stocks last). Specifically designed around you and your lifestyle, you can create a bathroom to match your own individual needs and tastes.



D30 tall unit with doors that can be hinged left or right



60cm double mirrored door wall cabinet



60cm double door wall cabinet

D30 120cm Quattrocast left handed basin

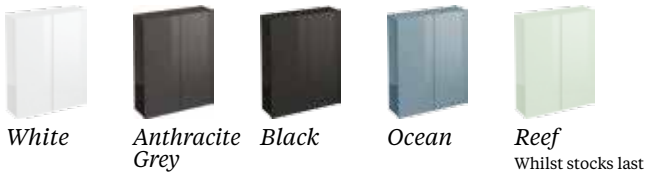


D30 semi-recessed basin unit without worktop excluding basin



D30 back-to-wall WC unit with push button excluding WC & worktop

Colours



\* To order the correct furniture colour simply remove the 'z' from the product code and replace it with 'W' for White, 'R' for Reef, 'B' for Black, 'G' for Anthracite Grey or 'O' for Ocean.

Opposite page: 30cm tall unit, 60cm mirrored wall cabinet, 60cm wall cabinet. 60cm semi-recessed unit with 120cm left-handed Quattrocast basin, Sapphire basin mixer without pop-up waste, 60cm WC unit with flush button, Cube back-to-wall WC with Carbamide soft-close seat.

See page 98-102 for technical details on fitted furniture.





ILLUSION OF SPACE

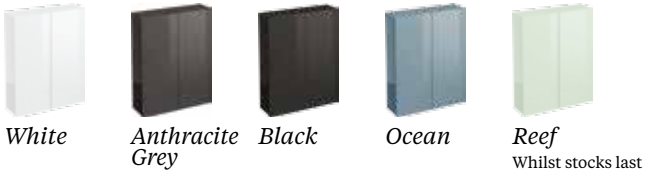
More is less! A 'fitted' bathroom with a straight line of base and wall cabinets covering one wall often looks bigger than one with free standing individual pieces.

The uninterrupted straight lines accentuates the length of the interior - a clever trick of the eye. The real beauty is that a fitted look also solves the problem of storage space in the modern bathroom.

UNITS USED IN THIS BATHROOM



Colours



\* To order the correct furniture colour simply remove the 'z' from the product code and replace it with 'W' for White, 'R' for Reef, 'B' for Black, 'G' for Anthracite Grey or 'O' for Ocean.



MIX & MATCH

Aqua-Cabinets have been designed so that you can match the D450 base units with the D300 base units to maximise function storage space.

A combination of base units with the wall cabinets and mirrors gives the bathroom an integrated and fully designed look.

UNITS USED IN THIS BATHROOM



Colours



\* To order the correct furniture colour simply remove the 'z' from the product code and replace it with 'W' for White, 'R' for Reef, 'B' for Black, 'G' for Anthracite Grey or 'O' for Ocean.



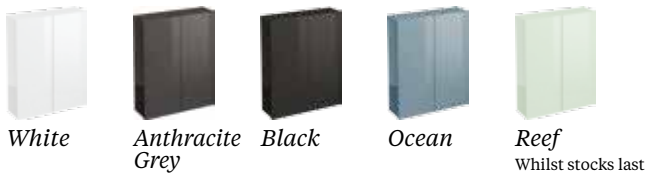
# Compact 25



**COMPACT** The Compact 25 has a projection of only 25cm, making it ideal for long, narrow cloakrooms. The width of 50.5cm is sufficient to still make this basin function very well for washing hands. If you have the luxury of a slightly wider cloakroom, the Compact 30.5 allows that slightly more spacious washing area. The basins (which are handed - specify the tap on the left or on the right) are made from glazed ceramic. The cabinets are available as either a wall hung or floor standing unit. The cabinet has a glass shelf and soft close hinges. The door is reversible to open either left or right.

As shown: Compact 25 cloakroom left basin CR.1730 £109 (this page)  
Compact 25 ocean wall hung cabinet R10W.

## Colours



\* To order the correct furniture colour simply remove the 'z' from the product code and replace it with 'W' for White, 'R' for Reef, 'B' for Black, 'G' for Anthracite Grey or 'O' for Ocean.

## 25CM DEEP CABINETS & BASINS



Compact 25 Cloakroom basin left  
with overflow, 1 tap hole only  
W: 50.5cm, D: 25cm, H 15cm  
Code: CR.1730



Compact 25 Cloakroom basin right  
with overflow, 1 tap hole only  
W: 50.5cm, D: 25cm, H 15cm  
Code: CR.1731



Compact 25 floor mounted Cloakroom cabinet  
with soft close door & glass shelf  
W: 49cm, D: 21cm, H 77cm  
Code: R20z\*



Compact 25 wall mounted Cloakroom cabinet  
with soft close door & glass shelf  
W: 49cm, D: 21cm, H 51cm  
Code: R10z\*

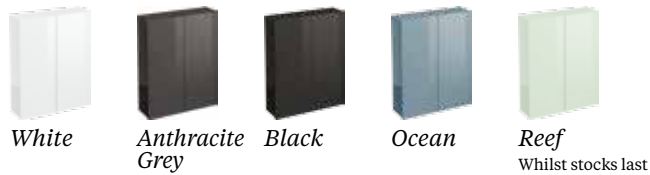
# Compact 30.5



**WALL HUNG OR FLOOR STANDING** The Compact cloakroom cabinets come in two forms: wall hung for an ultra modern look, or floor standing for homes for a more traditional look (and useful for cloakrooms with plasterboard walls) Both cabinets also come in 25cm depth or 30.5cm depth.

As shown: Compact 30.5 cloakroom left basin CR.1731 (opposite page)  
Compact 30.5 white floor mounted cabinet R40W.

## Colours



\* To order the correct furniture colour simply remove the 'z' from the product code and replace it with 'W' for White, 'R' for Reef, 'B' for Black, 'G' for Anthracite Grey or 'O' for Ocean.

## 30.5CM DEEP CABINETS & BASINS



Compact 30.5 Cloakroom basin left  
with overflow, 1 tap hole only  
W: 50.5cm, D: 30.5cm, H 15cm  
Code: CR.1976



Compact 30.5 Cloakroom basin right  
with overflow, 1 tap hole only  
W: 50.5cm, D: 30.5cm, H 15cm  
Code: CR.1975



Compact 30.5 floor mounted Cloakroom cabinet  
with soft close door & glass shelf  
W: 49cm, D: 27cm, H 77cm  
Code: R40z\*



Compact 30.5 wall mounted Cloakroom cabinet  
with soft close door & glass shelf  
W: 49cm, D: 27cm, H 51cm  
Code: R30z\*

## All-in-One



As shown: Compact 25 cloakroom left basin CR.1730, ALLinONE cabinet R50R.

**ALL-IN-ONE** A cloakroom always has space as a challenge. The All-in-One is an ingenious solution! The unit is 50cm wide, and only 25cm deep. Yet not only does it contain a very useful storage cabinet underneath the ceramic basin, but the toilet roll and the brush and holder is contained within the space of the cabinet. The brush and toilet roll side can be mounted either on the left or the right hand side of the unit. The door is reversible to open left or right. The unit is floor standing, and contains one glass shelf.

### 25CM DEEP CABINETS & BASINS



Compact 25 Cloakroom basin left  
with overflow, 1 tap hole only  
W: 50.5cm, D: 25cm, H 15cm  
Code: CR.1730



Compact 25 Cloakroom basin right  
with overflow, 1 tap hole only  
W: 50.5cm, D: 25cm, H 15cm  
Code: CR.1731



ALLinONE floor standing cabinet  
includes brass WC brush & toilet paper roll  
W: 49cm, D: 21cm, H 77cm  
Code: R50z\*\*  
\*\* excludes basin

## Aquacube



**AQUACUBE** The AquaCube unit is that special combination of a unit small enough for a cloakroom yet with a decent size basin which would not embarrass a main bathroom. The basins (and there are three options) are made from glazed ceramic, which are mounted on a wall fixed cabinet big enough for most essentials. The cabinet has soft close hinges. The door is reversible to open left hand or right hand. Matching mirrors and cabinets are available - see pages 14 and 15.

As shown: Curve 50cm basin 30.1967, Aquacube cabinet R60B.

### Colours



White Anthracite Grey Black Ocean Reef\*  
\*Whilst stocks last

\* To order the correct furniture colour simply remove the 'z' from the product code and replace it with 'W' for White, 'R' for Reef, 'B' for Black, 'G' for Anthracite Grey or 'O' for Ocean.

For taps & wastes see pages 52-57.  
For detailed measurements and specifications see: [www.brittonbathrooms.com/aquacabinets/aquacube](http://www.brittonbathrooms.com/aquacabinets/aquacube)

### 31CM DEEP CABINETS & BASINS



Fine 50cm basin  
with overflow, 1 tap hole only  
see page 15 & 16  
W: 50cm, D: 40cm, H 15cm  
Code:40.1974



Cube 50cm basin  
with overflow, 1 tap hole only  
see page 22 & 28  
W: 50cm, D: 40cm, H 15cm  
Code:20.1956



Curve 50cm basin  
with overflow, 1 tap hole only  
W: 50cm, D: 40cm, H 15cm  
Code: 30.1967



Aquacube wall hung cabinet  
with soft close door  
W: 39cm, D:31cm, H48cm  
Code: R60z\*\*  
\*\* excludes basin





# Floor Mounted Tablet



As shown: Tablet floorstanding black W35B  
(see page 42 for Curve back to wall pan & soft close seat).

## Colours



\* To order the correct furniture colour simply remove the 'z' from the product code and replace it with 'W' for White, 'R' for Reef, 'B' for Black, 'G' for Anthracite Grey or 'O' for Ocean.

All Britton Cistern fittings are WRAS approved



**THE TABLET** A 21st century solution for the contemporary bathroom. The TABLET is a wc furniture unit designed to maximise space, with only a 15cm projection from the back wall. The ingenious feature is the reflective glass front. Made of hard wearing safety glass, with a gloss white backing, the Tablet is highly functional whilst, at the same time, increasing the perception of space within the bathroom. The TABLET is available in two options: a floor standing back to wall pan version, and a wall hung pan option with integrated steel frame for worry free rigidity and strength. The WRAS approved cistern fittings are operated from a rectangular chrome flush plate cleverly situated on the top surface. The fittings feature a water saving 3 and 6 litre flush. The carcass is colour coordinated with the AquaCabinet base and wall units. Designed to provide easy access to the internal cistern for care – free maintenance and quick installation.

The tall pan is not available as an option with the Tablet. The Tablet can only be used with a standard height pan.



Floor mounted tablet with 3 / 6 litre cistern & dual flush plate  
W: 55cm, D: 15cm, H 90cm  
Code: W35z\*



# Wall Hung Tablet



All Britton WC fittings are factory set at 3L and 6L flush. They can be adjusted on site to flush at 2½L and 4½L.



As shown: Tablet wall hung ocean W35O  
(see page 43 for Curve wall hung pan & soft close seat).

## Colours



\* To order the correct furniture colour simply remove the 'z' from the product code and replace it with 'W' for White, 'R' for Reef, 'B' for Black, 'G' for Anthracite Grey or 'O' for Ocean.



Wall hung tablet with 3 / 6 litre cistern & dual flush plate  
W: 55cm, D: 15cm, H 90cm  
Code: W35z\*  
and steel frame for wall hung WC unit  
Code: W33A

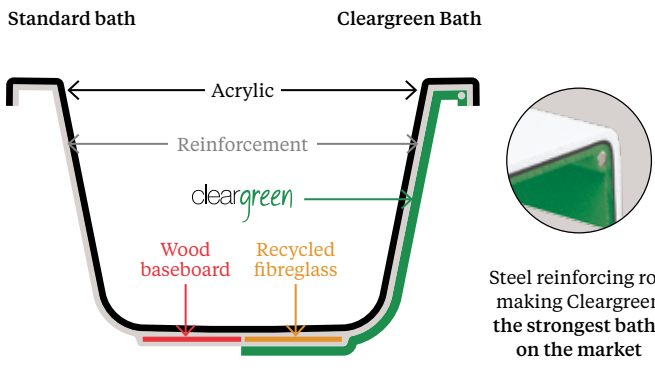
# Bathing

Britton offers an extensive collection of free-standing, single or double-ended, off-set and showering baths from the Cleargreen range. Each of the baths are manufactured to produce a greener product using 30% recycled material, built stronger to withstand an enormous weight of 2.3 tonnes. The baths manufactured in this way also retain heat for 30 minutes longer than a standard bath providing you with a longer, more relaxing bathe. The combination of the unique manufacturing process and steel re-inforcing rods within the bath rims, make Cleargreen baths the most rigid on the market.

For full technical details go to [www.brittonbathrooms.com](http://www.brittonbathrooms.com)

### Looking for a stronger bath?

- > Built stronger to withstand 2.3 tonnes
- > Retains heat 30 minutes longer than a standard bath
- > 10 year guarantee
- > Supplied with galvanised steel leg frame
- > Manufactured from 30% recycled material





**FREEFUERTE** A sumptuous, oval shaped free-standing two piece bath with surround which will act as an eye-catching centre-piece to any contemporary bathroom. Pair with a luxurious floor-standing bath filler.



Freefuerte bath (174cm x 87cm) and surround and Sapphire floor-standing bath filler. Click-clack bath waste and overflow.  
*See page 124 for technical details on the Freefuerte bath.*

**FREESTARK**

A subtle free-standing two piece bath with soft lines and rounded edges. Match with the Fine ceramic range for seamless consistent design across your contemporary bathroom.



Freestark bath (174cm x 80cm) and surround with Crystal deck-mounted bath filler. Click-clack bath waste and overflow.  
*See page 124 for technical details on the Freestark bath.*



10 YEAR GUARANTEE  
ON ALL OUR BATHS  
*See website for details*  
[www.brittonbathrooms/home/guarantee](http://www.brittonbathrooms/home/guarantee)



Freefuerte



Freestark



**FREEFORTIS** A slanted ergonomically shaped two piece bath, which looks great paired with the Cube ceramic range. For an ultra minimalistic look, opt with a single lever bath filler.



Freefortis bath (180cm x 80cm) and surround with Crystal single lever bath filler on single stand pipe. Click-clack bath waste and overflow.

See page 125 for technical details on the Freefortis bath.

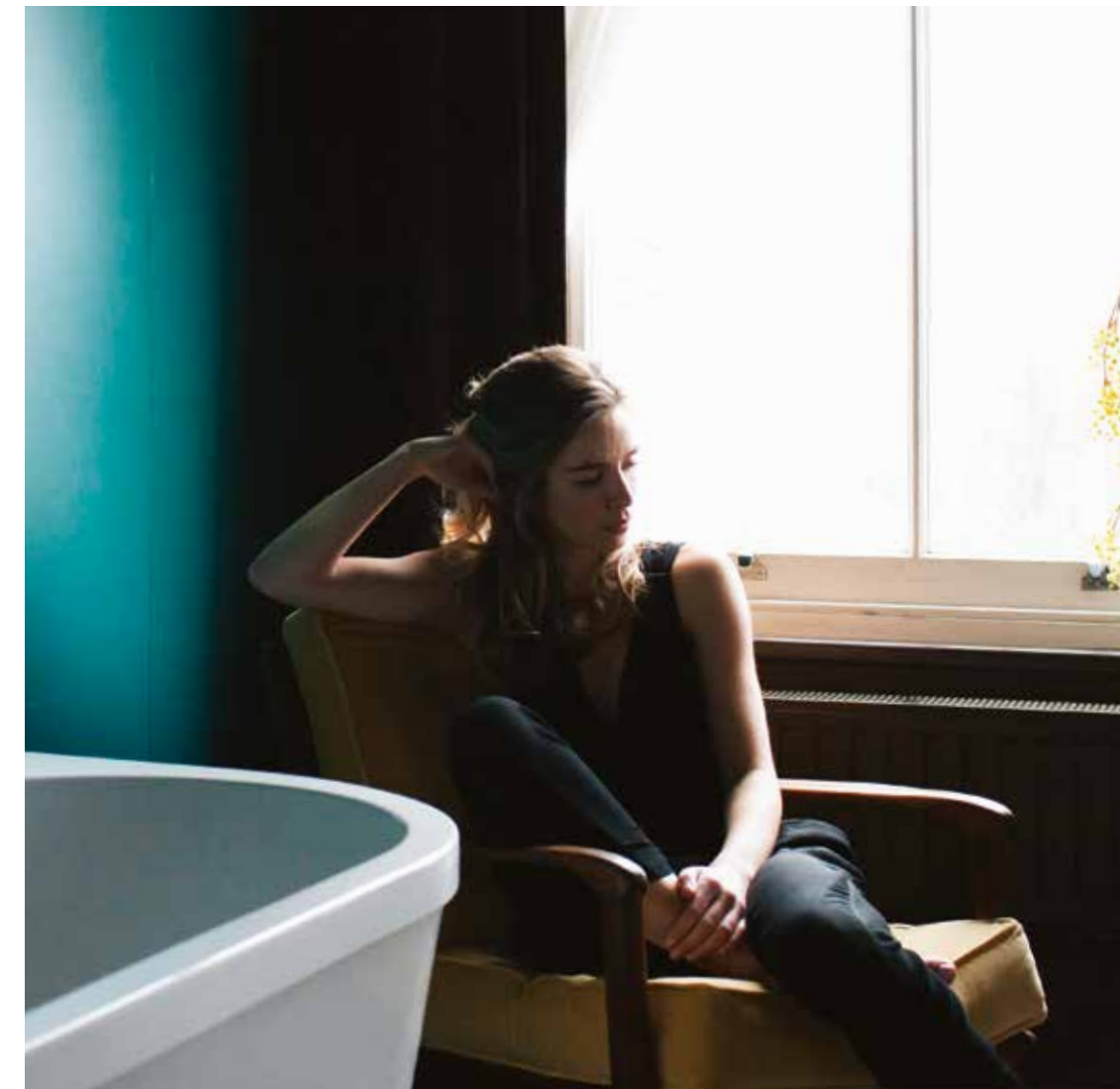


10 YEAR GUARANTEE  
ON ALL OUR BATHS  
See website for details  
[www.brittonbathrooms/home/guarantee](http://www.brittonbathrooms/home/guarantee)





NEW



**NEW SATURN** This unique back-to-wall bath will make the most of available wall space within your bathroom, giving a greater impression of space. Its smooth curves look great in contemporary settings and the corner edges of the bath provide ample space for bathroom necessities.

*Opposite page:* Saturn bath (169cm x 75cm) and surround, Crystal bath shower mixer and click clack waste.

*See page 126 for technical details on the Saturn bath.*



New Saturn



**10 YEAR GUARANTEE  
ON ALL OUR BATHS**  
*See website for details*  
[www.brittonbathrooms/home/guarantee](http://www.brittonbathrooms/home/guarantee)



NEW



**NEW NOUVEAU & NOUVEAU PETITE** The elliptical shape with its substantial edge makes the Nouveau a striking centrepiece in any contemporary bathroom. Its grand structure with a length of 178cm, allows for generous internal capacity. The same striking bath is available with a smaller length of 150cm to fit into most contemporary bathrooms.

*Opposite page and above: Nouveau bath and surround and Crystal bath shower mixer.  
See page 126 for technical details on the Nouveau baths.*



New Nouveau (178cm x 81cm)



New Nouveau Petite (150cm x 80cm)

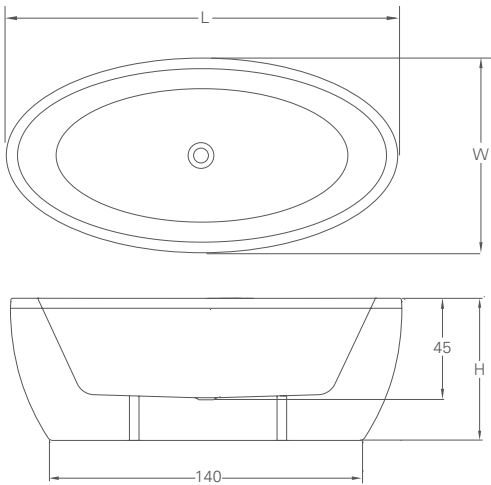


Free-standing baths

FREEFUERTE



Freefuerte double-ended free-standing bath, *page 116*

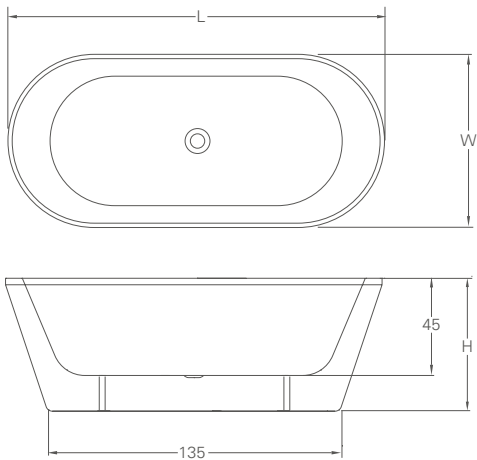


Freefuerte double-ended free-standing bath & surround	
Bath	R31
Surround	R32
Complete bath	
Size	L: 174, W: 87, H: 63
Weight empty	45 kg
Material	TSFR
Tap hole option	0, 1, 2 (supplied un-drilled)
Compatible bath grips	R30, R37
Compatible wastes	CW8
Compatible overflow	Hole pre-drilled

FREESTARK



Freestark double-ended free-standing bath, *page 117*



Freestark double-ended free-standing bath & surround	
Bath	R33
Surround	R34
Complete bath	
Size	L: 174, W: 80, H: 62
Weight empty	44 kg
Material	TSFR
Tap hole option	0, 1, 2 (supplied un-drilled)
Compatible bath grips	R30, R37
Compatible wastes	CW8
Compatible overflow	Hole pre-drilled

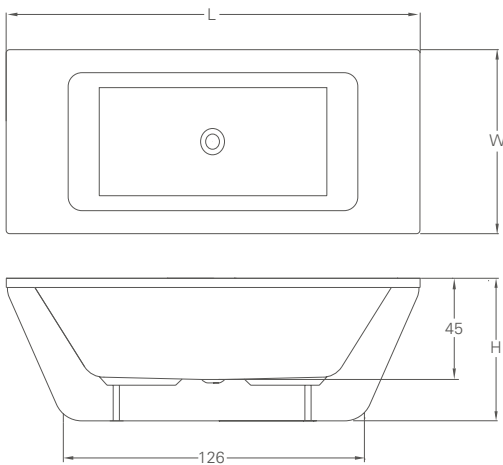


10 YEAR GUARANTEE  
ON ALL OUR BATHS  
*See website for details*  
[www.brittonbathrooms/home/guarantee](http://www.brittonbathrooms/home/guarantee)

FREEFORTIS



Freefortis double-ended free-standing bath, *page 119*



Freefortis double-ended free-standing bath & surround	
Bath	R35
Surround	R36
Complete bath	
Size	L: 180, W: 80, H: 62
Weight empty	54 kg
Material	TSFR
Tap hole option	0, 1, 2 (supplied un-drilled)
Compatible bath grips	R30, R37
Compatible wastes	CW8
Compatible overflow	Hole pre-drilled

Bath Grips



Luxury bath grips (pair)  
For use on all rectangular baths  
D: 3, W: 27, H: 7  
Weight: 1.9kg  
Finish: Chrome  
**Code: R30**



Standard bath grips (pair)  
For use on all rectangular baths  
D: 2, W: 22, H: 4  
Weight: 0.4kg  
Finish: Chrome  
**Code: R37**

Waste



Click-clack bath waste  
For single and double  
ended baths  
D: 94, W: 85, H: 800  
**Code: CW8**

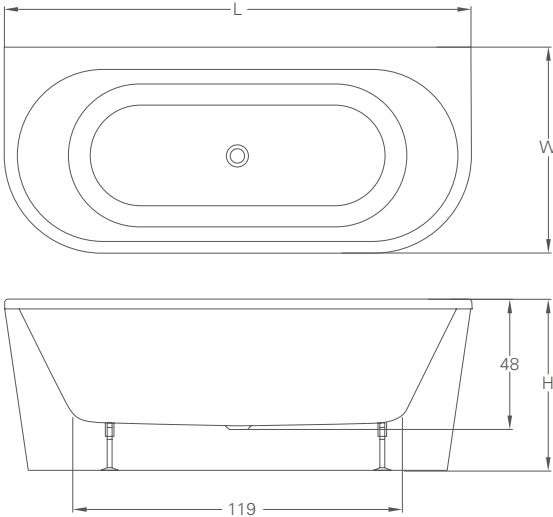
Free-standing baths

10  
year  
guarantee

10 YEAR GUARANTEE  
ON ALL OUR BATHS  
See website for details  
www.brittonbathrooms/home/guarantee



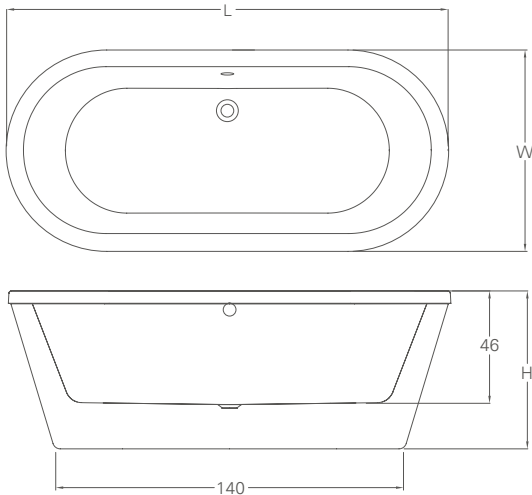
New Saturn modern bath, page 120



New Saturn modern bath	
Bath	M4N
Surround	M4B
Complete bath	
Size	L: 169, W: 75, H: 63
Weight empty	31 kg
Material	TSFR
Tap hole option	0, 1, 2 (supplied un-drilled)
Compatible bath grips	R30, R37
Compatible wastes	CW8, see p125
Compatible overflow	Hole pre-drilled



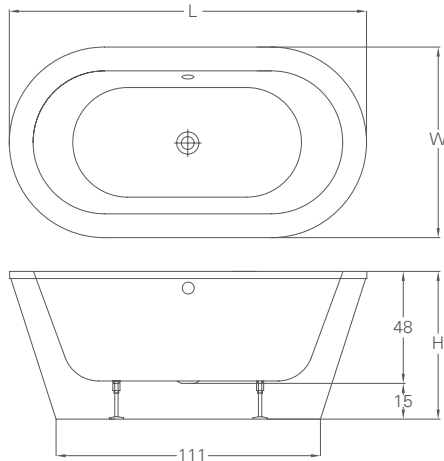
New Nouveau modern bath, page 122



New Nouveau modern bath	
Bath	M1N
Surround	M1B
Complete bath	
Size	L: 178, W: 81, H: 60
Weight empty	36 kg
Material	TSFR
Tap hole option	0, 1, 2 (supplied un-drilled)
Compatible bath grips	R30, R37
Compatible wastes	CW8, see p125
Compatible overflow	Hole pre-drilled

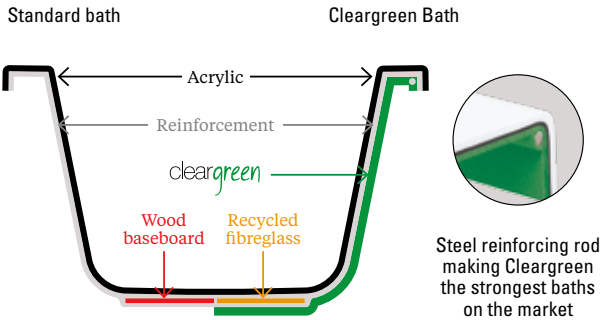


New Nouveau Petite modern bath, page 122

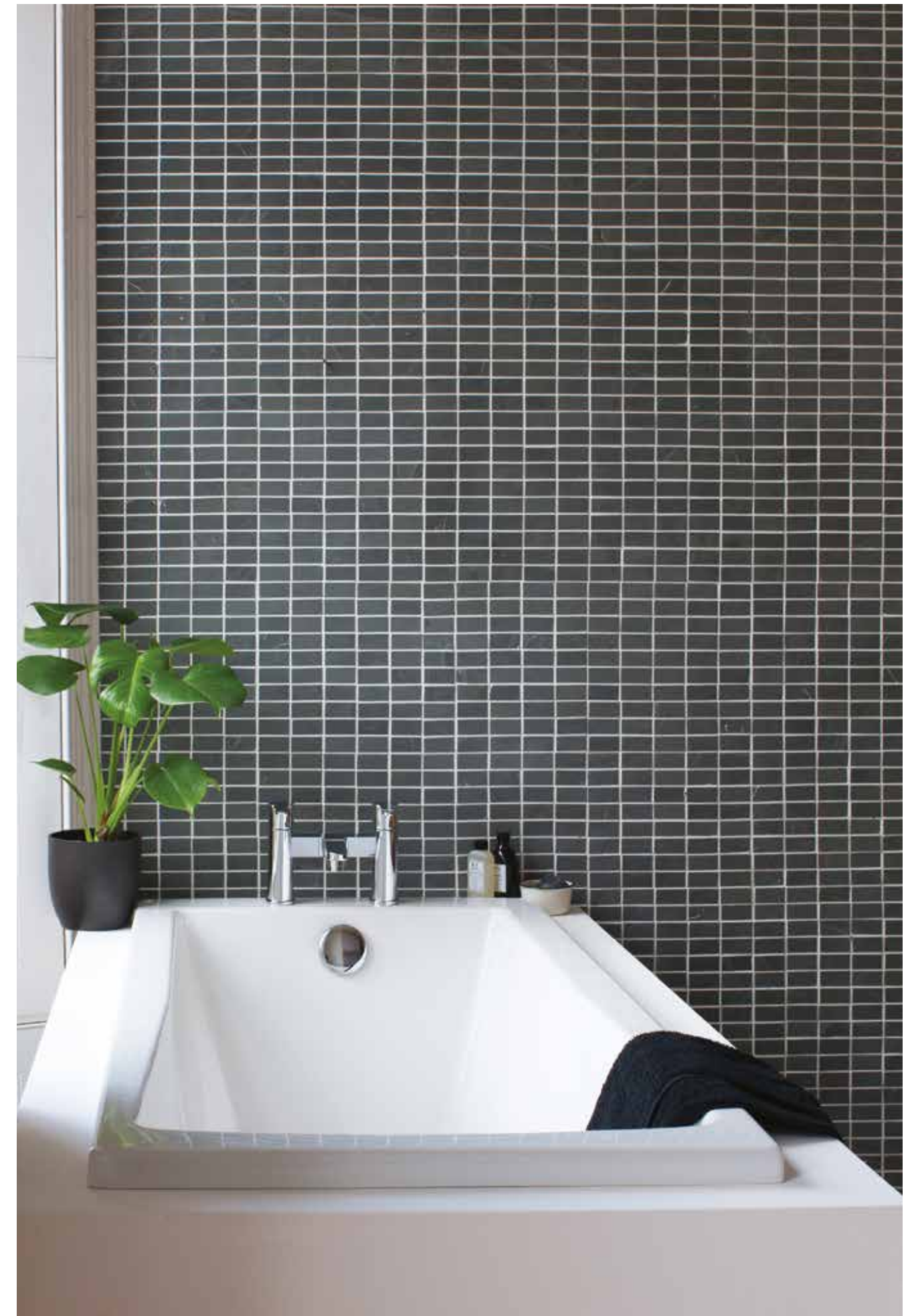


New Nouveau Petite modern bath	
Bath	M2N
Surround	M2B
Complete bath	
Size	L: 150, W: 80, H: 63
Weight empty	26 kg
Material	TSFR
Tap hole option	0, 1, 2 (supplied un-drilled)
Compatible bath grips	R30, R37
Compatible wastes	CW8, see p125
Compatible overflow	Hole pre-drilled

- Why Cleargreen baths are the best
- Built stronger to withstand 2.3 tonnes!
  - Retains heat longer than a standard bath
  - 10 year guarantee on all Cleargreen baths
  - Supplied with galvanised steel leg frame
  - Manufactured from 30% recycled material
  - Cleargreen baths use encapsulated recycled composite baseboards which is stronger and greener than chipboard
  - Cleargreen baths use reinforced quality Lucite acrylic
  - 10mm diameter steel reinforcing rod runs inside rectangular bath rims







SUSTAIN SINGLE ENDED BATH - SQUARE

The Sustain provides a square internal shape for those preferring the more geometric and angular look. With the taps situated at one end of the bath, this is a great option to place into corners or against a wall.



10 YEAR GUARANTEE  
ON ALL OUR BATHS  
See website for details  
[www.brittonbathrooms/home/guarantee](http://www.brittonbathrooms/home/guarantee)

Optional bath grips (pair)

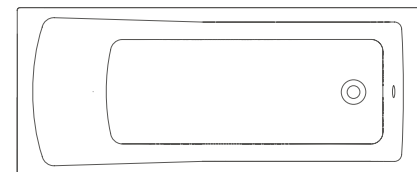


Opposite page: Sustain bath 170cm x 70cm with Crystal bath filler, Click-clack bath waste and overflow.

See page 138 for technical details on the Sustain bath.  
To view shower screens that fit the Sustain see page 140-141.



Length



Width

Available in

Length	Width
160cm	70cm
170cm	70cm
170cm	75cm
170cm	80cm
180cm	80cm





**10 year**  
guarantee

10 YEAR GUARANTEE  
ON ALL OUR BATHS  
See website for details  
[www.brittonbathrooms/home/guarantee](http://www.brittonbathrooms/home/guarantee)



### REUSE SINGLE ENDED BATH - ROUND

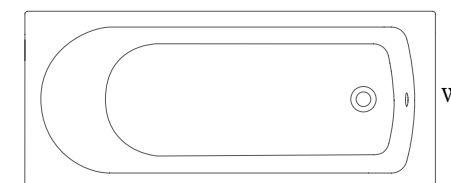
The Reuse bath has a rounded, softer internal shape for those who prefer a simple look with clean lines.

*Opposite page:* Reuse bath 170 x 70cm, four-fold bath screen and Crystal bath shower mixer. Click-clack bath waste and overflow.

*See page 138 for technical details on the Reuse bath, to view shower screens that fit the Reuse see page 140-141.*



Length



Width

Available in

Length	Width
150cm	70cm
<b>NEW</b> 150cm	75cm
160cm	70cm
170cm	70cm
<b>NEW</b> 170cm	75cm
170cm	80cm
180cm	75cm



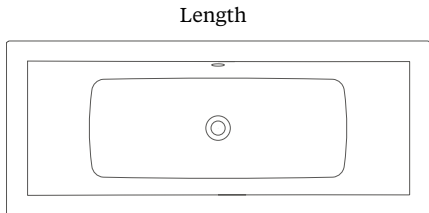


ENVIRO DOUBLE ENDED BATH - SQUARE

The Enviro provides a square internal shape for those preferring the more angular look.

*Opposite page and above:* Enviro bath 170 x 70cm with front panel and end panels each with Sapphire deck mounted bath shower mixer. Click-clack bath waste and overflow.

*See page 139 for technical details on the Enviro bath, to view shower screens that fit the Enviro see page 140-141.*



Available in

Length	Width
170cm	70cm
170cm	75cm
170cm	80cm
180cm	80cm

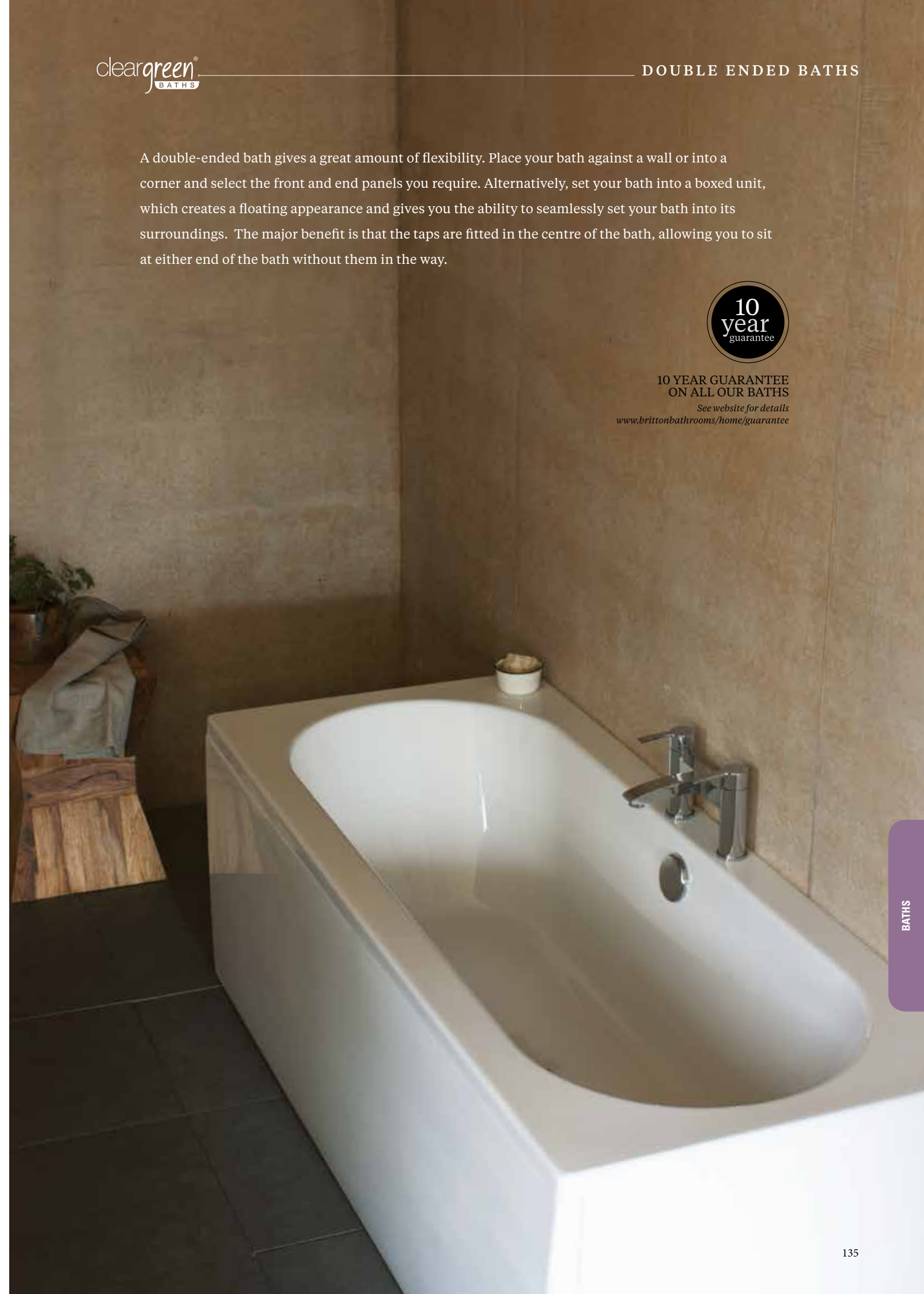




A double-ended bath gives a great amount of flexibility. Place your bath against a wall or into a corner and select the front and end panels you require. Alternatively, set your bath into a boxed unit, which creates a floating appearance and gives you the ability to seamlessly set your bath into its surroundings. The major benefit is that the taps are fitted in the centre of the bath, allowing you to sit at either end of the bath without them in the way.



10 YEAR GUARANTEE  
ON ALL OUR BATHS  
*See website for details*  
[www.brittonbathrooms/home/guarantee](http://www.brittonbathrooms/home/guarantee)



## VERDE DOUBLE ENDED BATH - ROUND

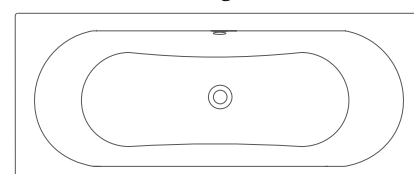
The Verde bath has a rounded, softer internal shape.

*Opposite page:* Verde bath 170 x 70cm with front panel and end panels each with Sapphire deck mounted bath filler. Click-clack bath waste and overflow.

*See page 139 for technical details on the Verde bath, to view shower screens that fit the Verde see page 140-141.*



Length



Width

Available in

	Length	Width
<b>NEW</b>	160cm	75cm
	170cm	70cm
	170cm	75cm
	170cm	80cm
<b>NEW</b>	180cm	75cm
	180cm	80cm
<b>NEW</b>	180cm	90cm
<b>NEW</b>	190cm	80cm





**VIRIDE OFFSET BATH** This offset bath is available in either right or left-handed options to give you the flexibility of placement within your bathroom. The soft curves gives this bath a contemporary feel and allows the piece to blend harmoniously into its surroundings.



Left-hand



Right-hand



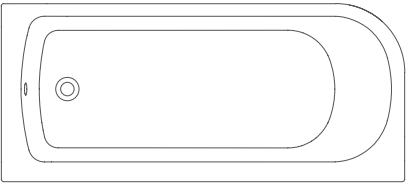
10 YEAR GUARANTEE  
ON ALL OUR BATHS  
See website for details  
[www.brittonbathrooms/home/guarantee](http://www.brittonbathrooms/home/guarantee)

Above: Viride bath left-handed with offset panel with Crystal deck-mounted bath shower mixer. Cube 60cm basin with square fronted full pedestal with Crystal basin mixer. Click-clack bath waste and overflow.

See page 140 for technical details on the Viride bath, to view shower screens that fit the Viride see page 140-141.



Length



Width

Available in

Length	Width	Handed
170cm	75cm	Left
170cm	75cm	Right
180cm	75cm	Left
180cm	75cm	Right

NEW

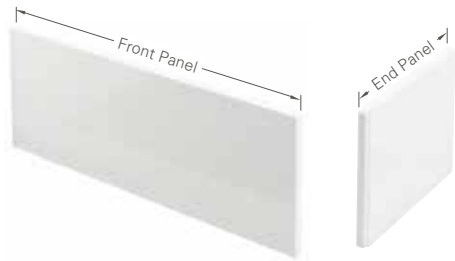
NEW

Single-ended baths

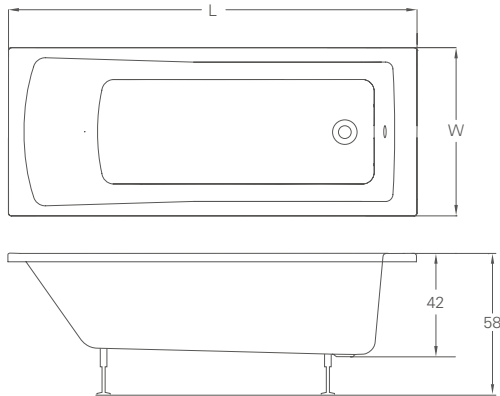
- Why Cleargreen baths are the best

  - Built stronger to withstand 2.3 tonnes!
  - Retains heat longer than a standard bath
  - 10 year guarantee on all Cleargreen baths
  - Supplied with galvanised steel leg frame
  - Manufactured from 30% recycled material
- Cleargreen baths use encapsulated recycled composite baseboards which is stronger and greener than chipboard
  - Cleargreen baths use reinforced quality Lucite acrylic
  - 10mm diameter steel reinforcing rod runs inside rectangular bath rims

SUSTAIN



Sustain bath, page 128



Sustain Baths & Panels  
Single-ended - Square internal

Length (L)	Width (W)	Bath Code	Front Panel Code	End Panel Code
160	70	R4	R24F	R27E
170	70	R5	R25F	R27E
170	75	R6	R25F	R28E
170	80	R42	R25F	R29E
180	80	R7	R26F	R29E

- Compatible wastes

Compatible shower screens

Compatible bath grips

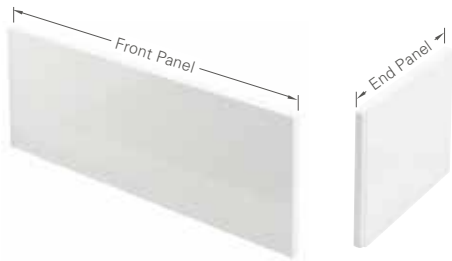
Overflow pre-drilled

Acrylic panels are fully reinforced with GRP
- CW8

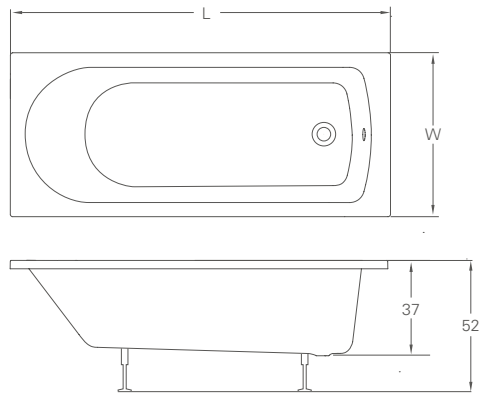
BS1, BS2, BS3, BS4, BS5

R37, R30

REUSE



Reuse bath, page 130



Reuse Baths & Panels  
Single ended - Rounded internal

Length (L)	Width (W)	Bath Code	Front Panel Code	End Panel Code
150	70	R11	R23F	R27E
150	75	R51	R23F	R28E
160	70	R12	R24F	R27E
170	70	R13	R25F	R27E
170	75	R52	R25F	R27E
170	80	R44	R25F	R29E
180	75	R14	R26F	R28E

- Compatible wastes

Compatible shower screens

Compatible bath grips

Overflow pre-drilled

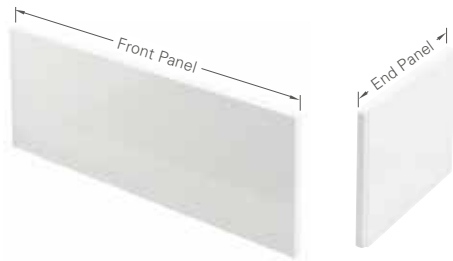
Acrylic panels are fully reinforced with GRP
- CW8

BS1, BS2, BS3, BS4, BS5

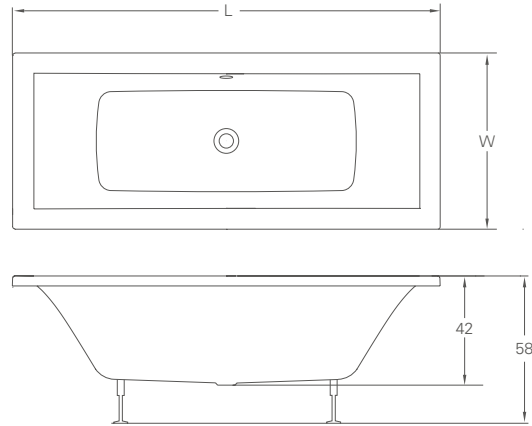
R37, R30

Double-ended baths

ENVIRO



Enviro bath, page 132



Enviro Baths & Panels  
Double ended - Square internal

Length (L)	Width (W)	Bath Code	Front Panel Code	End Panel Code
170	70	R1	R25F	R27E
170	75	R2	R25F	R28E
170	80	R41	R25F	R29E
180	80	R3	R26F	R29E

- Compatible wastes

Compatible shower screens

Compatible bath grips

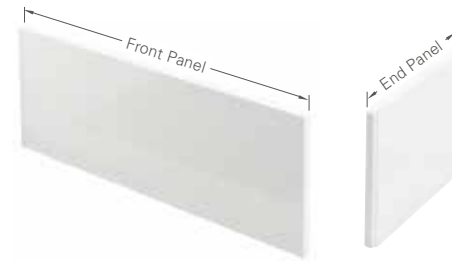
Overflow pre-drilled

Acrylic panels are fully reinforced with GRP
- CW8

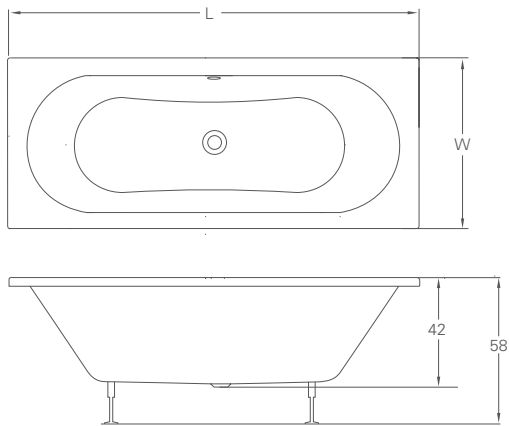
BS1, BS2, BS3, BS4, BS5

R37, R30

VERDE



Verde bath, page 134



Verde Baths & Panels  
Double ended - Rounded internal

Length (L)	Width (W)	Bath Code	Front Panel Code	End Panel Code
160	75	R45	R24F	R28E
170	70	R8	R25F	R27E
170	75	R9	R25F	R27E
170	80	R43	R25F	R29E
180	75	R46	R26F	R28E
180	80	R10	R26F	R29E
180	90	R47	R26F	R49E
190	80	R48	R50F	R29E

- Compatible wastes

Compatible shower screens

Compatible bath grips

Overflow pre-drilled

Acrylic panels are fully reinforced with GRP
- CW8

BS1, BS2, BS3, BS4, BS5

R37, R30



- Why Cleargreen baths are the best
- Built stronger to withstand 2.3 tonnes!

Retains heat longer than a standard bath

10 year guarantee on all Cleargreen baths

Supplied with galvanised steel leg frame

Manufactured from 30% recycled material

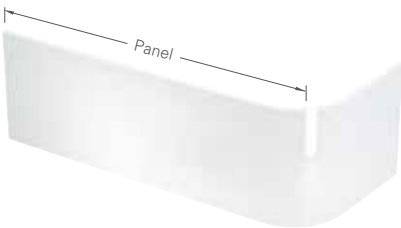
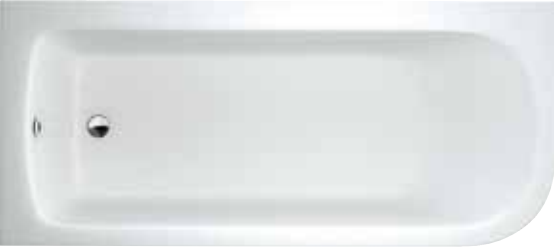
Cleargreen baths use encapsulated recycled composite baseboards which is stronger and greener than chipboard

Cleargreen baths use reinforced quality Lucite acrylic

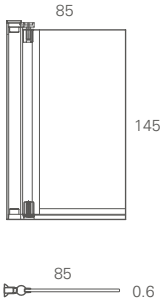
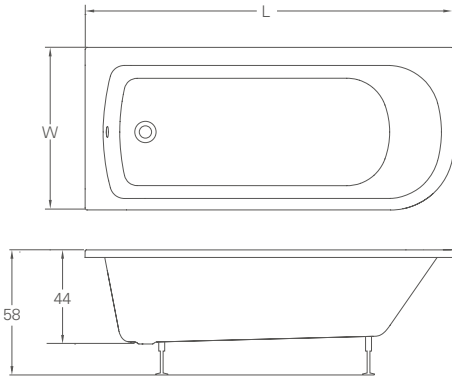
10mm diameter steel reinforcing rod runs inside rectangular bath rims

Shower screens

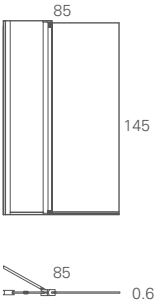
VIRIDE



Viride offset bath, page 136



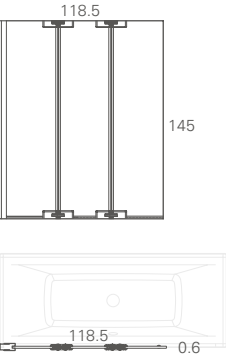
Single panel bathscreen  
3M coating as standard  
(Can be fitted to either left or right hand baths)  
D: 2, W: 85, H: 145  
Screen thickness: 6mm  
Code: BS1



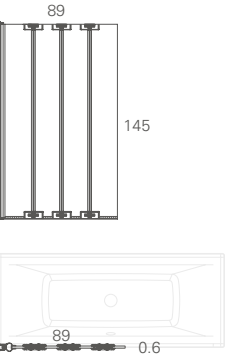
Bathscreen with fixed panel  
3M coating as standard  
(Can be fitted to either left or right hand baths)  
D: 2, W: 85, H: 145  
Screen thickness: 6mm  
Code: BS2



Bathscreen with access panel  
3M coating as standard  
(Can be fitted to either left or right hand baths)  
D: 2, W: 85, H: 145  
Screen thickness: 6mm  
Code: BS3



Three-panel bathscreen  
3M coating as standard  
(Can be fitted to either left or right hand baths)  
D: 2, W: 118, H: 145  
Screen thickness: 5mm  
Code: BS4



Four-panel bathscreen  
3M coating as standard  
(Can be fitted to either left or right hand baths)  
D: 2, W: 88, H: 145  
Screen thickness: 5mm  
Code: BS5

Viride Baths & Panels

Off-set		Left Hand Baths		Right Hand Baths	
					
Length (L)	Width (W)	Bath Code	Panel Code	Bath Code	Panel Code
170	75	R38 LH	R40	R39 RH	R40
180	75	R53 LH	R55	R54 RH	R55

Compatible wastes CW8  
Compatible shower screens BS1, BS2, BS3, BS4, BS5  
Compatible bath grips R37, R30  
Overflow pre-drilled  
Acrylic panels are fully reinforced with GRP



**ECOCURVE** The EcoCurve showering bath features sweeping lines and elegant curves, which provide a generous showering space. Available in both left or right-handed options, pair with a specific EcoCurve shower screen for the flexibility of both a shower and a relaxing bathe.

*For the full range of Britton thermostatic shower valves see page 151.*



Right-hand



Left-hand



**10 YEAR GUARANTEE  
ON ALL OUR BATHS**  
See website for details  
[www.brittonbathrooms/home/guarantee](http://www.brittonbathrooms/home/guarantee)

*Opposite page:* EcoCurve left handed showering bath 170 x 75cm, EcoCurve front panel, EcoCurve end panel, EcoCurve bathscreen, Crystal bath filler. Concealed single outlet thermostatic shower valve including round shower arm and rose. Click-clack bath waste and overflow.

*See page 148 for technical details on the Ecocurve bath, to view shower screens that fit the EcoCurve see page 148.*





**ECOROUND** A subtle rounded showering bath, which will work seamlessly with Curve or Compact ceramic ranges. The EcoRound comes in both a 170cm length and a 150cm for bathrooms where space is limited but its subtle curves provide an exceptionally generous showering space. Mount taps to the corner of the bath, for a comfortable bathe.

*Opposite page:* EcoRound left handed showering bath 170 x 90cm. EcoRound front panel, EcoRound end panel, EcoRound bath screen, Crystal bath filler. Click-click bath waste and overflow.

*See page 149 for technical details on the EcoRound bath.*



Right-hand



Left-hand



**ECOSQUARE** A geometric and angular showering bath to pair with other square or Cube shaped products from the Britton range. The EcoSquare is available in both left and right-handed options to make placement flexible within your bathroom. Choose an EcoSquare bath screen with access panel which allows you to reach in and turn on your shower without getting wet. It also features a unique pivoting glass panel to either follow the edge of the bath preventing flooding, or move into the bath to create more of an enclosure feel.



Right-hand



Left-hand



**10 YEAR GUARANTEE  
ON ALL OUR BATHS**  
See website for details  
[www.brittonbathrooms/home/guarantee](http://www.brittonbathrooms/home/guarantee)

*Opposite page:* EcoSquare right handed showering bath 170 x 85cm, EcoSquare front panel, EcoSquare end panel, EcoSquare bathscreen and Sapphire bath shower mixer. Click-clack bath waste and overflow.

*See page 150 for technical details on the EcoSquare bath, to view shower screens that fit the EcoSquare see page 150.*



Showering baths

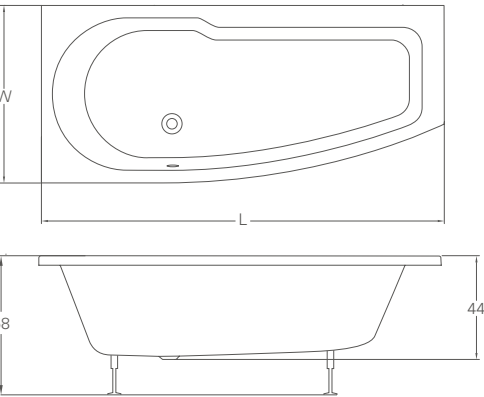


10 YEAR GUARANTEE  
ON ALL OUR BATHS  
See website for details  
[www.brittonbathrooms/home/guarantee](http://www.brittonbathrooms/home/guarantee)

ECOCURVE



EcoCurve showering bath, *page 143*



EcoCurve Baths & Panels

Showering

Left Hand Baths



Length (L)	Width (W)	Bath Code	Front Panel Code	End Panel Code
170	75/50*	R15 LH	R16F	R16E

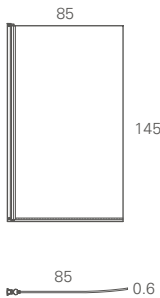
Right Hand Baths



Length (L)	Width (W)	Bath Code	Front Panel Code	End Panel Code
170	75/50*	R16 RH	R16F	R16E

\*75cm at the widest, 50cm at the narrowest point.

Compatible wastes CW8  
Compatible shower screens EcoCurve bath screen page 148  
Compatible bath grips R37, R30 (placement should be away from the screen)  
Overflow pre-drilled  
Acrylic panels are fully reinforced with GRP

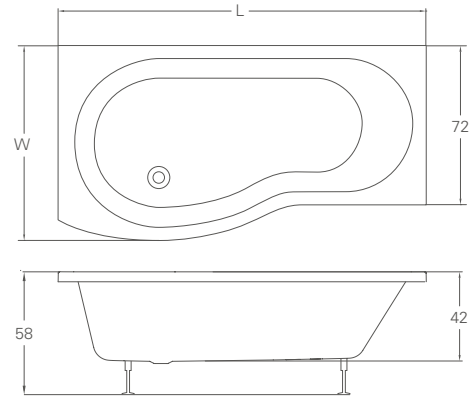


EcoCurve bathscreen  
3M coating as standard  
(Can be fitted to either left or right hand baths)  
D: 2, W: 85, H: 145  
Screen thickness: 6mm  
Code: BS6

ECOROUND



EcoRound 150 & 170 showering bath, *page 144*



EcoRound Baths & Panels

Showering

Left Hand Baths



Length (L)	Width (W)	Bath Code	Front Panel Code	End Panel Code
150	81/74*	R19 LH	R20F	R20E
170	90/74*	R21 LH	R22F	R20E

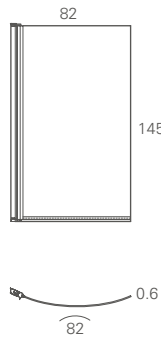
Right Hand Baths



Length (L)	Width (W)	Bath Code	Front Panel Code	End Panel Code
150	81/74*	R20 RH	R20F	R20E
170	90/74*	R22 RH	R22F	R20E

\*90cm at the widest, 74cm at the narrowest point.

Compatible wastes CW8  
Compatible shower screens EcoCurve bath screen page 149  
Compatible bath grips R37, R30 (placement should be away from the screen)  
Overflow pre-drilled  
Acrylic panels are fully reinforced with GRP



EcoRound bathscreen  
3M coating as standard  
(Can be fitted to either left or right hand baths)  
D: 2, W: 82, H: 145  
Screen thickness: 6mm  
Code: BS7

Showering baths

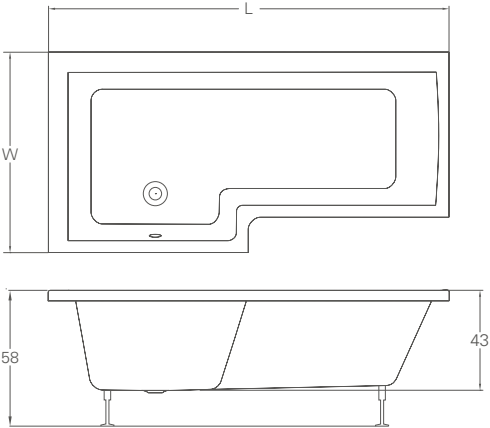


10 YEAR GUARANTEE  
ON ALL OUR BATHS  
See website for details  
[www.brittonbathrooms/home/guarantee](http://www.brittonbathrooms/home/guarantee)

ECOSQUARE



EcoSquare showering bath, page 147



EcoSquare Baths & Panels  
Showering

Left Hand Baths

Length (L)	Width (W)	Bath Code	Front Panel Code	End Panel Code
170	85/70*	R17 LH	R18F	R27E

Right Hand Baths

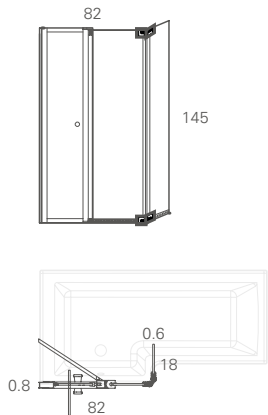
Length (L)	Width (W)	Bath Code	Front Panel Code	End Panel Code
170	85/70*	R18 RH	R18F	R27E

\*85cm at the widest, 70cm at the narrowest point.

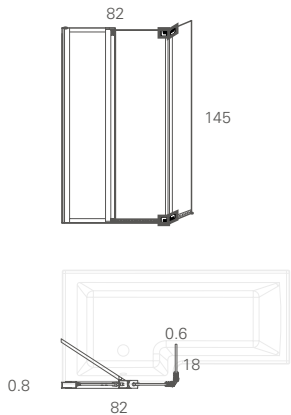
Compatible wastes CW8  
Compatible shower screens EcoSquare bath screen page 150  
Compatible bath grips R37, R30 (placement should be away from the screen)  
Overflow pre-drilled  
Acrylic panels are fully reinforced with GRP



with access panel



without access panel



EcoSquare bathscreen  
with access panel

3M coating as standard  
Screen thickness: 6mm  
D: 18, W: 82, H: 145  
Code: BS8L (Left hand)  
Code: BS8R (Right hand)

EcoSquare bathscreen  
with fixed panel

3M coating as standard  
Screen thickness: 6mm  
D: 18, W: 82, H: 145  
Code: BS9L (Left hand)  
Code: BS9R (Right hand)

Thermostatic shower valves



Concealed thermostatic shower valve with two controls (2 outlets)  
Including round shower arm, rose & slide bar kit  
Valve (V51)  
Arm, rose & kit (V53)

Concealed thermostatic shower valve with three controls (3 outlets)  
Including round shower arm, rose & slide bar kit  
Valve (V52)  
Arm, rose & kit (V53)

Concealed thermostatic shower valve with two controls (2 outlets)  
Including square shower arm, rose & slide bar kit  
Valve (V51)  
Arm, rose & kit (V54)

Concealed single outlet thermostatic shower valve  
Including round shower arm & rose  
Valve (V50)  
Arm & rose (V57)



Concealed thermostatic shower valve with three controls (3 outlets)  
Including square shower arm, rose & slide bar kit  
Valve (V52)  
Arm, rose & kit (V54)

Round exposed thermostatic shower valve  
Including handset & hose (V55)

Square exposed thermostatic shower valve  
Including handset & hose (V56)

Concealed single outlet thermostatic shower valve  
Including square shower arm & rose  
Valve (V50)  
Arm & rose (V58)



# Shower trays

The Zamori 35mm high shower tray range is the most extensive available, with over 60 models to choose from each to fit the space available in your bathroom. All trays are made in acrylic with the option of antibacterial agent, anti slip and slate effect. The trays are made from high quality materials and are acrylic capped with a 20mm x 20mm steel tube to ensure a lifetime of use. The underside is insulated with a flat ABS sheet, making installation and levelling very easy. The range of shapes covers square, rectangular, pentangle, quadrant and offset quadrant.



## FLEXIBLE INSTALLATION

There are a number of ways you can install your shower tray.

**Option 1**

*Placed flat on the floor*

**Option 2**

*Sunk into the floor*

**Option 3**

*Raised above the floor*



## VORTEX TURBO WASTE

All our shower wastes are 90mm diameter high flow Vortex Turbo wastes designed to fit all our trays. They comply with EN274-3. This ensures that the water flows out at up to 30 litres per minute, making the Zamori shower waste one of the most efficient available - suitable for high volume showering applications.

The waste incorporates an easy clean removable filter and is supplied with a solvent weld adaptor for different waste pipe sizes.



## ANTI-BACTERIAL

Zamori has added the silver-based anti bacterial additive Zeomic into the manufacturing process. The anti microbial qualities protect against harmful bacteria and suppresses mould growth,



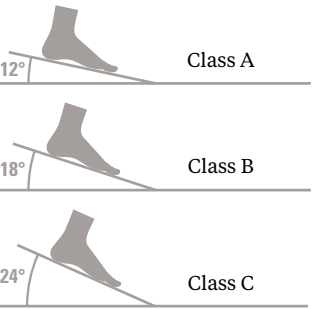
## ANTI-SLIP

Zamori anti-slip is simply the finest available with the highest anti-slip rating.

We are the only manufacturer to thermo bond the Swiss Grip Antislip onto the tray with a curing process - to ensure better performance for a cleaner & longer lasting surface.



### DIN51097 class C anti-slip ramp test

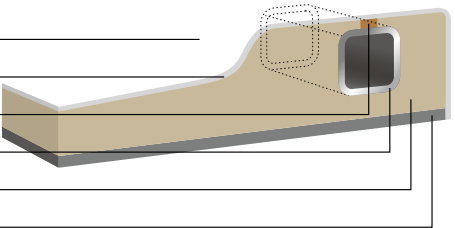


## PATENTED REINFORCEMENT

All our trays are acrylic framed with our patented steel frame, formed to be the exact shape of the tray, to ensure rigidity for a lifetime of use. The trays are flat on the under-surface; this makes installation and levelling very easy.

Our steel frame is the subject of Patent Number: GB2440719 (A)

- 1 Acrylic capped ABS layer
- 2 Bonding layer
- 3 Thickness control pad
- 4 Steel frame structure
- 5 PU Foam
- 6 Insulation layer - ABS sheet





Anti slip



10 year guarantee\*



Flexible installation

Square



Square shower trays

Length	Width	Anti-bacterial	Anti-bacterial & anti-slip	Anti-bacterial & slate effect	Panel Pack
70	70	Z1158	Z1158A	Z1158G	H
76	76	Z1159	Z1159A	Z1159G	H
80	80	Z1160	Z1160A	Z1160G	H
90	90	Z1161	Z1161A	Z1161G	H
100	100	Z1162	Z1162A	Z1162G	I

Exclude wastes.

Walk-In



Walk-In shower trays

Length	Width	Anti-bacterial	Anti-bacterial & anti-slip	Anti-bacterial & slate effect	Panel Pack
140	90	Z1186	Z1186A	Z1186G	B
160	80	Z1187	Z1187A	Z1187G	B
170	80	Z1188	Z1188A	Z1188G	B

Exclude wastes.



Patented reinforcement



Anti bacterial



Vortex wastes

Offset Quadrant



Left handed trays



Right handed trays

Offset Quadrant shower trays

Length	Width	Handed	Anti-bacterial	Anti-bacterial & anti-slip	Anti-bacterial & slate effect	Panel Pack
90	76	Left	Z1195	Z1195A	Z1195G	J
90	76	Right	Z1196	Z1196A	Z1196G	J
90	80	Left	Z1197	Z1197A	Z1197G	J
90	80	Right	Z1198	Z1198A	Z1198G	J
100	80	Left	Z1199	Z1199A	Z1199G	E
100	80	Right	Z1200	Z1200A	Z1200G	E
120	80	Left	Z1201	Z1201A	Z1201G	E
120	80	Right	Z1202	Z1202A	Z1202G	E
120	90	Left	Z1203	Z1203A	Z1203G	E
120	90	Right	Z1204	Z1204A	Z1204G	E

Exclude wastes.

Quadrant



Quadrant shower trays

Length	Width	Anti-bacterial	Anti-bacterial & anti-slip	Anti-bacterial & slate effect	Panel Pack
80	80	Z1192	Z1192A	Z1192G	D
90	90	Z1193	Z1193A	Z1193G	D
100	100	Z1194	Z1194A	Z1194G	G

Exclude wastes.





Anti slip



10 year guarantee\*



Flexible installation

Rectangle



Rectangle shower trays (with corner waste)

Length	Width	Anti-bacterial	Anti-bacterial & anti-slip	Anti-bacterial & slate effect	Panel Pack
90	76	Z1163	Z1163A	Z1163G	H
90	80	Z1164	Z1164A	Z1164G	H
100	70	Z1165	Z1165A	Z1165G	A
100	76	Z1166	Z1166A	Z1166G	A
100	80	Z1167	Z1167A	Z1167G	A
100	90	Z1168	Z1168A	Z1168G	A
110	70	Z1169	Z1169A	Z1169G	B
110	76	Z1170	Z1170A	Z1170G	B
110	80	Z1171	Z1171A	Z1171G	B
110	90	Z1172	Z1172A	Z1172G	B
120	70	Z1173	Z1173A	Z1173G	B
120	76	Z1174	Z1174A	Z1174G	B

Exclude wastes.



Rectangle shower trays (with off-centre waste)

Length	Width	Anti-bacterial	Anti-bacterial & anti-slip	Anti-bacterial & slate effect	Panel Pack
120	80	Z1175	Z1175A	Z1175G	B
120	90	Z1176	Z1176A	Z1176G	B
120	100	Z1230	Z1230A	Z1230G	B
140	80	Z1177	Z1177A	Z1177G	B
140	90	Z1178	Z1178A	Z1178G	B

Exclude wastes.



Patented reinforcement



Anti bacterial



Vortex wastes

Large Rectangle



Large Rectangle shower trays (with off-centre waste)

Length	Width	Anti-bacterial	Anti-bacterial & anti-slip	Anti-bacterial & slate effect	Panel Pack
150	70	Z1179	Z1179A	Z1179G	B
150	76	Z1180	Z1180A	Z1180G	B
150	80	Z1181	Z1181A	Z1181G	B
150	90	Z1361	Z1361A	Z1361G	B
160	70	Z1182	Z1182A	Z1182G	B
160	80	Z1231	Z1231A	Z1231G	B
160	90	Z1232	Z1232A	Z1232G	B
170	70	Z1183	Z1183A	Z1183G	B
170	76	Z1184	Z1184A	Z1184G	B
170	80	Z1185	Z1185A	Z1185G	B
170	90	Z1341	Z1341A	Z1341G	B
170	100	Z1342	Z1342A	Z1342G	B
180	80	Z1343	Z1343A	Z1343G	No panel pack available
180	90	Z1245	Z1245A	Z1245G	No panel pack available
180	100	Z1344	Z1344A	Z1344G	No panel pack available

Exclude wastes.



Large Rectangle shower trays (with two wastes)

Length	Width	Anti-bacterial	Anti-bacterial & anti-slip	Anti-bacterial & slate effect	Panel Pack
200	80	Z1345	Z1345A	Z1345G	No panel pack available
200	90	Z1346	Z1346A	Z1346G	No panel pack available
200	100	Z1347	Z1347A	Z1347G	No panel pack available

Exclude wastes (require 2).



Anti slip



10 year guarantee\*



Flexible installation

Pentangle



Pentangle shower trays

Length	Width	Anti-bacterial	Anti-bacterial & anti-slip	Anti-bacterial & slate effect	Panel Pack
90	90	Z1191	Z1191A	Z1191G	C
100	100	Z1246	Z1246A	Z1246G	C

Exclude wastes.

Offset Pentangle



Left handed trays



Right handed trays

Offset Pentangle shower trays

Length	Width	Handed	Anti-bacterial	Anti-bacterial & anti-slip	Anti-bacterial & slate effect	Panel Pack
120	90	Left	Z1403	Z1403A	Z1403G	K
120	90	Right	Z1404	Z1404A	Z1404G	K
140	90	Left	Z1401	Z1401A	Z1401G	K
140	90	Right	Z1402	Z1402A	Z1402G	K

Exclude wastes.



Patented reinforcement



Anti bacterial



Vortex wastes

Wastes



High flow vortex shower waste  
Chrome  
D: 130, W: 115, H: 110  
Z1205



High flow vortex shower waste  
Slate effect  
D: 130, W: 115, H: 110  
Z1205G

Panel Packs



Shower tray panel packs  
Includes acrylic fascia panel and legs. Choose your panel pack, see trays for reference.

	Acrylic	Slate
A	ZP1.ZL1	ZP1G.ZL1
B	ZP2.ZL2	ZP2G.ZL2
C	ZP3.ZL4	ZP3G.ZL4
D	ZP4.ZL4	ZP4G.ZL4
E	ZP5.ZL3	ZP5G.ZL3
G	ZP4.ZL5	ZP4G.ZL5
H	ZP1.ZL4	ZP1G.ZL4
I	ZP1.ZL2	ZP1G.ZL2
J	ZP5.ZL4	ZP5G.ZL4
K	ZP12.ZL1	ZP12G.ZL1

Sealing Strips



Waterproof sealing strip  
Our unique - 'easyseal' water sealing strip - takes minutes to install. All trays should be installed with a sealing mechanism - to prevent water seeping between the tray and the wall. This is especially true in bathrooms with wooden floors - where floor movement is far more likely. Supplied in a generous 4.1 metre length – the strip is cut to size when sealing the shower tray.  
D: 100, W: 100, H: 30  
Code: Z1208





brittonbathrooms.com  
info@bathroombrands.com  
Tel +44(0)1322 473222

Join us on social:  
[facebook.com/brittonbathrooms](https://facebook.com/brittonbathrooms)  
[twitter.com/brittonbathrooms](https://twitter.com/brittonbathrooms)  
[pinterest.com/brittonbaths](https://pinterest.com/brittonbaths)

