

SAVOIR

EXTRAORDINARY BEDS

CONTENTS

PROLOGUE	5
CHAPTER ONE	
The power of sleep	7
CHAPTER TWO	
What it takes	13
CHAPTER THREE	
Matters of style	45
CHAPTER FOUR	
The fitting	51
CHAPTER FIVE	
At home with Savoir	55
EPILOGUE	59
APPENDICES	61
GLOSSARY	69

S A V O Y



Telephone No. 5830.

Telegraphic Address: "SAVOY HOTEL, LONDON."

THE SAVOY HOTEL AND RESTAURANT,

Victoria Embankment, LONDON.

"THE HOTEL DE LUXE OF THE WORLD."

Containing 250 Apartments, 60 Private Sitting Rooms and 67 Bath Rooms. Shaded Electric Lights everywhere, and no Gas used. The Finest River and Garden View in London, giving a Panorama of the Thames from Westminster to London Bridge.

Luxurious Suites on every floor, with private Bath Rooms, &c. No charge for Baths, Lights or Attendance. Large "Ascending Rooms" running all night. Top Floor Rooms equal in every respect to the Lowest. Large Central Courtyard with Fountain, Plants, Flowers, &c.

THE SAVOY HOTEL
AND
RESTAURANT.



THE SAVOY HOTEL
AND
RESTAURANT.

THE SAVOY RESTAURANT.

The Finest and only Open Air Restaurant in London.

In the GRAND RESTAURANT Breakfasts, Déjeuners Fourchette (Lunch) and Dinners are served *à la carte*, either in the Rooms or on the wide Terrace Balcony (overlooking the Thames), which is enclosed with glass and warmed in cold weather, but open in warm weather.

Savoy Luncheon, served on the Terrace, 4s.

There are several Private Dining and Reception Rooms with wide Terrace Balconies, specially adapted for Private Parties, Wedding Breakfasts, Receptions and "At Homes." Guests may engage tables in advance by wire or letter.

The Cuisine and Cellars rival the most famous Continental and American Restaurants.

In the *SALLE A MANGER*, Breakfasts, Luncheons, and Dinners are served at Separate Tables at the following *à la carte* prices, viz.:-

Breakfast (Plain)	2	d.
Dinner (with meat or fish, etc.)	3	0
Savoy Dinner, at separate tables	4	6

Dinners served in private dining rooms from 10s. 6d. per head, for not less than four persons. Tables may be engaged beforehand at the reception office.

THE BALL ROOM.

Beautifully decorated and admirably adapted for wedding breakfasts, public, regimental and masonic banquets.

Chef de Cuisine, M. ESCOFFIER, from the Grand Hotel, Monte Carlo.

Acting Manager, L. ECHENARD, from the Midland Grand Hotel, London.

General Manager, C. RITZ, Proprietor Hotel Minerva, Baden-Baden, and Provence, Cannes.





PROLOGUE

The world's finest beds for the world's finest hotel

Our story begins more than a century ago, and our hero is a man with a vision: Richard D'Oyly Carte. When in 1889 the famous impresario opened The Savoy Hotel in London, he unveiled the most innovative and glamorous place that anyone could hope to lay their head. In his quest for the best he had secured the services of César Ritz and Auguste Escoffier, the world's leading hotel manager and chef respectively. No creature comfort had been spared: guests, including royalty, marvelled at the en suite bathrooms with hot and cold running water, the electric lighting and the 'luxurious ascending rooms' – now more commonly known as lifts.

During a refit in 1905, it was felt that no bed on the market met the hotel's legendary standards of excellence, so the prestigious upholsterer James Edwards Ltd was specially commissioned to create The Savoy Bed. This luxurious model, slumbered on by the rich and famous down the decades, is still made today as the Savoir No 2 bed, featuring the trademark Trellis ticking designed by Lady D'Oyly Carte herself.

To ensure exclusivity, the Savoy Group bought the bedworks in the 1930s. It did not change hands again until 1997, when Savoir Beds was born, preserving the company's extraordinary heritage and skills for future connoisseurs of comfort.

After a £200 million refurbishment, The Savoy reopened in 2010, boasting a Savoir bed in all its best rooms – and with our incomparably sumptuous No 1 bed taking pride of place in the Royal Suite.



CHAPTER ONE

The power of sleep



A great night's sleep provides the physical and mental refreshment a busy lifestyle requires

If there were an immediate, entirely pleasurable way to improve your well-being – no work, exercise or change of diet required – wouldn't you take advantage of it?

The quality of your bed dictates the quality of your sleep and, by extension, that of your waking hours. To get up every day feeling refreshed and recharged, you need a bed that supports your particular body the right amount in the right places. Without correct support, muscles tire and your REM sleep – the most restorative, mood-enhancing part of your sleep cycle – is disrupted as you toss and turn to relieve pressure points.

Lady D'Oyly Carte, who helped her husband realise his vision for The Savoy Hotel, believed so strongly in the health benefits of a good night's sleep that a new class of bed came into being. Modern mechanisation cannot begin to match the traditional skills that produced it, which is why we at Savoir Beds continue to craft by hand, using the finest natural ingredients for today's discerning clients.

In our hectic, high-tech world, personal comfort is a natural and achievable aspiration. We indulge in cars, home cinemas and holidays; so the bed in which we spend a third of our life is a logical, if often overlooked, investment – especially when it costs less than the price of your morning latte and pays daily dividends.

But it's not just about common sense: it's about you. The relaxation Savoir provides is all the more pleasurable for being personalised. Each of our beds is a bespoke creation, hand-crafted from highest-quality natural materials to the exact size, shape, tension and finish requested.



Spend a third of your life in first class

Providing the best-possible night's sleep was of paramount importance to The Savoy's founders, and for over 100 years luminaries as diverse as Sir Winston Churchill, Giacomo Puccini and Marilyn Monroe have experienced the cloud-like comfort of our beds. Now it's your turn. Treat yourself to a Savoir bed and every night will feel like a night at The Savoy.



SAVOY 01



CHAPTER TWO

What it takes



‘It’s worth all
the effort when
customers write
to thank us for the
best night’s sleep
they’ve ever had’

Arjoon, London works foreman

Think of a factory – then think again. Calm, light and airy, the Savoir bedworks in west London and Wales defy the archetype. In place of hulking machines there are highly skilled craftsmen working intently at individual oak trestles; instead of the addling clatter of a production line you hear the soothing tapping of tacks, music from a radio and the occasional amiable exchange between colleagues.

Arjoon, the London works foreman, has been making beds by hand since 1987. One of the three original Savoy craftsmen inherited by Savoir in 1997, he has trained most of the current team of 40. Standards are so high that it takes at least a year to teach an apprentice the techniques necessary for making a Savoir bed base – two years if you include mattresses and headboards. Our four core models, numbered 1 to 4 and shown over the following pages, vary according to the hours of work and materials involved. All are entirely handmade to clients’ specifications.

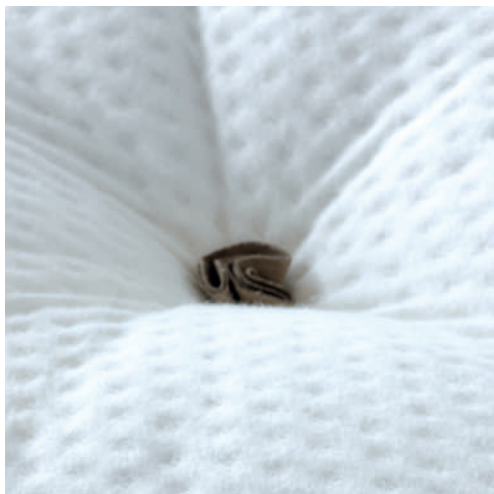
The mission of the whole team – including Rodica the precision cutter and our five meticulous seamstresses – is to provide each customer with the most comfortable and stylish bed imaginable. The solution will depend on body shape, personal preference and budget. From the zoning of different gauges of pocketed spring for optimal support to an unlimited choice of contemporary furnishing fabrics, every individual and taste is provided for. Like Savile Row tailors, our craftsmen only start work once an order has been placed.

We know from firsthand experience that our customers are looking for truly personal service. At Savoir the phrase is no mere cliché. Imagine the luxury of your own bedmaker, who will create your bed from the floor up and – when he is completely satisfied that it is perfect – sign his name with pride, like an artist, on the label...

If every Savoir creation is a work of art, our No 1 bed is nothing short of a masterpiece



HUGO 01



The name says it all: Savoir No 1 takes the art of fine bed-making to undreamed-of levels of comfort and luxury. With taller springs and lavish layers of premium-quality natural fillings for a deeper mattress and base, it is a naturally high bed so sumptuous that customers compare sleeping on it to floating in a cloud. Combining perfectly balanced support with ultimate softness, it is not for everyone – but it is certainly for those who appreciate the very best things in life.



‘You have to be a perfectionist to work here’

Piergiorgio, bed-maker

Our No 1 bed is a celebration of unashamed, no-holds-barred luxury. We put everything we’ve got into it, including more than 80 hours of a master craftsman’s time on the upholstery floor. Add to that the work put in by our cutter, seamstress and joiner and the total time invested is over 120 hours.

The design of this extraordinary piece of furniture draws on over a century of bed-making expertise, along with the latest innovations in the use of natural materials and over five years of careful product development.

Its frame of hardwood beech has several unique features, such as dovetail joints, macassar ebony trim, suede upholstery and a flexible, hand-tied cane edge. The latter, combined with a generous 2” hair roll with two rows of hand-stitching, gives added structure and support to the edge. Meanwhile the mattress – topped with a panel of high-tech stretch cotton fabric – is filled with extra-deep, high-turn pocket springs, masses of loose, curled horse-tail hair and double layers of

carded lambswool. If sheer decadence is on your shopping list, you will appreciate the kilos of pure cashmere we’ve included in the topper.

A high price tag alone does not guarantee a truly luxurious sleeping experience, but at Savoir every detail of the construction counts, from the eight-way hand-cording of base springs to precision tufting and the painstaking hand-slipping of the mattress casing.

Even once the No 1’s enviable assets lie hidden beneath beautiful bedcovers, you will know they’re there – because every night you will feel the difference.



No1



HCa Topper

- › Mountains of hand-teased, curled horse tail, in two layers for optimal performance, with lambswool divide
- › Luxurious outer layer of pure cashmere
- › Natural case of high-tech, 100% cotton stretch fabric and Trellis ticking

Mattress

- › Hand-tied, 7.5-turn pocket springs
- › Masses of hand-laid, long, loose horse tail, with cotton and wool
- › Hand-slipped piped closure and hand-side-stitching
- › High-tech natural stretch fabric top

Box Spring

- › Hardwood beech frame, with traditional dovetail joints
- › Independent 9"/22.5cm hourglass springs
- › Hand-tied, eight-way star-lashed interlinking
- › Traditional hand-tied cane edge with 2"/5cm stitched hair roll
- › Hand-teased loose hair and cotton top filling

Skilled production hours: 120+

First made in 1905, the Savoir No 2 is the original, iconic Savoy bed



LEO 01



Commissioned for The Savoy Hotel over a century ago and handcrafted in London to this day, our No 2 bed exemplifies Savoir's defining characteristics: heritage, bespoke production and quality. Its comfort and durability are the stuff of legend, and its styling options infinite. Which is why it takes at least 80 hours to create; and why the late King Hassan of Morocco – who travelled with his own bed until it was damaged and he was obliged to make do with a Savoir No 2 – ordered 20 for his palace...



‘Every bed I make is different and my own creation. I like to think of someone in particular out there enjoying the fruits of my hard work’

TJ, bed-maker

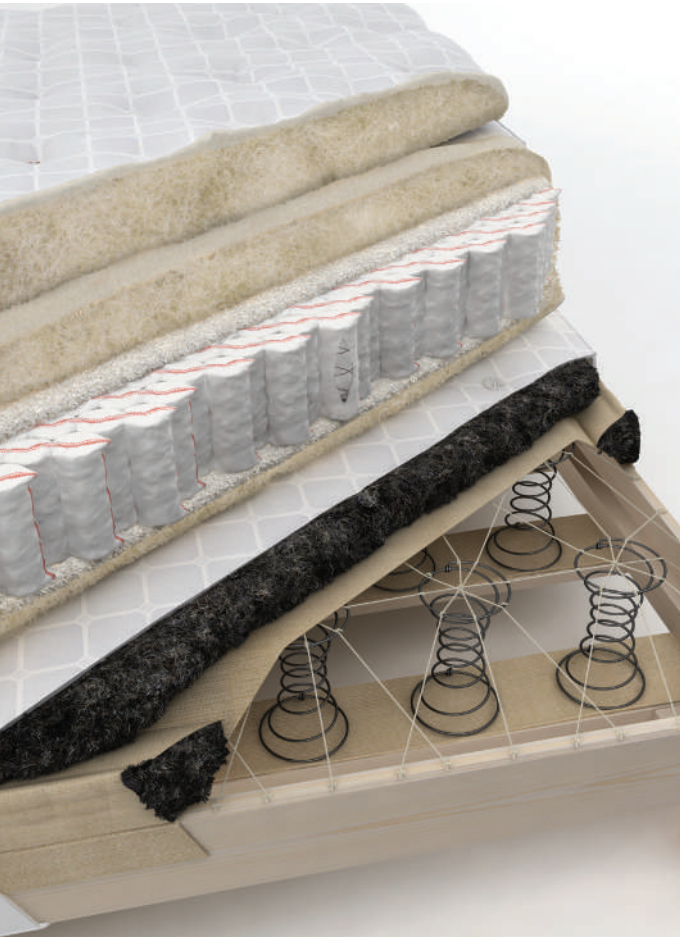
Perhaps you long for a mattress that offers different support for you and your partner, or zoned spring tension for different areas of your body to ensure your spine is properly aligned at night. Maybe you require drawers, or need a bed to fit an existing frame or a tapered space in a superyacht. Whatever the brief, our No 2 bed can be tailored to fit you and your life as perfectly as a made-to-measure suit. Johnny, one of the craftsmen at our London works, recently created a round version of this classic bed for a famous singer: ‘It was satisfying,’ he recalls, ‘but a real challenge to get a smooth hair roll around the edge of the base because of the curve.’

The construction of the sumptuous No 2 is similar to that of the No 1 – complete with double-stitched 3” hair roll on the base – though in this case the frame is of Grade 1 pine, both screwed and glued for durability, with slightly shallower hourglass springs. Our Trellis ticking, designed in 1905 by Lady D’Oyly Carte, is always cut so precisely that the jacquard pattern repeat is exactly symmetrical.

Our uniquely skilled bed-makers bring a degree of pride and rigour to their work that is all too rare in this age of mass production. One of their most difficult tasks, star-lashing, involves hand-tying the base springs to each other and to the frame at exactly the right tension in a radial pattern. This technique – using a traditional oiled-flax cord endorsed by archers at the Battle of Agincourt – is not only extremely strong but also allows each spring to move as independently as possible. The slightest error in tension and the shape and comfort of the bed would be compromised. At Savoir, accuracy is all.



No2



HW Topper

- › Core of long, loose, hand-teased horse tail
- › Soft lambswool outer layer
- › Natural case made up in our trademark Trellis ticking

Mattress

- › Hand-tied, 7.5-turn pocket springs
- › Masses of hand-laid, long, loose horse tail, with cotton and wool
- › Hand-slipped piped closure and hand-side-stitching

Box Spring

- › Grade 1 pine frame, screwed and glued
- › Independent 8"/20cm hourglass springs
- › Hand-tied, eight-way star-lashed interlinking
- › 3"/7.5cm stitched hair roll edge
- › Hand-teased loose hair top filling

Skilled production hours: 80+

Undeniably luxurious, the Savoir
No 3 bed offers exceptional
support and comfort



SOHO 01



More than a week of skilled production time goes into creating our No 3 bed at our Welsh bedworks. Made to measure and hand-built to last, with an independently sprung, star-lashed base and dreamily deep mattress, it is a prime example of the quality for which we are famed. From bespoke design to expert execution, nothing has been left to chance in our pursuit of your nightly comfort.



‘The proudest moment is when you sign the label on the bed you have made’

Mark, Cardiff works foreman

When we purchased an established bedworks in Cardiff in 2005, it was with the aim of enabling a wider clientele to enjoy Savoir’s peerless quality.

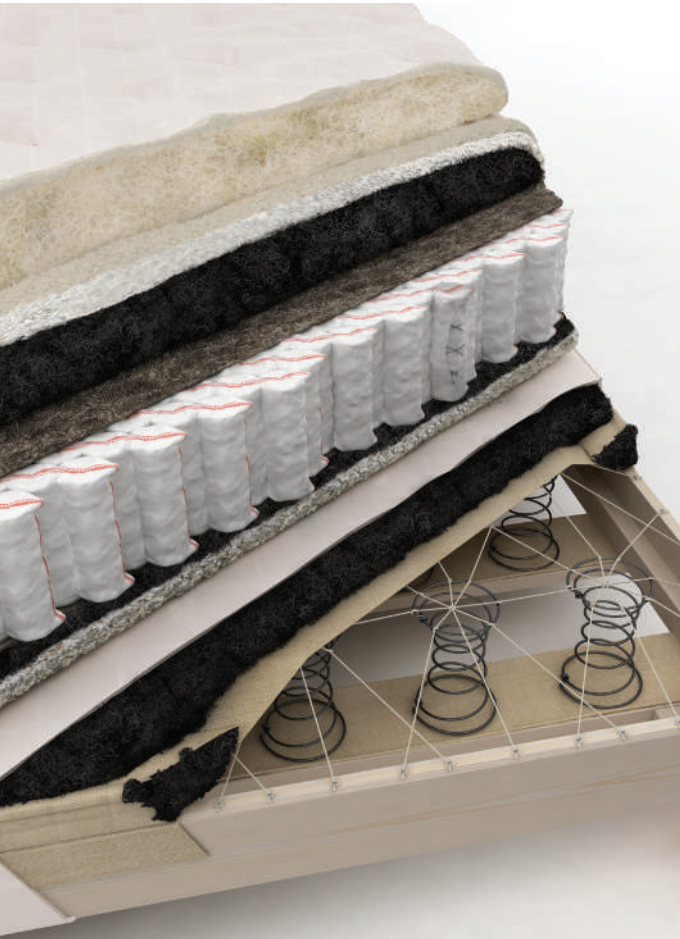
Some of the companionable, 30-strong team have worked in the bed industry for more than two decades, and all derive daily pleasure from producing work of the highest calibre. ‘For the end result to be perfect, every single detail has to be,’ says Jonathan. ‘From the distance between stitches and positioning of tufts to the weight of the hair, everything is checked and double-checked. If the box were even a quarter of an inch out, the case wouldn’t fit well.’

Just as in our London workshop, our No 3 beds are individually bench-made to order. The base of this model – like that of Nos 1 and 2 – boasts a hair roll, a little narrower but still carefully stuffed and stitched by hand. This is the finest-possible type of edge, providing spring and preventing the unpleasant sagging effect associated with many other brands of bed.

At Savoir we are verging on evangelical in our belief that your bed should be made only of materials that allow the best possible sleep. The No 3 mattress is packed with premium natural fillings – which we weigh before hand-laying – to cushion your curves and control heat and moisture during the night, leaving you warm in winter and cool in summer. These are complemented by contour-hugging pocket springs providing essential support.



No3



HW Topper

- › Core of long, loose, hand-teased horse tail
- › Soft lambswool outer layer
- › Natural case made up in our trademark Trellis ticking

Mattress

- › Hand-tied, 6-turn pocket springs
- › Hand-laid loose tail hair, hair pad and layers of cotton and wool
- › Tape edge and hand-side-stitching

Box Spring

- › Grade 1 pine frame, screwed and glued
- › Independent 7"/17.5cm hourglass springs
- › Hand-tied, eight-way star-lashed interlinking
- › 2"/5cm stitched hair roll edge
- › Hand-teased loose hair top filling

Skilled production hours: 50+

Originally created for top hotels, the Savoir No 4 bed promises a five-star experience in your own home



HARLECH 01



When you lie down on a Savoir No 4 bed and close your eyes, it's easy to imagine you are relaxing in a top hotel. After all, it was for precisely such establishments that this bed was designed. Our brief was to set new standards of comfort and longevity: the result, which takes several days to produce, speaks for itself. As our Welsh works foreman Mark puts it, 'This job is about making a work of art – one that's special and lasting.'



‘Time flies when you’re making a Savoir bed because you get so involved in the process’

Piergiorgio, bed-maker

You know when you have sampled a great wine, and the same goes for a well-constructed bed. There is no such thing as a basic model at Savoir: the same passion, skill and perfectionism go into making the No 4 as the No 1. It’s simply a question of how you take your luxury.

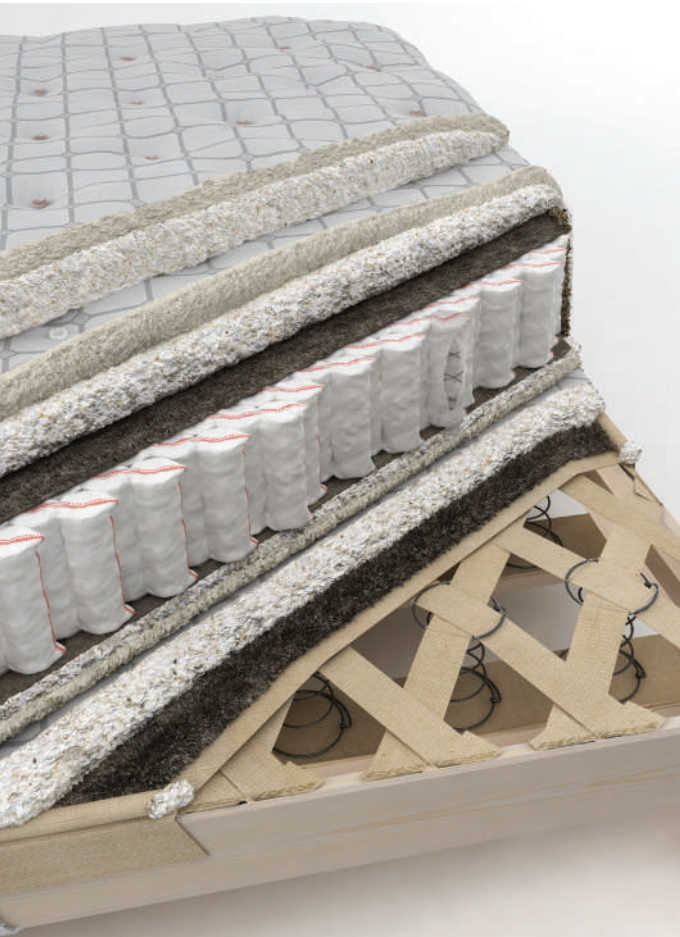
Now available to private clients worldwide as well as exclusive hotels, the No 4 bed is painstakingly crafted at our workshop in Wales from top-quality natural materials. Within the solidly constructed Grade 1 pine base, hourglass springs providing heavy-duty suspension are securely linked with diamond-threaded, hand-stitched hessian webbing. This demanding process provides for independent movement of the springs but is less labour-intensive than hand-tying with cord.

In the mattress, nested pocket springs are sandwiched between generous layers of lambswool, needled cotton and curled hair; hand-tufting keeps the contents in position. Our signature cotton jacquard Trellis ticking, stitched to the springs and fillings at the side by hand, brings the external aesthetics in line with the internal quality of the bed.

If you are planning to buy a large bed, you may wish to consider one that comprises two smaller beds, linked by a zip on the mattress and a link bar on the base. This option not only makes installation and mattress-turning much easier, it also means your sleep is less likely to be disturbed by your partner’s movements. An exclusive Savoir extra is our ‘snake’, an upholstered hair pad that lies flat over the join between two zipped mattresses for a more seamless feel. Add one of our sumptuous toppers and your comfort is complete.



No4



CW Topper

- › Core comprising generous layers of plush cotton
- › Soft lambswool outer layer
- › Natural case made up in our trademark Trellis ticking

Mattress

- › Hand-tied, 6-turn pocket springs
- › Hair pad, with layers of cotton and wool
- › Tape edge and hand-side-stitching

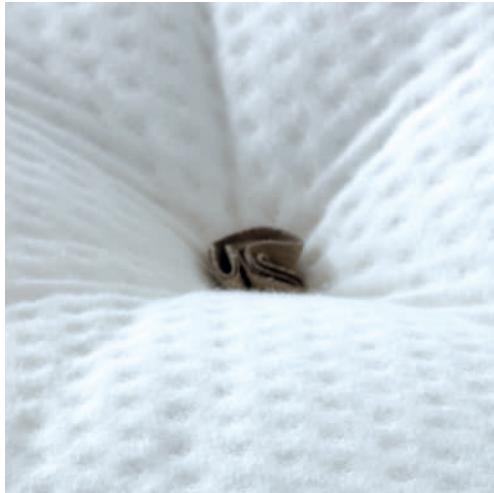
Box Spring

- › Grade 1 pine frame, screwed and glued
- › Independent 6"/15cm hourglass springs
- › Webbed interlinking, hand-stitched to springs
- › Needed-hair insulating pad and cotton top filling

Skilled production hours: 30+

A Savoir topper is the ultimate comfort layer – for the ultimate sleep





A Savoir topper, plump with the softest natural fillings, is the finishing touch to any of our beds, raising the comfort level even higher for the full Princess on the Pea effect (minus the pea, obviously). The glorious sensation of floating, weightless, must be experienced to be believed.

Fairy-tale heights of luxury aside, our toppers provide many other benefits. One of the most important of these is a better sleeping position with the feet slightly elevated: this aids blood circulation, which in turn improves the quality of your sleep.



‘Rolling out and smoothing the cashmere is always the part I look forward to’

Alex, bed-maker

We offer three models of topper, each with different properties, which can be used on any of the Savoir beds. All are made entirely from natural materials, with outer layers of wool (either cashmere or lambs’) that help to manage moisture and regulate your temperature as you sleep. Unlike other manufacturers, we do not machine-quilt our toppers. Instead, they are expertly hand-tufted – a beautiful detail that enables the full benefit of our fillings’ exceptional depth and softness to be felt without allowing them to shift unduly.

Top of the toppers is our HCa option. This decadently sumptuous creation incorporates deep outer layers of pure cashmere wool, which encase two layers of premium curled horse tail around a lambswool core. The top and bottom panels of the case are made of the same cotton stretch fabric used on our No 1 mattress, to ensure that you really feel the luxury of the pure cashmere. This lavish topper is typically supplied with the No 1 bed, but can, of course, grace other models.

The HW is Savoir’s original topper. Mountains of long, loose, hand-teased horse tail are wrapped in soft lambswool and tufted into our trademark Trellis ticking, with predictably gorgeous results. This version can comfortably accompany any of our bed sets but is most often made to complement the No 2 or No 3.

With an inner layer of loose cotton sandwiched between generous layers of top-quality lambswool, the CW topper has a firmer feel. It generally partners the No 4 bed, but as ever you are free to choose an alternative.



CHAPTER THREE

Matters of style



Whatever your style,
we can create something that looks as
elegant, luxurious and unique as it feels



STATE 01

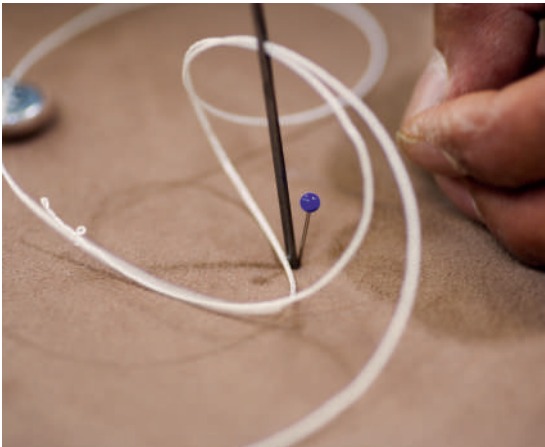


CLAUDIA 04



HARLECH 09

Your bed is the most important piece of furniture in your house; beautifully designed, it can bring as much pleasure to your days as to your nights. Because every Savoir bed is customised, there is no end to the styling possibilities. From the shape and fabric of the headboard and box spring base to the height and style of the legs, we can tailor every detail to produce something utterly wonderful – and utterly you.



‘My favourite job is making the headboard: it’s the first thing people notice. I love a challenge and there’s so much variety’

Johnny, box and headboard team leader

As you have seen, Savoir beds are so beautifully made it’s almost a shame to cover them up. Like luxurious bedlinen, however, the styling of our simply chic headboards, frames and upholstered bases proclaims the superlative quality of what lies beneath. It is also a chance to express your individual taste. Faux or real leather or suede; velvet, silk or linen; bold patterns or a colour block... whether you choose from our extensive stock of furnishing fabrics or provide us with your own, we will handcraft a stunning visual centrepiece for your bedroom.

Our collection of contemporary headboards and frames includes elegant detailing options such as piping, stitchwork, buttons and panels. No two Savoir beds are the same, and we embrace the challenge of creating something totally original.

Savoir style begins right down at floor level. Old-fashioned divans can look boxy and heavy, but when you raise a base off the floor, the bed appears to float, making the room feel more airy and welcoming. Our range of legs includes minimalist hardwood blocks, chrome tripods and a hand-carved sabre-style design, as well as the world’s most robust castors. Alternatively you can design your own, or ask us to reproduce an antique shape such as the classic ball-and-claw.

We understand that the look of your bed is as integral to the Savoir experience as the feel – and equally subjective. Once we made a headboard from an aeroplane wing, which goes to prove that the sky’s the limit.



CHAPTER FOUR

The fitting

‘It’s a lifestyle choice:
if you sleep better,
you live better.
The right bed can
transform your life’

James Harper, showroom manager

Head to the tranquil environment of one of our showrooms, preferably in loose clothing and relaxed mood, and discover for yourself the bliss of a Savoir bed. Body shapes, individual support requirements and personal tastes all vary, so it is important that you test out our different models in person.

Our experienced consultant will explain all the structure and style options and assess your requirements, even analysing how your particular body responds to different tensions in various positions, so that you can make an informed decision. He or she may also point out some popular misconceptions, such as the ‘fact’ that a firm bed is always good for the back (this depends on your body mass: for your spine to be correctly supported you need to sink into the mattress). It helps if you can identify what you like and dislike about your current bed.

Your visit will also be a chance to see and even feel exactly what goes into our beds. We always display a full-scale cross-section of a mattress and base, along with samples of our tactile, high-quality fillings.

We look forward to advising you, but please forgive us if your old bed never feels quite the same again.



CHAPTER FIVE

At home with Savoir



SAVOIR BEDS
SINCE 1905

SAVOIR BEDS
SINCE 1905

The finest bespoke beds

TEL: 01273 496 2222

www.savoirbeds.co.uk

WR07 ZGK

10

LC08 D

Signed, sealed and delivered right to your bedroom

Our excellent service does not end the moment your bed is completed. It is central to our ethos, and we are not content until your bed is safely in your bedroom ready for use.

We will arrange a delivery date and time that suits you (we may have already visited your house to assess the space and access available before manufacturing your bed). On the day, our experienced team will install your bed with great care, levelling it if the floor is uneven, and removing your old bed set along with any packaging.

We undertake to remake a No 1 or No 2 bed if you are not completely happy with the tension in the first three months; but we request that you allow a month for your muscle memory to adjust before you judge, especially if your body has been compensating for an unsupportive mattress.

It is normal for the mattress to settle a little as the natural fillings find their place. Your topper will flatten with time and we offer a re-carding service to rejuvenate it should you wish. If you treat your bed with the respect it deserves, taking the time to turn your mattress regularly, you can expect a lifetime of unsurpassed comfort.



EPILOGUE

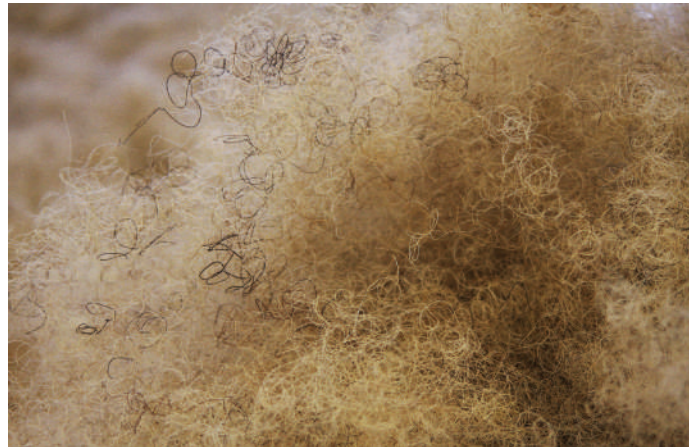
The beginning of the
rest of your life...

A Savoir happy ending is actually a new beginning. Your own bed to come home to every night, built to your own specifications by your own craftsman... crisp linens, downy pillows and the kind of deep sleep that leaves you refreshed and excited about the day ahead... this is the start of an enduring love affair.

From Edwardian innovation to 21st-century excellence, Savoir quality has stood the test of time. There's no great mystery to our continuing success story. We know what matters, we find out precisely what you want, and we get it right. Invest in a Savoir bed and 'Did you sleep well?' is a question no one will ever need to ask you again.



APPENDICES



The tale of a tail: take a closer look at the quality that sets Savoir apart

Horse tail is the undisputed king of upholstery hair. That's horse tail, not horse hair, cattle tail or any other cheaper alternative. Its length makes it the very finest filling available – and we are the only bed company to place it at the heart of most of our mattresses and toppers.

The horse tail of the highest and most consistent quality comes from South America. Steam-cleaned at a very high temperature without chemicals, it is twisted tightly and left for at least three months to acquire permanent curl. At Savoir Beds we take delivery of horse-tail rope coils – each weighing in at 50kg – in massive quantities, as we use more per bed than anyone else.

To prepare the hair for use, we first loosen the rope by attaching it to a spinning hook (the 'de-roper'). A member of our skilled carding team then gently pulls it into smaller sections, taking care not to break our valuable horse hair. The untwisted rope is placed on the conveyor belt of our trusty 1920s carding machine – which still uses leather drive belts and wooden conveyor slats – and taken on a rollercoaster ride through a series of rotating drums with metal combs. When it emerges the other end it is a huge cloud of curly hair.

The length of the tail hair ensures that each strand holds many curls, resulting in a micro-spring unparalleled in terms of bounce and longevity. Literally millions of these springs go into just one bed, generously hand-teased onto the mattress, topper or box spring by our craftsmen to give that fabulous Savoir feel.

This premium filling cushions and supports every contour of your body, but that's not all. Because, like wool, it is naturally hollow, horse tail has a greater surface area to wick away moisture, helping to regulate your temperature for a supremely comfortable night's sleep.



No1



No2



No3



No4

MATTRESS	SAVOIR No 1	SAVOIR No 2	SAVOIR No 3	SAVOIR No 4
Spring	6"/150mm, 2"/50mm diameter	6"/150mm, 2"/50mm diameter	7"/175mm, 2"/50mm diameter	7"/175mm, 2"/50mm diameter
	7.5 Turn	7.5 Turn	6.0 Turn	6.0 Turn
	Steel in 1.219, 1.422 or 1.626mm	Steel in 1.219, 1.422 or 1.626mm	Steel in 1.219, 1.422 or 1.626mm	Steel in 1.219, 1.422 or 1.626mm
	Stitched calico case	Stitched calico case	Stitched calico case	Stitched calico case
	Zoning available within mattress	Zoning available within mattress		
Interlinking	Hand-tied	Hand-tied	Hand-tied	Hand-tied
Edge	Loose horse tail	Loose horse tail	Coir pad	Coir pad
Upholstery	Needled cotton	Needled cotton	Needled cotton	Needled cotton
	Loose horse tail	Loose horse tail	Loose hair and needled hair	Needled hair
	Lambswool	Lambswool	Lambswool	Lambswool
Case	White Trellis: cotton and viscose	Grey Trellis: linen and cotton	Oatmeal Trellis: cotton	Silver Trellis: linen and cotton
	Stretch-cotton sleep panel			
	Piped edge	Piped edge	Taped edge	Taped edge
	Brass vents	Brass vents	Brass vents	Brass vents
	Novasuede flag-stitched handles	Flag-stitched handles	Flag-stitched handles	Flag-stitched handles
Closure	Hand-slipped	Hand-slipped	Tape edge	Tape edge
Side-stitching	Hand-stitched	Hand-stitched	Hand-stitched	Hand-stitched
Tufting	Hand-marked	Hand-marked		
	Cotton tuft with Novasuede washer	Cotton tuft	Cotton tuft	Cotton tuft



No1



No2



No3



No4

BOX SPRING	SAVOIR No 1	SAVOIR No 2	SAVOIR No 3	SAVOIR No 4
Frame	Hardwood – beech	Softwood – Grade 1 pine	Softwood – Grade 1 pine	Softwood – Grade 1 pine
	Dovetail and dowel joints, glued	Screwed and glued	Screwed and glued	Screwed and glued
	Macassar ebony trim			
Insulator	Jute tarpaulin	Jute tarpaulin	Jute tarpaulin	Jute tarpaulin
Base spring	9"/225mm hourglass	8"/200mm hourglass	7"/175mm hourglass	6"/150mm hourglass
	Heat-treated steel	Heat-treated steel	Heat-treated steel	Heat-treated steel
	9-turn, 8-gauge (4.064mm)*	8-turn, 9-gauge (3.658mm)*	7-turn, 9-gauge (3.658mm)*	6 -turn,10-gauge (3.251mm)*
	Oversized top coil			
Interlinking	Star-lashing: 8-way, hand-tied	Star-lashing: 8-way, hand-tied	Star-lashing: 8-way, hand-tied	Cross-webbing: 4-way diagonal
	Laid cord	Laid cord	Laid cord	Stitched hessian webbing
Edge	Sprung hair roll	Hair roll	Hair roll	Cotton roll
	2"/50mm hair-stuffed roll	3"/75mm hair-stuffed roll	2"/50mm hair-stuffed roll	1"/25mm cotton-stuffed roll
	2 rows of hand-side-stitching	2 rows of hand-side-stitching	2 rows of hand-side-stitching	
	Hand-tied cane			
Upholstery	Loose horse tail	Loose tail hair	Loose tail hair	Needled hair
	Cotton			Cotton
Case	White Trellis: cotton and viscose	Grey Trellis: linen and cotton	Oatmeal Trellis: cotton	Silver Trellis: linen and cotton
	Piped and upholstered in Novasuede as standard	Piped	Piped	Piped
Tufting	Wool tuft	Wool tuft	Wool tuft	

*All wire gauges are British Imperial Standard Wire Gauges, not AWG

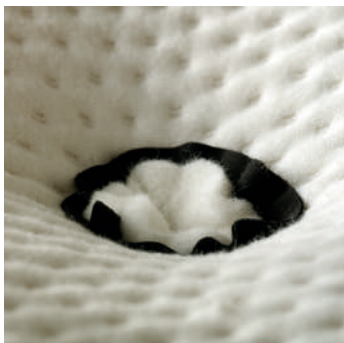


GLOSSARY





No 1 box spring cane edge



No 1 mattress tuft on casing



No 1 ebony trim

Apprentice

Training a bed-maker is a long process and a significant investment, so those entering our apprentice scheme must demonstrate great talent and commitment. Generally our apprentices start with one of the less skilled processes such as **carding**, springing or the initial sanding of our hardwood legs. From there they move on to a trade, be it in the cabinet shop or on the upholstery floor.

Bench-made

All Savoir beds are crafted on oak **trestles** like the ones in our showrooms. Not for us the production line with one person performing a small job then handing over to someone else. Instead, one of our bed-makers starts with a case or **box-spring** frame and takes the project through to completion, signing it when he is happy with the result. This ensures exceptional quality and job satisfaction.

Box spring

Sometimes called a divan, base or foundation, this provides the **mattress** with the best possible support. Our large, independent **hourglass springs** and unrivalled edges take the strain of your weight, enabling the mattress to do its job of taking your shape and giving the right support. This function cannot be fulfilled by the cheaper, relatively small pocket springs or interconnected open coil springs used by other manufacturers.

Unlike a slatted base, the box spring – which incorporates a layer of **hair** – also manages the temperature gradient between your body and the floor, ensuring that moisture moving through the mattress does not form damaging condensation.

Cane edge

For our No 1 bed, lengths of cane are hand-tied to the outermost **hourglass springs** of the base. Combined with a **hair roll** and hardwood frame, this gives the bed the most flexible and durable edge possible.

Carding

The process of combing a rope of **hair** into a cloud of loose curls that can then be hand-**teased** into place.

Cashmere

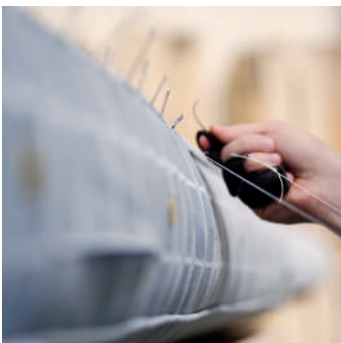
Combed from the neck of Mongolian goats, this most luxurious of wools is used in our HCa **topper**. Unlike other manufacturers, we don't blend it with cheaper fibres or bury it so far down you can't feel it. We place a generous 500g/m² layer directly under a specially developed, naturally stretchy cotton fabric to ensure you benefit from this exquisitely soft filling.

Casing

Apart from the No 1 – which uses a high-tech, stretchy cotton fabric – all our **mattress, box-spring** and **topper** cases are made up in our exclusive, all-natural Trellis **ticking**. The fabric is measured and hand-cut with pinpoint accuracy before being assembled by expert seamstresses; large panels must be cut a little bigger and left overnight before stitching, to allow for shrinkage. All our box-spring casings, as well as those of the No 1 and No 2 mattresses, feature matching **pipings**.



Tacking hessian backing on headboard



Slipping No 2 mattress



Stitching hair roll on No 2 box spring

Cotton pad

A generous pad of naturally soft and fluffy cotton fibre acts as an insulating layer around the **pocket-spring** unit of the mattress.

Dovetail joints

This traditional, labour-intensive way of locking wood together is a beautiful and unbeatably strong feature of our **drawer** boxes and No 1 bed frame.

Drawers

A storage option on all models, available in various configurations, Savoir drawers are built to last. Their oak frame has precise, hand-sawn **dovetail joints** and runs smoothly on heavy-duty steel ball-bearings.

Edge bar

This flat metal bar runs internally around the edge of our **mattresses**, lying deep down just on top of the **pocket-spring** unit. It helps to maintain the shape and size of the mattress, which is liable to become smaller and plumper in transit.

Hair

Every Savoir **mattress** and **box spring** includes curled hair for guaranteed comfort. In the case of the No 1 and No 2 mattresses and HCa and HW **toppers**, this is pure **horse tail**; in other models we use a blend of high-quality animal hair, either loose or, in the case of the No 4, formed into a pad. The various types all have beneficial moisture-wicking and temperature-regulating properties.

Hair roll

Beneath the casing, a stuffed **hessian** roll up to 3"/8cm in diameter runs internally around the edges of our No 1, No 2 and No 3 **box springs**; it is **side-stitched** by hand to square it up into the right shape and to prevent the **hair** filling from shifting. Thanks to this first-class feature – which ensures flexibility without allowing the side to collapse – there is no sensation of rolling out when you lie close to the edge of the bed.

Hessian

A robust jute fabric, with a loose weave that makes it ideal for the stitching required when making a **hair roll**.

Hog ring

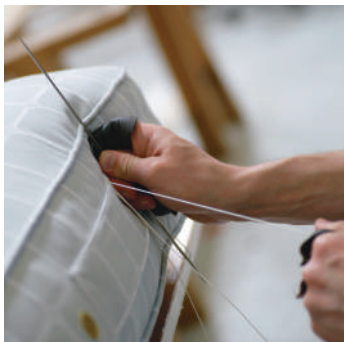
A small metal clip which is closed over a **pocket spring** and the **edge bar** to keep the latter in place.

Horse tail

The nonpareil of upholstery fillings. Its long strands allow it to hold many curls, making it the ultimate natural spring; it also wicks **moisture** away, regulating your temperature to maximise the quality of your sleep. Backed up with steel springs in the **mattress** and **box spring**, it lasts exceptionally well, unlike fillings such as foam or latex.

Hourglass springs

The large (6"/15cm to 9"/23cm high) heat-treated steel springs in our bed bases are designed to take your weight, helping to give great support and protect the **mattress**. For this particular purpose they are far superior to open coil or **pocket springs**, as they are highly durable and can move independently.



Side-stitching No 2 mattress



Signing off



Tufting No 1 mattress

Laid cord

A very strong, flax-based string with a waxed finish which is used to **star-lash** the **hourglass springs** in the **box spring**.

Mattress

The middle layer of the Savoir sleeping system, it sits between the **topper** and **box spring**. Containing **pocket springs** and curled **hair** as well as **cotton** and **wool**, the mattress is designed to support your body, allowing your spine to lie in correct alignment. Our fillings are entirely natural and designed to create the perfect, safe sleeping environment.

Moisture-wicking

Because **hair** is naturally hollow it is supremely well-adapted to drawing moisture away from the body to evaporate. It therefore makes an ideal bed filling, helping to control your temperature and overall comfort.

Piping

A ticking-covered piece of cord, this attractive detail runs around the top edge of every Savoir **box-spring casing** and the Savoir No 1 and No 2 **mattresses**. In the mattresses it allows us to finish the job by hand-**slipping** the piping closed.

Pocket springs

With a small (2"/50mm) diameter and a height of 6"/15cm or 7"/17.5cm, our top-quality steel **mattress** springs have more turns than most for greater durability. They are encased in natural calico cases that enable them to move independently when nested side by side: this allows your hip, for example, to sink in further than your waist, keeping your spine correctly aligned. They also reduce the effects of your partner's movements.

Regulator

A thick needle of around 8"/20cm in length with one sharp end, this can be pushed through the loose weave of the **hessian** to move the mass of **hair** in the **hair roll** to the desired position, ensuring that it is evenly spread.

REM

Rapid Eye Movement describes one of the most important phases of your sleep, the time when you gain most restorative benefit. Temperature regulation is key to maximising REM sleep, and in this respect animal fibres have been shown to provide a superior sleeping surface to other natural fibres and manmade fillings such as foam or polyester wadding.

Rope

Our upholstery **hair** is delivered to us in rope form, which gives it the curl we need to turn in into a springy mass. **Carding** is the process by which we prepare it for use.

Side-stitching

Every Savoir **mattress** is side-stitched, as is the **hair roll** on the **box spring** of the No 1, No 2 and No 3 beds, in order to control the movement of the **hair** filling. On the mattress a double-ended needle about 10"/25cm long is used to link the side of the mattress to the pocket springs. On the box spring, the stitching squares up the hair roll to provide the perfect edge.



Hair rope



Hourglass spring bundles



Tarp and hessian rolls

Slipping

A semi-circular needle about 3"/8cm in diameter is used to hand-slip (invisibly stitch) the No 1 and No 2 mattresses closed by attaching the **piping** to the rest of the case. Each stitch is very small (under 1/4"/5mm), and the technique allows us to close the edge over a far greater quantity of loose **horse tail** than would be possible with a **tape-edge** closure.

Snake

A pad that Savoir provides to cover the join on a **zipped** pair of **mattresses**, this ensures an even sleeping surface.

Star-lashing

This time-consuming method of linking the **hourglass springs** in the **box spring** of the No 1, No 2 and No 3 models demands great skill and gives the **best mattress** support possible. Each spring is hand-tied eight ways to create a star shape, perfectly tensioned to allow for independent vertical – but not lateral – movement.

Stuff-and-stitch

The process by which the **hair roll** on the edge of the **box spring** is created. A tube of **hessian** – **slipped** and **tacked** to the **tarp** spring insulator and the wooden frame respectively – is stuffed with loose **hair** using a wooden pole and a **regulator** needle. The corners are hand-sewn closed using a **slipping** needle and the entire roll is **side-stitched**, resulting in the perfect box-spring edge.

Tacking

The hammering of small (1/4–3/8"/6–10mm), large-headed nails through fabric into the timber frame of a **box spring**, to secure the **hair roll** to the top edges or the **hessian** to the underside.

Tape edge

The form of closure on our No 3 and No 4 mattresses (as opposed to **hand-slipping**, which is used on the No 1 and No 2). A tape-edge machine comprises a large metal table with a track around the edge along which a sewing machine runs, allowing a ribbon of fabric to encase and neatly seal the open seam. The technique is employed by most quality manufacturers but cannot be used on a Savoir No 1 or No 2 mattress due to the quantity of loose **hair** these models contain.

Tarp

Short for tarpaulin, this is a heavy-duty **hessian** laid as an insulator over and under the **hourglass springs** on a Savoir **box spring**. It eliminates the noise of the springs and prevents them from rubbing through the upper fillings.

Teasing

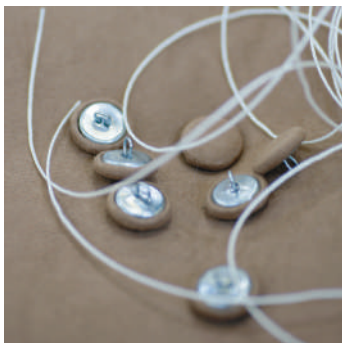
The way a craftsmen skillfully manipulates the loose **hair** by hand, pulling it and combing it with his fingers to ensure it is evenly laid.

Ticking

The beautiful, 100% natural fabric used for our **mattress, topper** and **box-spring cases** is our trademark Trellis design, a jacquard (self-patterned) weave created by Lady D'Oyly Carte in 1905 and used ever since. It comes in four chic colours: White, Oatmeal, Grey and Silver.



Hog rings on pocket-spring unit



Headboard buttons



Stitching twine

Topper

This luxuriously filled **ticking** envelope is the ultimate comfort layer on your Savoir bed set. It is designed to minimise pressure points, regulate temperature and ensure that your feet are slightly raised for improved circulation and sleep quality. We offer three models, the HCa (hair and cashmere wool), HW (hair and wool) and CW (cotton wrapped in wool).

Trestle

All our **mattresses, toppers** and **box springs** are **bench-made**: the trestles are the frames that support them during production. Ours are made of beautiful solid oak, which reflects the pride we take in our work.

Tufting

A technique used to stop loose **hair** and other filling materials moving too much from side to side, so preventing dips in the bed. The method varies but is always done by hand. On the **topper**, beautiful fabric tufts on both surfaces create a petal effect when a stitch pulls them closer together. On the **mattress**, a pre-sized tufting tape links a felt tuft on either surface. The wool tufts on the No 1, No 2 and No 3 **box springs** are only on the top and are secured to the **tarp** lying over the **star-lashed, hourglass springs**. Most manufacturers do not tuft their box springs because they do not use any loose hair in them.

Webbing

An exacting but less time-consuming alternative to **star-lashing**. On our No 4 **box spring**, **hessian** webbing is woven in a diamond pattern through the **hourglass springs** to link them securely to each other and the frame. It is then hand-stitched to the springs wherever it crosses.

Wool

Pure lambswool – or **cashmere** in the case of our No 1 model – forms the uppermost comfort layer in all our mattresses and toppers. It feels wonderfully soft and its **moisture-wicking** properties naturally help to regulate the temperature as you sleep.

Zip-and-link

A optional method of joining two **mattresses** and two **box springs**, with a zip and a link bar respectively, to create one large bed. Having separate mattresses makes turning them easier and reduces movement across the bed; a **topper** and **snake** minimise the feel of the join. Some customers notice no difference – most people sharing a large bed sleep on their own side anyway – while others prefer a one-piece mattress. Due to their rigidity, most large bed **box springs** are split and linked for ease of delivery and installation.



PENELOPE 01

MADE IN ENGLAND AND WALES

For showroom information please visit
www.savoirbeds.com

© Savoir Beds Limited 2015
vol. 3